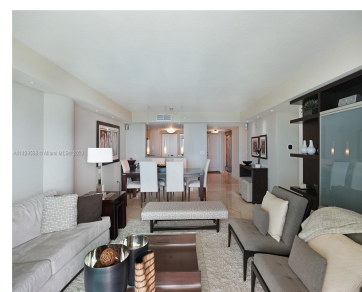
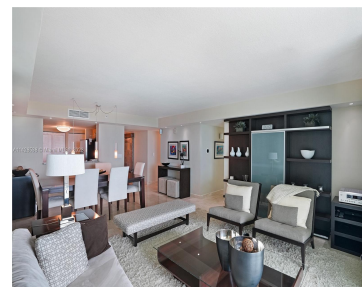


2101 BRICKELL AVE 1812 MIAMI FL 33129

<https://www.cays.com>



Exquisitely 2B 2Ba renovated corner turn-key unit! Beautiful furniture. Breathtaking skyline views of all of Miami and the bay directly from your bedroom. Marble floors throughout. Walk-in closets, blackouts in bedrooms, stainless steel appliances, granite countertops. Includes 2 parking spaces and a storage unit! Resort-style amenities: Marina, BBQ area, gym overlooking the bay, spa, pool [...]

- 2 beds
- 2 baths
- Condominium
- Residential
- Active
- 1367 sq ft

Basics

Bathrooms Full: 2

Category: Residential

Status: Active

Bathrooms: 2 baths

Year built: 2004

Lot Size Units: Square Feet

Type: Condominium

Bedrooms: 2 beds

Area: 1367 sq ft



Property details

Total Building Area: 1367

Subdivision Name: SKYLINE ON BRICKELL CONDO

Parcel Number: 01-41-39-084-3490 **Possession:** Closing & Funding

Property Features

Exterior Features: Balcony

Interior Features: Built-in Features, Bedroom on Main Level, Closet Cabinetry, Living/Dining Room, Pantry, Walk-In Closet(s)

Waterfront Features: Bay Front

Window Features: Blinds, Impact Glass

Pool Features: Association

Parking Features: Two or More Spaces, Valet

Security Features: Secured Garage/Parking, Key Card Entry, Lobby Secured

Appliances: Built-In Oven, Dryer, Dishwasher, Electric Range, Disposal, Microwave, Refrigerator, Washer

Architectural Style: High Rise

Association Amenities: Boat Dock, Marina, Bike Storage, Clubhouse, Community Kitchen, Fitness Center, Barbecue, Picnic Area, Playground, Pool, Sauna, Spa/Hot Tub, Tennis Court(s), Elevator(s)

Construction Materials: Block

Cooling: Central Air

Cooling Y/N: 1

Covered Spaces: 2

Flooring: Marble

Furnished: Furnished

Garage Spaces: 2

Garage Y/N: 1

Heating: Central

Heating Y/N: 1

Pets Allowed: Conditional, Yes

View: Bay, City, Water

View Y/N: 1

Entry Level: 18

Entry Location: 18

Patio and Porch Features: Balcony, Open

Property Attached Y/N: 1

Waterfront Y/N: 1

Stories Total: 35

Rooms & Units Description



Unit Number: 1812

Location Details

County Or Parish:

Miami-Dade County

Directions: Enjoy Brickell to the fullest! Walk to Mary Brickell Village, Brickell City Center, Brickell Key. Best restaurants and cafes. Metromover and Trolley run all over the city for free. Minutes to Key Biscayne and Miami's Downtown.

Fees & Taxes

Tax Annual Amount: 8534

Tax Year: 2022

Tax Legal Description: SKYLINE ON BRICKELL CONDO UNIT 1812 UNDIV 0.36072% INT IN COMMON ELEMENTS OFF REC 22848-4086 COC 22918-0666 12 2004 1

Association Fee: 1678

Association Fee Frequency: Monthly

Association Fee Includes: Association Management, Common Areas, Hot Water, Maintenance Grounds, Maintenance Structure, Sewer, Trash, Water

Miscellaneous

Public Survey Township: 1

Public Survey Section: 39

Syndication Remarks: Exquisitely 2B 2Ba renovated corner turn-key unit! Breathtaking skyline views & the bay. Marble floors. Walk-in closets, blackouts in bedrooms.

Year Built Details:
Resale

Virtual Tour URL: <https://www.youtube.com/watch?v=XDzs-kHQW9g>

Courtesy of

Office Name: Skyline Realty International LLC

