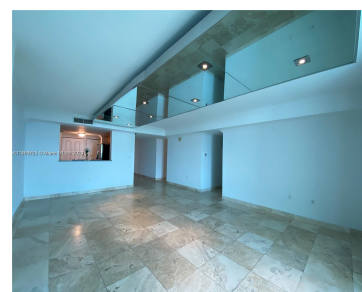
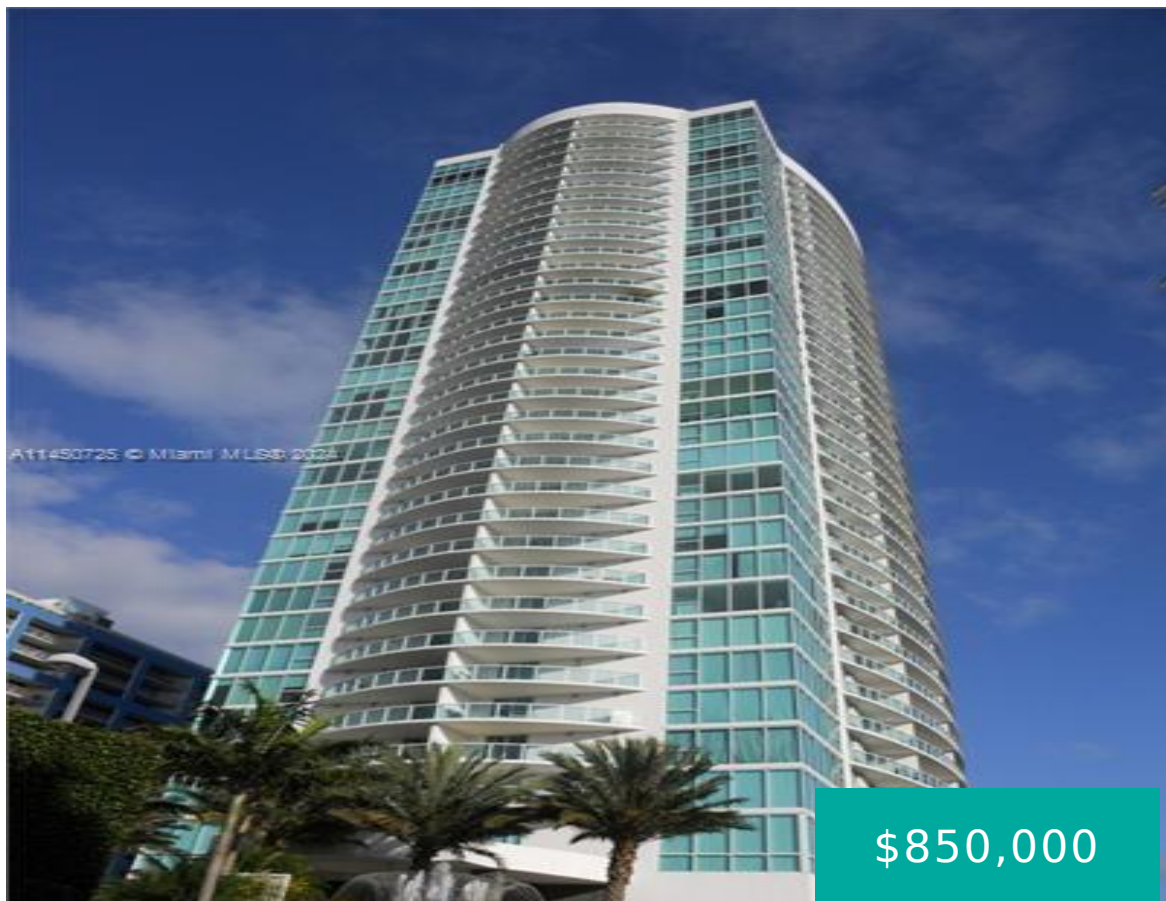


# 2101 BRICKELL AVE 2912 MIAMI FL 33129

<https://www.cays.com>



Beautiful 2 bedroom, 2 bath unit with partial waterview and skyline views from the 29 Floor. Spacious and open floor plan, with marble floors throughout, Stainless Steel appliances, granite counters, very large balcony and washer/dryer in unit. Great building in Brickell Ave with beautiful Lobby area with security guard, tennis court, pool, spa, gym and [...]

- 2 beds
- 2 baths
- Condominium
- Residential
- Active
- 1367 sq ft

## Basics

**Bathrooms Full:** 2

**Category:** Residential

**Status:** Active

**Bathrooms:** 2 baths

**Year built:** 2004

**Lot Size Units:** Square Feet

**Type:** Condominium

**Bedrooms:** 2 beds

**Area:** 1367 sq ft



---

## Property details

**Total Building Area:** 1367

**Subdivision Name:** SKYLINE ON BRICKELL CONDO

**Parcel Number:** 01-41-39-084-3600 **Possession:** Close Of Escrow

---

## Property Features

**Exterior Features:** Balcony

**Waterfront Features:** Ocean Front

**Parking Features:** Assigned,Covered,One Space

**Appliances:** Built-In  
Oven,Dryer,Microwave,Refrigerator,Washer

**Association Amenities:** Marina,Elevator(s),Fitness  
Center,Playground,Pool,Tennis Court(s)

**Cooling:** Central Air,Electric

**Covered Spaces:** 1

**Garage Spaces:** 1

**Heating:** Central,Electric

**Pets Allowed:** Conditional,Yes

**View Y/N:** 1

**Entry Location:** 29

**Property Attached Y/N:** 1

**Stories Total:** 35

**Interior Features:** Bedroom on  
Main Level,Closet Cabinetry,First  
Floor Entry

**Pool Features:** Association

**Security Features:** Lobby  
Secured,Security Guard

**Architectural Style:** High Rise

**Construction Materials:** Block

**Cooling Y/N:** 1

**Flooring:** Tile

**Garage Y/N:** 1

**Heating Y/N:** 1

**View:** City,Ocean

**Entry Level:** 29

**Patio and Porch Features:**  
Balcony,Open

**Waterfront Y/N:** 1

---

## Rooms & Units Description

**Unit Number:** 2912



---

## Location Details

**County Or Parish:** Miami-Dade County

---

## Fees & Taxes

**Tax Annual Amount:** 9918

**Tax Year:** 2022

**Tax Legal Description:**

SKYLINE ON BRICKELL CONDO  
UNIT 2912 UNDIV 0.36072%  
INT IN COMMON ELEMENTS  
OFF REC 22848-4086 COC  
23019-2970 01 2005 1

**Association Fee:** 1731

**Association Fee**

**Frequency:** Monthly

**Association Fee Includes:** Amenities,Maintenance  
Structure,Parking,Pool(s),Sewer,Security,Trash,Water

---

## Miscellaneous

**Public Survey Township:** 1

**Public  
Survey  
Section:** 39

**Syndication Remarks:** water view and skyline view in Miami

**Year Built  
Details:**  
Resale

**Virtual Tour URL:**

<https://www.propertypanorama.com/instaview/mia/A11450725>

---

## Courtesy of

**Office Name:** Florida Brokers Real Estate

