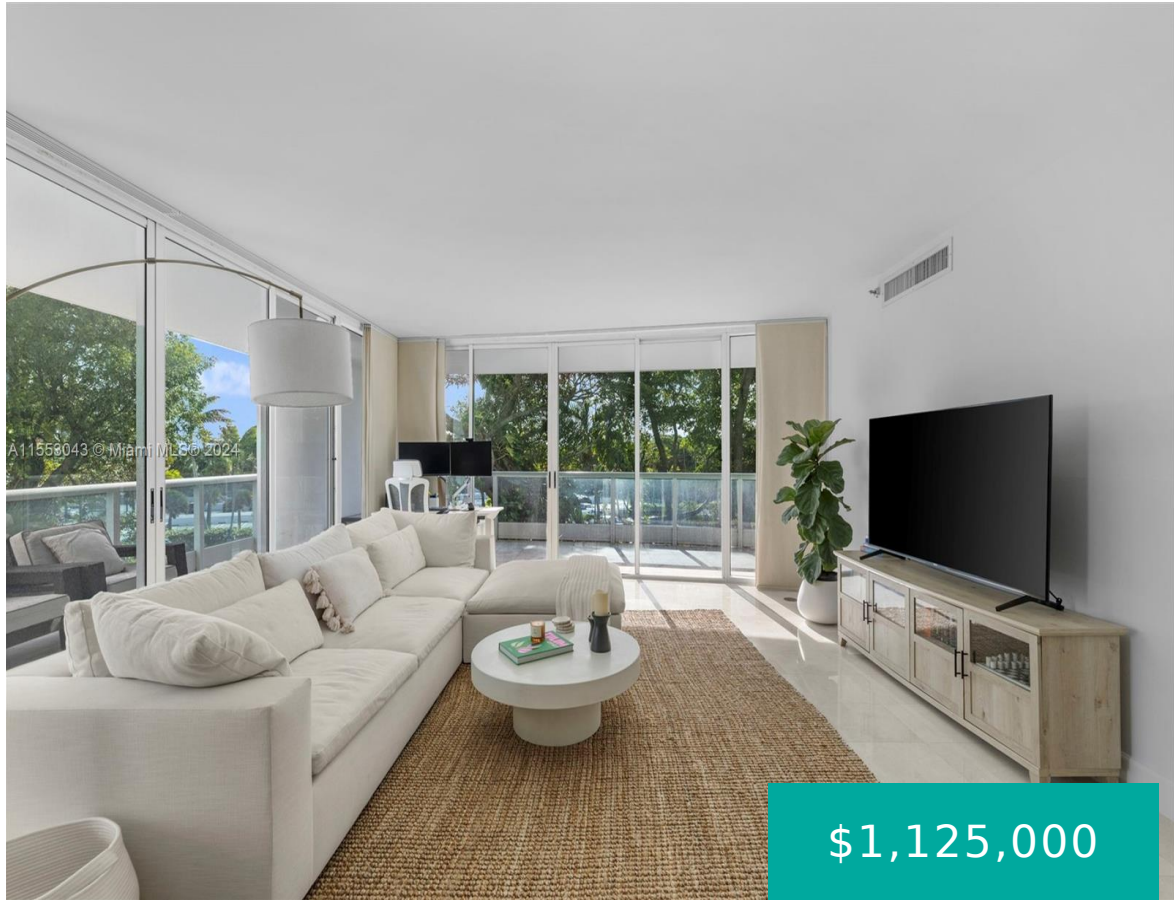


# 2127 BRICKELL AVE 505 MIAMI FL 33129

<https://www.cays.com>



\$1,125,000



From the moment you pull-in to this urban oasis, you'll see the magic of Bristol Towers. This iconic and luxurious building is in one of the most desirable parts of Brickell, minutes from Coconut Grove, Key Biscayne, & Coral Gables. This 2 bedroom, 2 bathroom spacious corner unit boasts 1500 SF of interior space and [...]

- 2 beds
- 2 baths
- Condominium
- Residential
- Active
- 1500 sq ft

## Basics

**Bathrooms Full:** 2  
**Category:** Residential  
**Status:** Active  
**Bathrooms:** 2 baths  
**Year built:** 1993

**Lot Size Units:** Square Feet  
**Type:** Condominium  
**Bedrooms:** 2 beds  
**Area:** 1500 sq ft



---

## Property details

**Total Building Area:** 1500

**Subdivision Name:** BRISTOL TOWER CONDO

**Parcel Number:** 01-41-39-055-0500

**Possession:** Close Of Escrow

---

## Property Features

**Exterior Features:** Balcony,Security/High Impact Doors

**Interior Features:** Bedroom on Main Level,First Floor Entry

**Window Features:** Blinds

**Pool Features:** Association

**Parking Features:** One Space

**Security Features:** Door Man,Elevator Secured,Security Guard

**Appliances:** Dryer,Dishwasher,Electric Range,Microwave,Refrigerator,Self Cleaning Oven,Washer

**Architectural Style:** High Rise

**Association Amenities:** Billiard Room,Clubhouse,Elevator(s),Fitness Center,Barbecue,Picnic Area,Playground,Pool,Sauna,Spa/Hot Tub

**Construction Materials:** Block

**Cooling:** Central Air

**Cooling Y/N:** 1

**Covered Spaces:** 1

**Flooring:** Tile,Wood

**Garage Spaces:** 1

**Garage Y/N:** 1

**Heating:** Central

**Heating Y/N:** 1

**Pets Allowed:** Conditional,Yes

**View:** Garden

**Entry Level:** 5

**Entry Location:** 5

**Patio and Porch Features:** Balcony,Open

**Property Attached Y/N:** 1

**Stories Total:** 40

---

## Rooms & Units Description

**Unit Number:** 505

---

## Location Details



County Or Parish: Miami-Dade County

---

## Fees & Taxes

**Tax Annual Amount:** 11695

**Tax Year:** 2023

**Tax Legal Description:** BRISTOL TOWER  
CONDO UNIT 505 UNDIV 0.48788% INT IN  
COMMON ELEMENTS OFF REC 16070-1107  
OR 20618-2065 08/2002 1 COC  
26065-4645 11 2007 5

**Association Fee:** 2632

**Association Fee Frequency:** Monthly

**Association Fee Includes:**  
Amenities, Maintenance  
Structure, Parking, Sewer, Trash, Water

---

## Miscellaneous

**Public Survey Township:** 1

**Public  
Survey  
Section:** 39

**Syndication Remarks:** This 2 bed/2 bath spacious 1500 SF corner unit at the iconic Bristol Tower, features an oversized wrap around balcony with lush tropical landscape.

**Year Built  
Details:**  
Resale

**Virtual Tour URL:** <https://www.propertypanorama.com/instaview/mia/A11553043>

---

## Courtesy of

**Office Name:** Douglas Elliman

