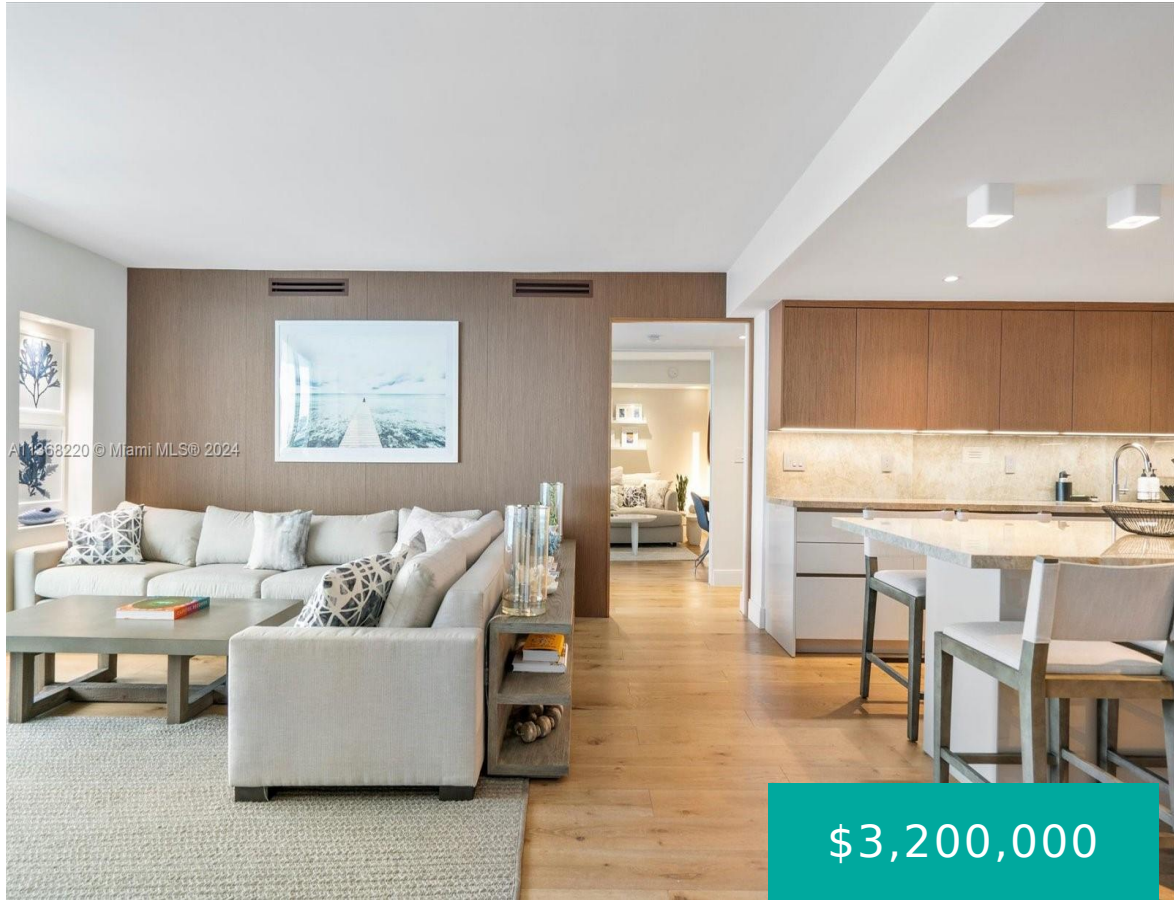


2301 COLLINS AVE MIAMI BEACH FL 33139 2301 COLLINS AVE 1536/1537

<https://www.cays.com>



\$3,200,000

RONEY PALACE CONDO UNIT 1536 UNDIV 0.0014686 INT IN COMMON ELEMENTS OFF REC 17787-1644 COC 24064-0398 11 2005 1 Complete renovation completed in 2021. Meticulously designed 2 BEDROOM + DEN with customized Armazen Ktichen, Bosch appliances, built ins, open kitchen, spa like bathrooms. Large terrace with unobstructed west, north and south view. Includes basic cable [...]

- 2 beds
- 2, 3 baths
- Condominium, Residential
- Condominium, Residential
- Active
- 1720 sq ft

Basics



Bathrooms Half: 1

Type: Condominium, Residential

Bedrooms: 2 beds

Half baths: 1 half bath

Floors: 16 floors

Year built: 1926

Subdivision Name: RONEY PALACE CONDO

Category: Condominium, Residential

Status: Active

Bathrooms: 2, 3 baths

Total rooms: 1

Area: 1720 sq ft

View: Bay, Canal, Water

County: Miami-Dade County

Property details

Subdivision Name: RONEY PALACE CONDO

Parcel Number: 33139

Property Features

Waterfront Features: BayFront, OceanAccess, OceanFront

Cooling: CentralAir

Garage Y/N: 1

Heating Y/N: 1

View: Bay, Canal, Water

Waterfront Y/N: 1

Parking Features: Valet

Cooling Y/N: 1

Heating: Central

Pets Allowed: SizeLimit, Yes

View Y/N: 1

Stories Total: 16

Rooms & Units Description

Unit Number: 1536/1537

Total Rooms: 1

Location Details

County Or Parish: Miami-Dade County



Building Details

Architectural Style: HighRise

Covered Spaces: 2

Floor covering: CeramicTile, Marble, Other, Wood

Construction Materials: Block

Garage Spaces: 2

Amenities & Features

Pool Features: Association,Heated

Security Features: DoorMan,ElevatorSecured,SecurityGuard,FireSprinklerSystem

Association Amenities: BikeStorage,BusinessCenter,Clubhouse,CommunityKitchen,FitnessCenter,HobbyRoom,Laundry,Other,Pool,Sauna,SpaHotTub,Elevators

Window Features: Blinds,ImpactGlass

Exterior Features: Balcony

Interior Features:

BuiltInFeatures,BedroomonMainLevel,ConvertibleBedroom,ClosetCabinetry,DualSinks,EatinKitchen,KitchenIsland,LivingDiningRoom,Other,Pantry,TubShower,WalkInClosets,Bar

Appliances: BuiltInOven,Dryer,Dishwasher,ElectricRange,ElectricWaterHeater,Disposal,IceMaker,Microwave,Refrigerator

Parking Features: Valet

Patio & Porch Features: Balcony,Open

Waterfront Features: BayFront,OceanAccess,OceanFront

Cooling: CentralAir

Heating: Central

Laundry Features: CommonArea

Expenses, Fees & Taxes

Association Fee: \$3,610

Tax Annual Amount: \$20,131

Tax Year: 2022

Fees & Taxes

Association Fee: 3610

Miscellaneous

Association Fee Frequency: Monthly

List Office Name: Douglas Elliman

Listing Terms: Cash,Conventional,Other

Miscellaneous



Above Grade
Finished Area:
Miami Beach, FL

Virtual Tour URL:
<https://www.propertypanorama.com/instaview/mia/A11368220>

Courtesy of

Office Name: Douglas Elliman

