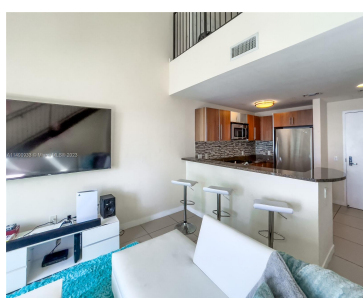
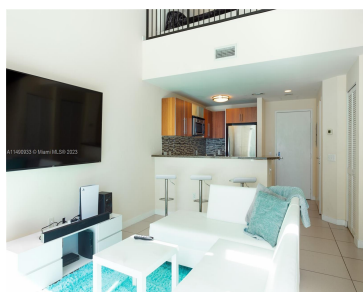
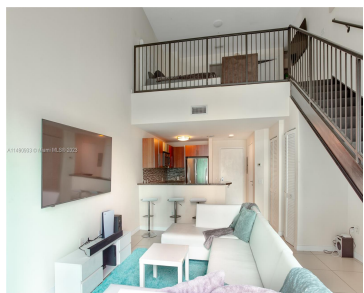


# 300 S BISCAYNE BLVD L-1210 MIAMI FL 33131

<https://www.cays.com>



Located in the heart of Downtown Miami, the loft style one bedroom plus den, one and a half bath apartment boasts stunning views of Biscayne Bay and the Miami River from its balcony. The unit has soaring double height ceilings, impact windows, sleek granite countertops, stainless steel appliances, tile floors, and full size washer and [...]

- 1 bed
- 2 baths
- Condominium
- Residential
- Active
- 824 sq ft

## Basics

**Bathrooms Half:** 1  
**Lot Size Units:** Square Feet  
**Type:** Condominium  
**Bedrooms:** 1 bed  
**Area:** 824 sq ft

**Bathrooms Full:** 1  
**Category:** Residential  
**Status:** Active  
**Bathrooms:** 2 baths  
**Year built:** 2008



---

## Property details

**Total Building Area:** 824

**Subdivision Name:** MET 1 CONDO

**Possession:** Negotiable

**Direction Faces:** South

**Parcel Number:** 01-41-37-062-0270

---

## Property Features

**Building Features:** Exterior Lighting

**Interior Features:** Built-in Features,High Ceilings,Living/Dining Room,Upper Level Primary,Walk-In Closet(s)

**Window Features:** Blinds,Impact Glass

**Security Features:** Door Man,Secured Garage/Parking,Lobby Secured,Fire Sprinkler System,Smoke Detector(s)

**Architectural Style:** High Rise

**Construction Materials:** Block

**Cooling Y/N:** 1

**Flooring:** Tile

**Garage Y/N:** 1

**Heating Y/N:** 1

**View:** Bay,Other,River,Water

**Entry Level:** 12

**Patio and Porch Features:** Balcony,Open

**Waterfront Y/N:** 1

**Stories Total:** 40

**Exterior Features:** Balcony,Security/High Impact Doors

**Waterfront Features:** Other

**Parking Features:** Assigned,Attached,Garage,One Space

**Appliances:** Dryer,Dishwasher,Electric Range,Microwave,Refrigerator,Washer

**Association Amenities:** Billiard Room,Bike Storage,Clubhouse,Fitness Center,Playground,Spa/Hot Tub

**Cooling:** Central Air,Electric

**Covered Spaces:** 1

**Garage Spaces:** 1

**Heating:** Central,Electric

**Pets Allowed:** Conditional,Yes

**View Y/N:** 1

**Entry Location:** 12

**Property Attached Y/N:** 1

**Attached Garage Y/N:** 1

**Utilities:** Cable Available



---

## Rooms & Units Description

**Unit Number:** L-1210

---

## Location Details

**County Or Parish:** Miami-Dade County

**Directions:** I-95 to exit to 2A to Biscayne Blvd

---

## Fees & Taxes

**Tax Annual Amount:** 5210

**Tax Year:** 2022

**Tax Legal Description:** MET  
1 CONDO UNIT L-1210 UNDIV  
0.1941% INT IN COMMON  
ELEMENTS OFF REC  
26350-1966

**Association Fee:** 978

**Association Fee Frequency:**  
Monthly

**Association Fee Includes:** Association  
Management,Amenities,Common Areas,Cable  
TV,Internet,Maintenance  
Grounds,Parking,Sewer,Security,Trash,Water

---

## Miscellaneous

**Public Survey Township:** 1

**Public  
Survey  
Section:** 37

**Syndication Remarks:** Located in the heart of Downtown Miami, the romantic loft style one bed, 1.5 bath apartment boasts spectacular views of Biscayne Bay from its balcony.

**Year Built  
Details:**  
Resale

**Virtual Tour URL:** <https://my.matterport.com/show/?m=FMuusC6ueLc&mls=1>

---

## Courtesy of



**Office Name:** One Sotheby's International Re

