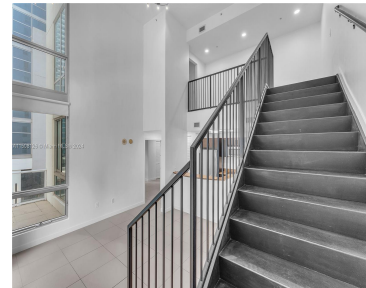
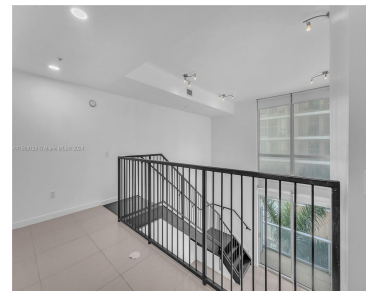
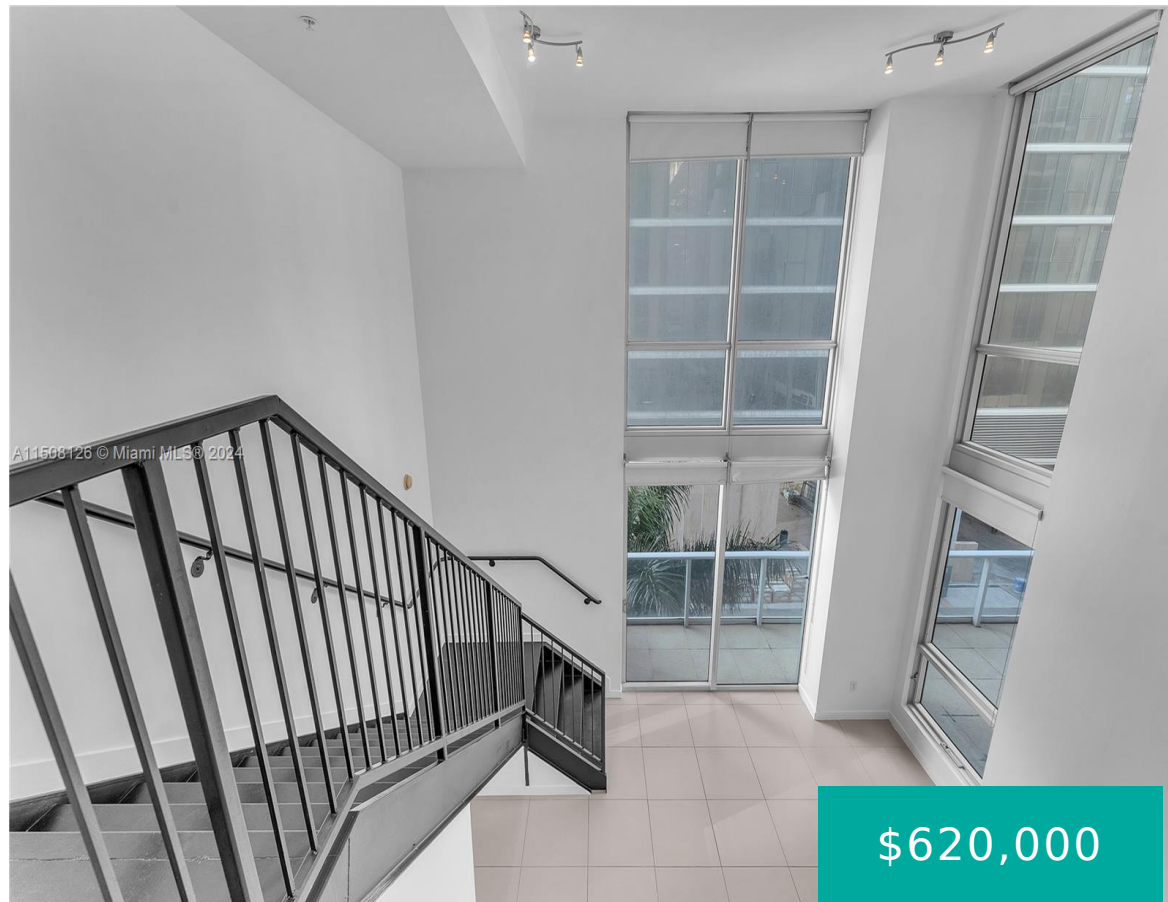


300 S BISCAYNE BLVD L-402 MIAMI FL 33131

<https://www.cays.com>



Experience urban elegance in this 2-bed, 2.5-bath loft condo at Brickell's Met 1. Enjoy panoramic city and partial water views. Convenience is essential with an in-unit washer/dryer, designated parking, and spacious walk-in closets. The Euro-style kitchen, high ceilings, and open living space flow seamlessly to the expansive balcony. Bedrooms are strategically placed for privacy, accommodating [...]

- 2 beds
- 3 baths
- Condominium
- Residential
- Active
- 1213 sq ft

Basics

Bathrooms Half: 1

Lot Size Units: Square Feet

Type: Condominium

Bedrooms: 2 beds

Area: 1213 sq ft

Bathrooms Full: 2

Category: Residential

Status: Active

Bathrooms: 3 baths

Year built: 2008



Property details

Total Building Area: 1213

Parcel Number: 01-41-37-062-0010

Subdivision Name: MET 1 CONDO

Possession: Close Of Escrow

Property Features

Exterior Features: Balcony,Privacy Wall

Laundry Features: Washer Hookup,Dryer Hookup

Window Features: Blinds

Parking Features:

Assigned,Attached,Garage,One Space

Appliances: Built-In Oven,Dishwasher,Electric Range,Electric Water Heater,Ice Maker,Microwave,Refrigerator

Association Amenities: Billiard Room,Clubhouse,Fitness Center,Pool,Sauna,Spa/Hot Tub,Trash,Elevator(s)

Cooling: Central Air,Electric

Covered Spaces: 1

Flooring: Ceramic Tile

Garage Spaces: 1

Heating: Electric

Pets Allowed: Conditional,Yes

View Y/N: 1

Entry Location: 4

Property Attached Y/N: 1

Attached Garage Y/N: 1

Interior Features: Breakfast Bar,Bedroom on Main Level,Dual Sinks,Family/Dining Room,First Floor Entry,High Ceilings,Main Level Primary,Main Living Area Entry Level,Split Bedrooms,Walk-In Closet(s),Elevator,Loft

Waterfront Features: Bay Front

Pool Features: Association

Security Features: Elevator Secured,Secured Garage/Parking,Key Card Entry,Smoke Detector(s)

Architectural Style: High Rise

Construction Materials: Block

Cooling Y/N: 1

Electric: Fuses

Furnished: Unfurnished

Garage Y/N: 1

Heating Y/N: 1

View: Bay,City

Entry Level: 4

Patio and Porch Features: Balcony,Open

Waterfront Y/N: 1

Stories Total: 40



Rooms & Units Description

Unit Number: L-402

Location Details

County Or Parish: Miami-Dade County

Fees & Taxes

Tax Annual Amount: 9389

Tax Year: 2023

Tax Legal Description: MET 1 CONDO UNIT L-402
UNDIV 0.2857% INT IN COMMON ELEMENTS OFF
REC 26350-1966

Association Fee: 1515

Association Fee Frequency: Monthly

Association Fee Includes: Common
Areas,Maintenance Structure,Roof

Miscellaneous

Public Survey Township: 37

**Public
Survey
Section:** 37

Syndication Remarks: Chic 2-bed, 2.5-bath Met 1 loft condo in Brickell. Partial bay and city views, in-unit washer/dryer, designated parking and private balcony.

**Year Built
Details:**
Effective Year
Built

Virtual Tour URL:

<https://www.propertypanorama.com/instaview/mia/A11508126>

Courtesy of

Office Name: Keller Williams Elite Properties

