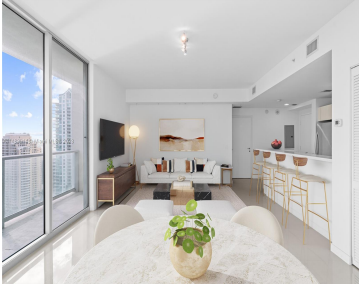


300 S BISCAYNE BLVD T-2616 MIAMI FL 33131

<https://www.cays.com>



Discover urban luxury at its pinnacle! This 2 bed, 2 bath oasis in Met 1 condo, features a newly renovated kitchen for culinary delights. The expansive primary bedroom, complete with a newly upgraded custom closet and ensuite bathroom, is a tranquil escape. Step onto the large wraparound balcony for panoramic views of Brickell Key, Downtown [...]

- 2 beds
- 2 baths
- Condominium
- Residential
- Active
- 1126 sq ft

Basics

Bathrooms Full: 2

Category: Residential

Status: Active

Bathrooms: 2 baths

Year built: 2008

Lot Size Units: Square Feet

Type: Condominium

Bedrooms: 2 beds

Area: 1126 sq ft



Property details

Total Building Area: 1126

Direction Faces: East

Subdivision Name: MET 1 CONDO

Parcel Number: 01-41-37-062-4150

Possession: Closing & Funding

Property Features

Exterior Features:

Balcony, Security/High Impact Doors

Interior Features: Bedroom on Main Level, Closet Cabinetry, First Floor Entry, Walk-In Closet(s)

Waterfront Features: Bay Front, River Front

Window Features: Impact Glass

Pool Features: Association, Heated

Parking Features: Assigned, One Space

Security Features: Door Man, Secured Garage/Parking, Key Card Entry, Fire Sprinkler System, Smoke Detector(s)

Appliances: Dryer, Dishwasher, Electric Range, Disposal, Microwave, Refrigerator, Washer

Architectural Style: High Rise

Association Amenities: Billiard Room, Business Center, Elevator(s), Fitness Center, Playground, Pool, Sauna, Spa/Hot Tub, Trash

Construction Materials: Block

Cooling: Central Air, Electric

Cooling Y/N: 1

Covered Spaces: 1

Flooring: Tile

Garage Spaces: 1

Garage Y/N: 1

Heating: Central, Electric

Heating Y/N: 1

Pets Allowed: Conditional, Yes

View: Bay, City, River

View Y/N: 1

Entry Level: 26

Entry Location: 26

Patio and Porch Features: Balcony, Open

Property Attached Y/N: 1

Waterfront Y/N: 1

Stories Total: 44

Rooms & Units Description



Unit Number: T-2616

Location Details

County Or Parish: Miami-Dade County

Fees & Taxes

Tax Annual Amount: 8738

Tax Year: 2022

Tax Legal Description: MET 1 CONDO
UNIT T-2616 UNDIV 0.2652% INT IN
COMMON ELEMENTS OFF REC 26350-1966

Association Fee: 1210

Association Fee Frequency: Monthly

Association Fee Includes: Cable
TV,Internet,Pool(s),Sewer,Water

Miscellaneous

Public Survey Township: 1

**Public Survey
Section:** 37

Syndication Remarks: This 2 bed, 2 bath oasis in Met 1 condo, features a newly renovated kitchen, expansive primary bedroom with newly upgraded custom closet!

**Year Built
Details:** Resale

Virtual Tour URL: <https://youtu.be/OGGYYYkPfk>

Courtesy of

Office Name: Cervera Real Estate Inc.

