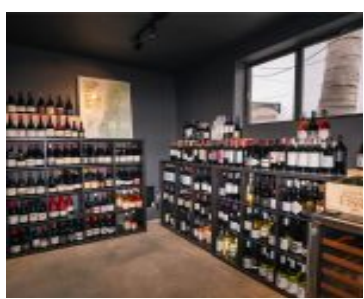


3020 7TH AVE MIAMI FL 33127 3020 NW 7TH AVE

https://www.cays.com



DE LEON PARK PB 3-165 N40FT OF LOTS 1 & 2 BLK 1 LOT SIZE 40.000 X 110
 COC 25714-1637 10 2006 5 Proud to present the rare opportunity to acquire a
 Flex Space property with direct frontage on bustling NW 7th Ave in East
 Allapattah. Occupying two lots for a total of 6,768 sq.ft., [...]

- 0 baths
- Commercial, CommercialSale
- CommercialSale
- Active

Basics

Category: CommercialSale

Status: Active

Lot size: 6768, 6768 sq ft

County: Miami-Dade

Type: Commercial, CommercialSale

Bathrooms: 0 baths

Year built: 1940



Property details

Building Name: ALLAPATTAH FLEX SPACE

Lot Size Square Feet: 6768

Parcel Number: 33127

Location Details

County Or Parish: Miami-Dade

Directions: The site is located just minutes from Wynwood, Midtown, Edgewater, Design District, Downtown, Miami Int'l Airport. As well as offering close proximity to major thoroughfares I-95, I-195, State Road 112 and just south of NW 36th St.

Zoning Description:
4801

Building Details

Building Name: ALLAPATTAH FLEX SPACE

Structure Type: Office,Retail

Number Of Buildings: 1

Expenses, Fees & Taxes

Tax Annual Amount: \$6,083

Miscellaneous

List Office Name: APEX Capital Realty LLC

Miscellaneous



Above Grade **Virtual Tour URL:**
Finished Area: <https://www.propertypanorama.com/instaview/mia/A11578916>
Miami, FL

Courtesy of

Office Name: APEX Capital Realty LLC

