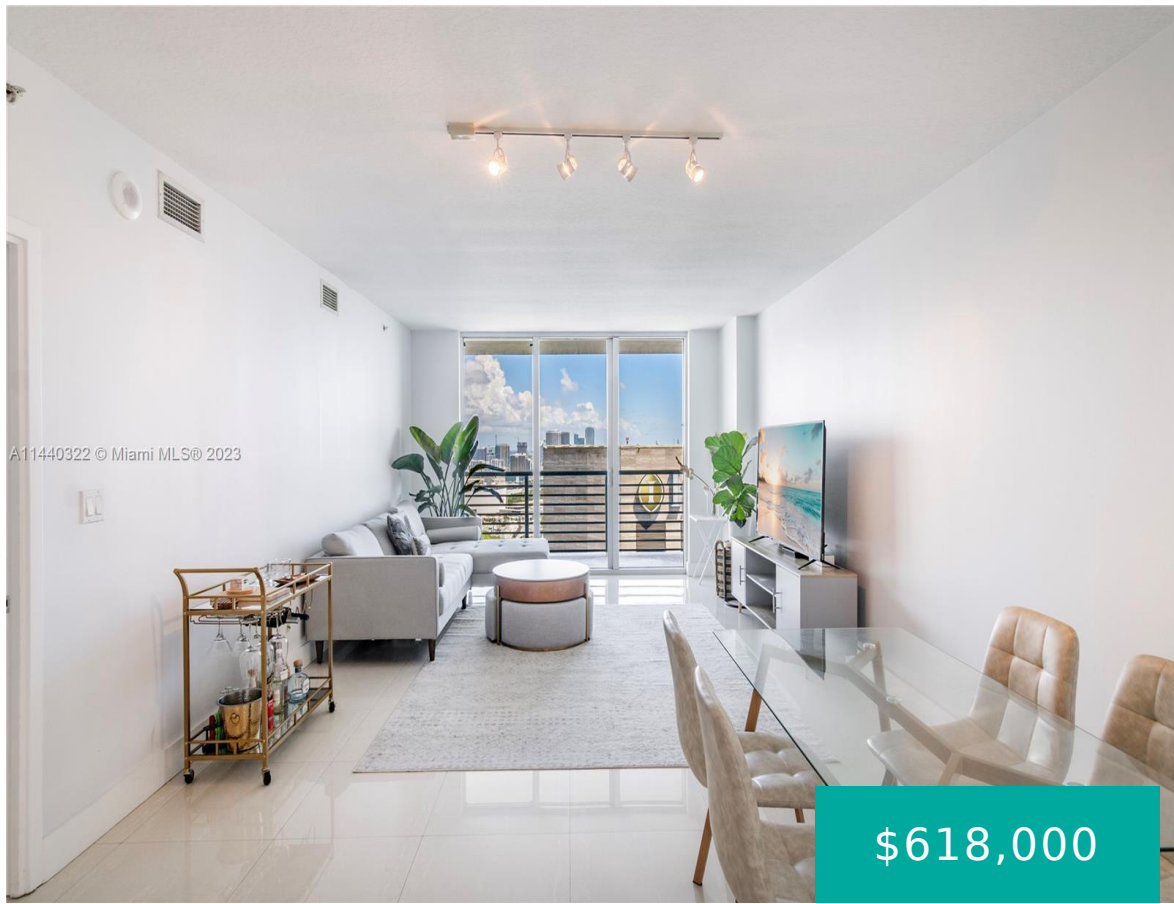


335 BISCAYNE BLVD MIAMI FL 33131 335 S BISCAYNE BLVD 3900

<https://www.cays.com>



A11440322 © Miami MLS® 2023

\$618,000



ONE MIAMI EAST CONDO UNIT 3900 UNDIV 0.22% INT IN COMMON ELEMENTS OFF REC 24030-4560 COC 24392-1516 02 2006 1 Welcome to this stunning 2 bed, 2 bath residence at One Miami, offering luxurious urban living where the Miami River meets Biscayne Bay. Located on a high floor with incredible views of the city and [...]

- 2 beds
- 2, 2 baths
- Condominium, Residential
- Condominium, Residential
- Active
- 1105 sq ft

Basics



Category: Condominium, Residential
Status: Active
Bathrooms: 2, 2 baths
Floors: 44 floors
Year built: 2005
Subdivision Name: ONE MIAMI EAST CONDO

Type: Condominium, Residential
Bedrooms: 2 beds
Half baths: 0 half baths
Area: 1105 sq ft
View: Bay,City
County: Miami-Dade

Property details

Subdivision Name: ONE MIAMI EAST CONDO

Parcel Number: 33131

Property Features

Waterfront Features:
Bayfront,RiverFront

Cooling: Electric

Garage Y/N: 1

Heating Y/N: 1

View: Bay,City

Waterfront Y/N: 1

Parking Features:
Attached,Covered,Garage,OneSpace,Valet

Cooling Y/N: 1

Heating: Electric

Pets Allowed: Conditional,Yes

View Y/N: 1

Stories Total: 44

Rooms & Units Description

Unit Number: 3900

Location Details

County Or Parish: Miami-Dade



Building Details

Architectural Style: HighRise

Covered Spaces: 1

Floor covering: CeramicTile, Tile

Construction Materials: Block

Garage Spaces: 1

Amenities & Features

Pool Features: Association

Security Features:

DoorMan,SecuredGarageParking,SecurityGuard,SmokeDetectors

Association Amenities:

Clubhouse,FitnessCenter,Pool,Sauna,SpaHotTub,Elevators

Window Features: Blinds,ImpactGlass

Exterior Features: Balcony,SecurityHighImpactDoors

Interior Features: TubShower

Parking Features: Attached,Covered,Garage,OneSpace,Valet

Patio & Porch Features: Balcony,Open

Waterfront Features: Bayfront,RiverFront

Cooling: Electric

Heating: Electric

Appliances:

Dryer,Dishwasher,ElectricRange,Microwave,Refrigerator,Washer

Expenses, Fees & Taxes

Association Fee: \$1,036

Tax Year: 2022

Tax Annual Amount: \$7,829

Fees & Taxes

Association Fee: 1036

Miscellaneous

Association Fee Frequency: Monthly **List Office Name:** Douglas Elliman

Listing Terms: Cash,Conventional



Miscellaneous

Above Grade **Virtual Tour URL:**
Finished Area: <https://www.propertypanorama.com/instaview/mia/A11440322>
Miami, FL

Courtesy of

Office Name: Douglas Elliman

