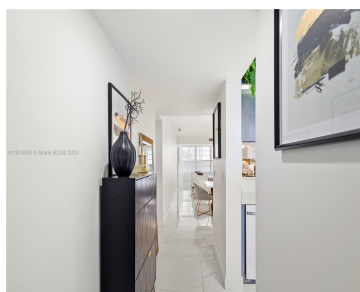
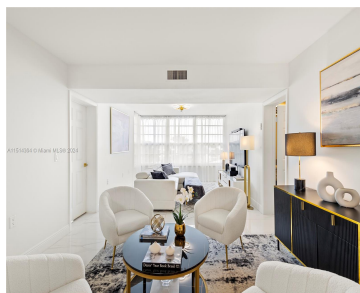
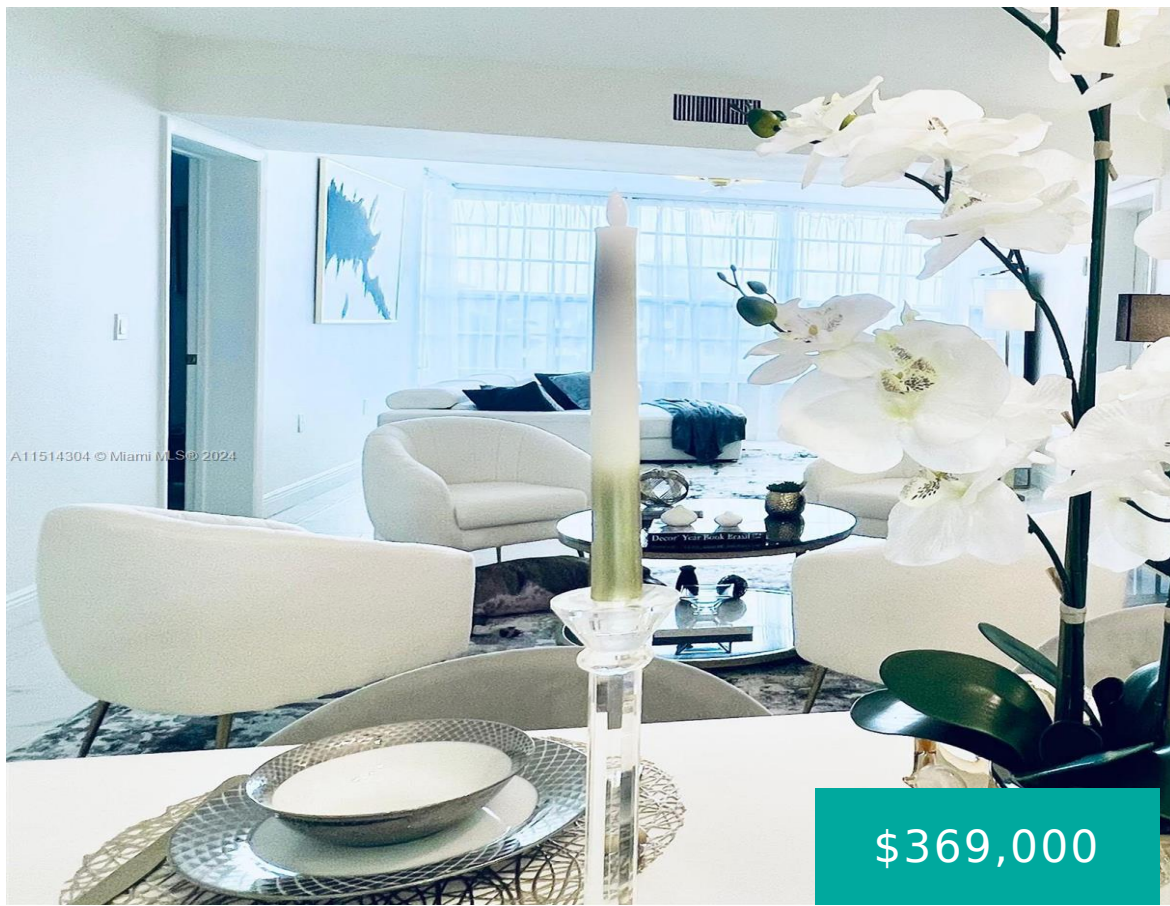


3635 WHITEHALL DR 401 WEST PALM BEACH FL 33401

<https://www.cays.com>



This beautiful apartment is move-in ready with updates that prioritize elegance, security (hurricane-proof windows), and high-quality finishes! It offers a large room for four environments: TV room, conversation room, dining room, and bar. It has two large bedrooms. The large master suite features a large walk-in closet with a custom designer built-in. Great laundry area [...]

- 2 beds
- 2 baths
- Condominium
- Residential
- Active
- 1437 sq ft

Basics

Bathrooms Full: 2

Category: Residential

Status: Active

Bathrooms: 2 baths

Year built: 1984

Lot Size Units: Square Feet

Type: Condominium

Bedrooms: 2 beds

Area: 1437 sq ft



Property details

Total Building Area: 1437

Parcel Number: 74434307060014010

Property Condition: Updated/Remodeled

Subdivision Name: WHITEHALL CONDO OF THE LA

Possession: Closing & Funding,Close Of Escrow

Property Features

Exterior Features: None

Pool Features: Association

Security Features: Complex Fenced,Security Guard

Association Amenities: Clubhouse,Fitness Center,Playground,Pool,Elevator(s)

Cooling: Central Air,Ceiling Fan(s)

Flooring: Ceramic Tile

Heating: Central

Pets Allowed: Conditional,Yes

Entry Level: 4

Stories Total: 4

Interior Features: Bedroom on Main Level,Pantry,Walk-In Closet(s)

Parking Features: Assigned,Guest,One Space

Appliances: Dryer,Dishwasher,Electric Range,Electric Water Heater,Disposal,Microwave,Refrigerator,Washer

Construction Materials: Block

Cooling Y/N: 1

Furnished: Negotiable

Heating Y/N: 1

View: Garden

Entry Location: 4

Rooms & Units Description

Unit Number: 401

Location Details

County Or Parish: Palm Beach County



Fees & Taxes

Tax Annual Amount: 3341

Tax Year: 2023

Tax Legal Description:

COND 1 OF WHITEHALL CONDS
OF THE LANDS OF THE
PRESIDENT UNIT 401

Association Fee: 517

Association Fee Frequency:
Monthly

Association Fee Includes: Association Management,Cable
TV,Insurance,Maintenance Structure,Parking,Pest
Control,Pool(s),Sewer,Security,Trash,Water

Miscellaneous

**Public Survey
Township:** 74

Syndication Remarks: beautiful apartment is move-in ready with stylish
updates and charming details! 2/2 + den converted in a 3rd bed. 1,385 Sqf.

**Year Built
Details:**
Resale

Virtual Tour URL:
<https://www.propertypanorama.com/instaview/mia/A11514304>

Courtesy of

Office Name: Realty World FDR Realty Group

