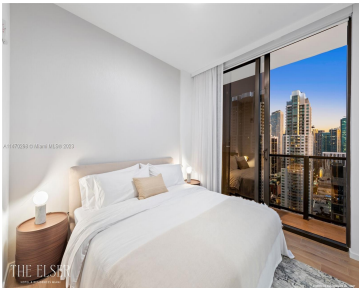


398 NE 5TH ST 2218 MIAMI FL 33132

<https://www.cays.com>



The Elser Residences Is a Collection of Cultivated Studios, 1-, 2- and 3-Bedrooms. Positioned in Miami's most magnetic locale, Downtown Miami, The Elser Hotel and Residences will offer a lively, dynamic lifestyle for tastemakers of every stripe. Enjoy access to an abundance of well-appointed amenities and direct proximity to world-class entertainment, arts, and dining.

- 3 beds
- 3 baths
- Condominium
- Residential
- Active
- 1267 sq ft

## Basics

**Bathrooms Full:** 3  
**Category:** Residential  
**Status:** Active  
**Bathrooms:** 3 baths  
**Year built:** 2022

**Lot Size Units:** Square Feet  
**Type:** Condominium  
**Bedrooms:** 3 beds  
**Area:** 1267 sq ft



## Property details

**Subdivision Name:** The Elser Miami  
**Living Area Source:** Builder

**Possession:** Close Of Escrow,Other

## Property Features



<b>Building Features:</b> Exterior Lighting	<b>Exterior Features:</b> Barbecue,Deck,Security/High Impact Doors
<b>Interior Features:</b> Closet Cabinetry,Entrance Foyer,Kitchen/Dining Combo,Living/Dining Room,Other,Skylights,Walk-In Closet(s),Elevator	<b>Laundry Features:</b> Washer Hookup,Dryer Hookup
<b>Waterfront Features:</b> Bay Front	<b>Window Features:</b> Blinds,Impact Glass,Skylight(s)
<b>Pool Features:</b> Association,Heated	<b>Parking Features:</b> Attached,Covered,Electric Vehicle Charging Station(s),Garage,One Space,Valet
<b>Security Features:</b> Elevator Secured,Fire Alarm,Secured Garage/Parking,Key Card Entry,Security Guard,Smoke Detector(s)	<b>Appliances:</b> Dryer,Dishwasher,Electric Range,Disposal,Microwave,Refrigerator,Trash Compactor,Washer
<b>Architectural Style:</b> High Rise	<b>Association Amenities:</b> Business Center,Clubhouse,Fitness Center,Barbecue,Other,Picnic Area,Pool,Sauna,Spa/Hot Tub,Trash,Elevator(s)
<b>Construction Materials:</b> Brick,Block	<b>Cooling:</b> Central Air
<b>Cooling Y/N:</b> 1	<b>Covered Spaces:</b> 1
<b>Flooring:</b> Tile	<b>Furnished:</b> Furnished
<b>Garage Spaces:</b> 1	<b>Garage Y/N:</b> 1
<b>Heating:</b> Central	<b>Heating Y/N:</b> 1
<b>New Construction Y/N:</b> 1	<b>Pets Allowed:</b> Conditional,Yes
<b>View:</b> Bay	<b>View Y/N:</b> 1
<b>Entry Level:</b> 22	<b>Entry Location:</b> 22
<b>Patio and Porch Features:</b> Deck	<b>Property Attached Y/N:</b> 1
<b>Waterfront Y/N:</b> 1	<b>Attached Garage Y/N:</b> 1
<b>Stories Total:</b> 49	

## Rooms & Units Description

**Unit Number:** 2218

## Location Details



Fees & Taxes

Tax Year: 2022

Association Fee: 1307

Association Fee Includes: Amenities,Common Areas,Cable TV,HVAC,Internet,Maintenance Grounds,Other,Parking,Pool(s),Recreation Facilities,Sewer,Water

Tax Legal Description: MIAMI NORTH PB B-41 LOTS 1 THRU 4 LESS N10FT ALL OF LOTS 18 & 19 BLK 80 & LESS EXT AREA OF CURVE IN NE COR FOR R/W LOT SIZE 33117 SQ FT M/L

Association Fee Frequency: Monthly

Miscellaneous

Development Status: New Construction

Public Survey Township: 1

Public Survey Section: 8

Syndication Remarks: The Elser

Year Built Details: Under Construction

Virtual Tour URL: <https://my.matterport.com/show/?m=1tURdBU9LCp>

Courtesy of

Office Name: PMG Residential LLC

