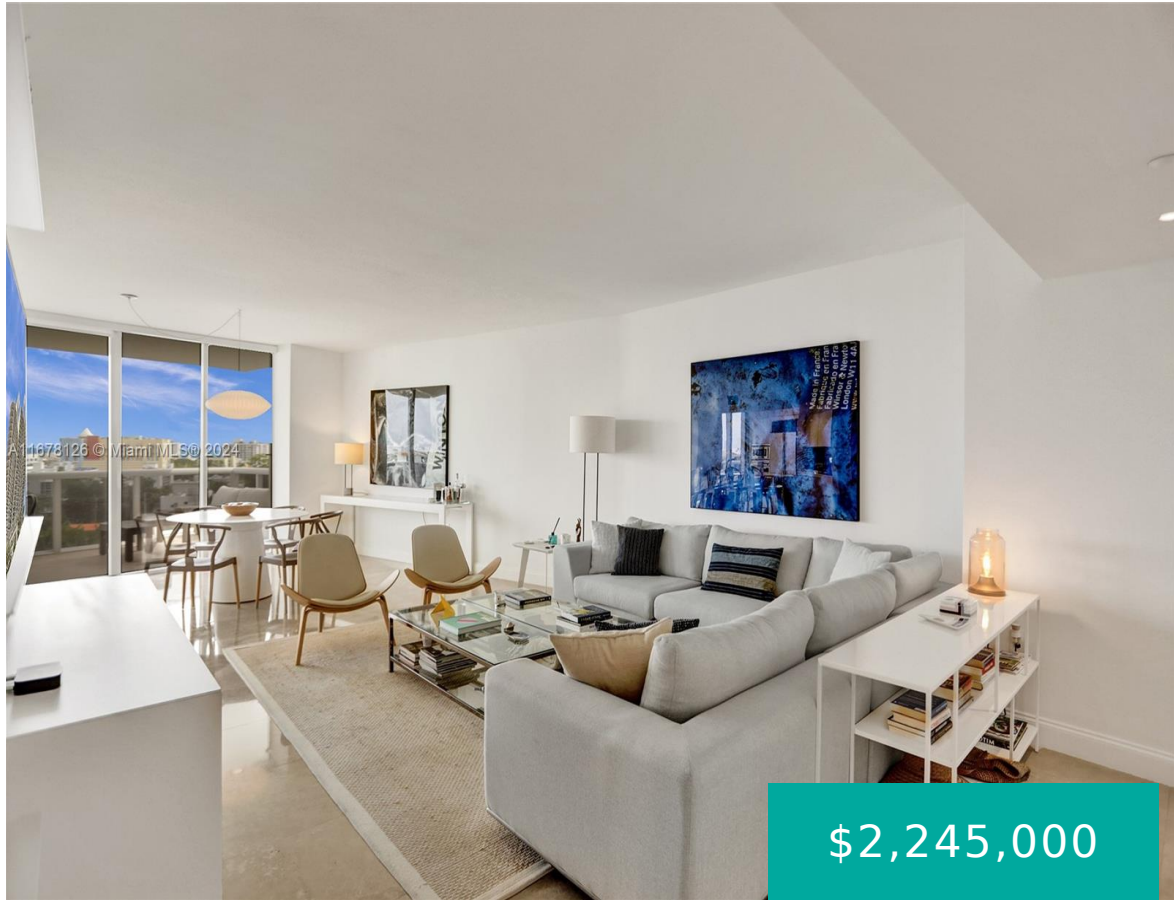


400 ALTON RD MIAMI BEACH FL 33139 400 ALTON RD 911

<https://www.cays.com>



\$2,245,000



MURANO GRANDE AT PORTOFINO CONDO UNIT 911 UNDIV 0.29844% INT IN COMMON ELEMENTS OFF REC 21134-3930 COC 25647-4777 05 2007 5
Discover the epitome of modern elegance here in Murano Grande. This stunning 2-bedroom, 2-bathroom residence spans 1,649 square feet, offering a luxurious waterfront lifestyle. Revel in breathtaking views from the common roof deck or [...]

- 2 beds
- 2, 2 baths
- Condominium, Residential
- Condominium, Residential
- Active
- 1649 sq ft

Basics



Category: Condominium, Residential

Status: Active

Bathrooms: 2, 2 baths

Floors: 37 floors

Year built: 2003

Subdivision Name: MURANO GRANDE AT PORTOFIN

Type: Condominium, Residential

Bedrooms: 2 beds

Half baths: 0 half baths

Area: 1649 sq ft

View: Ocean

County: Miami-Dade

Property details

Subdivision Name: MURANO GRANDE AT PORTOFIN

Parcel Number: 33139

Property Features

Waterfront Features: Other

Cooling: CentralAir

Garage Y/N: 1

Heating Y/N: 1

View: Ocean

Waterfront Y/N: 1

Parking Features: Attached,Covered,Garage

Cooling Y/N: 1

Heating: Central

Pets Allowed: Conditional,Yes

View Y/N: 1

Stories Total: 37

Rooms & Units Description

Unit Number: 911

Location Details

County Or Parish: Miami-Dade

Middle/Junior School: Nautilus

Elementary School: South Pointe

High School: Miami Beach



Building Details

Architectural Style: HighRise

Covered Spaces: 1

Floor covering: Marble

Construction Materials: Block

Garage Spaces: 1

Amenities & Features

Pool Features: Association

Security Features:

DoorMan,ElevatorSecured,KeyCardEntry

Waterfront Features: Other

Cooling: CentralAir

Furnished: Unfurnished

Interior Features:

BedroomOnMainLevel,FirstFloorEntry,WalkInClosets

Parking Features: Attached,Covered,Garage

Association Amenities:

FitnessCenter,Pool,SpaHotTub,TennisCourts,Trash

Utilities: CableAvailable

Exterior Features: SecurityHighImpactDoors

Heating: Central

Appliances:

Dishwasher,ElectricWaterHeater,Disposal

Nearby Schools

Middle Or Junior School: Nautilus

High School: Miami Beach

Elementary School: South Pointe

Expenses, Fees & Taxes

Association Fee: \$7,013

Tax Year: 2024

Tax Annual Amount: \$18,089

Fees & Taxes

Association Fee: 7013



Miscellaneous

Association Fee Frequency: Quarterly **List Office Name:** Compass Florida, LLC.

Listing Terms: Cash,Conventional

Miscellaneous

Above Grade **Virtual Tour URL:**
Finished Area: <https://www.propertypanorama.com/instaview/mia/A11678126>
Miami Beach, FL

Courtesy of

Office Name: Compass Florida, LLC.

