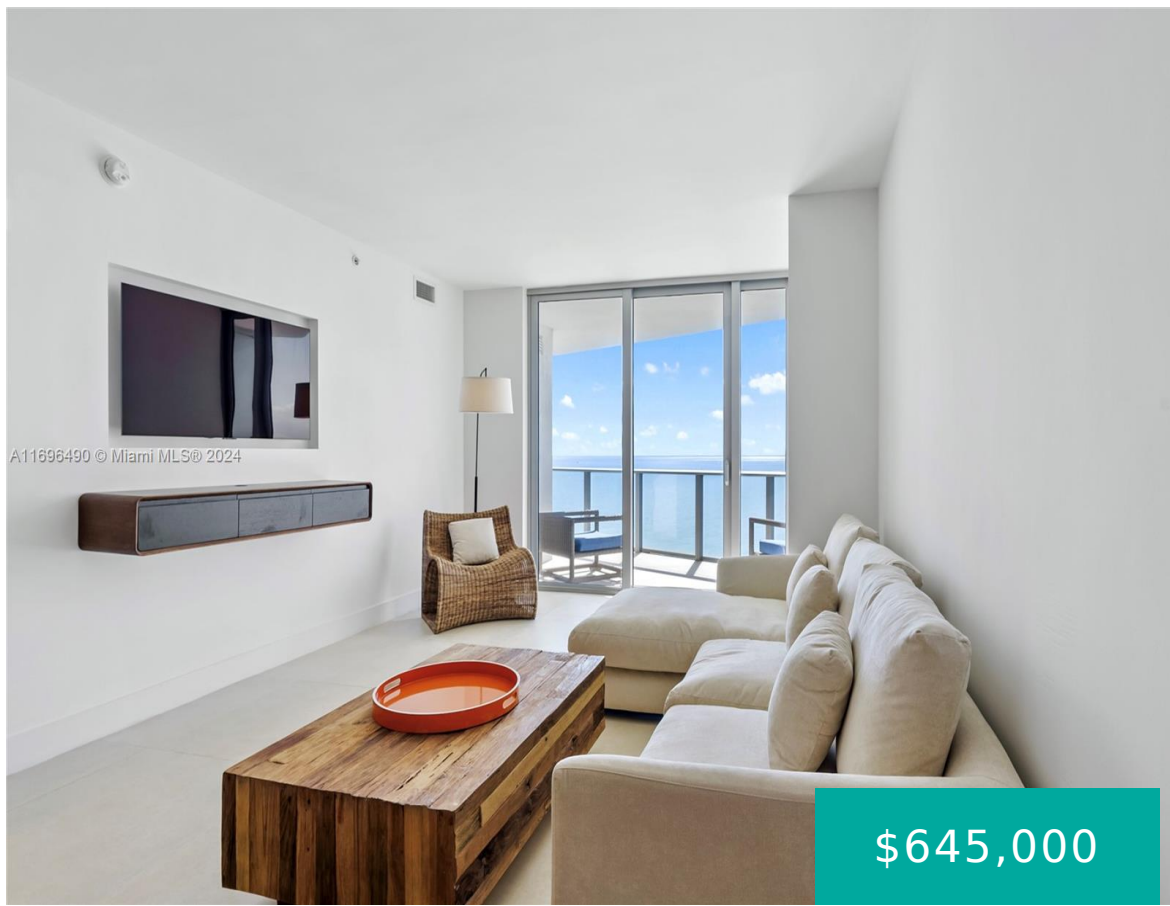


# 4111 OCEAN DR HALLANDALE BEACH FL 33019 4111 S OCEAN DR 2309

<https://www.cays.com>



4111 SOUTH OCEAN DRIVE CONDO HOTEL UNIT 2309 PER CDO BK/PG  
50656/1212 Investors Dream Opportunity! This newly renovated, painted, and fully furnished luxury 1-bedroom/1-bathroom unit in Hallandale Beach offers stunning north-facing direct ocean and city views, making it a serene and stylish retreat for guests. Located in the newly remodeled and rebranded LYFE Resort & [...]

- 1 bed
- 1, 1 bath
- Condominium, Residential
- Condominium, Residential
- Active
- 841 sq ft

## Basics



**Category:** Condominium, Residential

**Status:** Active

**Bathrooms:** 1, 1 bath

**Floors:** 41 floors

**Year built:** 2017

**Subdivision Name:** 4111 SOUTH OCEAN DRIVE CO

**Type:** Condominium, Residential

**Bedrooms:** 1 bed

**Half baths:** 0 half baths

**Area:** 841 sq ft

**View:** City, Intercoastal, Ocean

**County:** Broward

---

## Property details

**Subdivision Name:** 4111 SOUTH OCEAN DRIVE CO

**Parcel Number:** 33019

---

## Property Features

**Waterfront Features:** OceanFront

**Cooling:** CentralAir

**Garage Y/N:** 1

**Heating Y/N:** 1

**View:** City, Intercoastal, Ocean

**Waterfront Y/N:** 1

**Parking Features:** Covered, OneSpace, Valet

**Cooling Y/N:** 1

**Heating:** Central

**Pets Allowed:** No

**View Y/N:** 1

**Stories Total:** 41

---

## Rooms & Units Description

**Unit Number:** 2309

---

## Location Details

**County Or Parish:** Broward



---

## Building Details

**Architectural Style:** HighRise

**Covered Spaces:** 1

**Floor covering:** Tile

**Construction Materials:** Block

**Garage Spaces:** 1

---

## Amenities & Features

**Pool Features:** Association

**Security Features:** DoorMan,ElevatorSecured,KeyCardEntry,SmokeDetectors

**Association Amenities:**

BilliardRoom,BusinessCenter,Clubhouse,FitnessCenter,Playground,Pool,SpaHotTub,Elevators

**Window Features:** ImpactGlass

**Exterior Features:** Balcony

**Interior Features:** BedroomOnMainLevel,FirstFloorEntry,KitchenIsland,WalkInClosets,Bar

**Parking Features:** Covered,OneSpace,Valet

**Patio & Porch Features:** Balcony,Open

**Waterfront Features:** OceanFront

**Cooling:** CentralAir

**Heating:** Central

**Appliances:**

Dryer,Dishwasher,Disposal,Microwave,Refrigerator,Washer

---

## Expenses, Fees & Taxes

**Association Fee:** \$1,029

**Tax Year:** 2024

**Tax Annual Amount:** \$11,925

---

## Fees & Taxes

**Association Fee:** 1029

---

## Miscellaneous

**Association Fee Frequency:** Monthly **List Office Name:** One Sotheby's International Realty

**Listing Terms:** Cash,Cryptocurrency

---

## Miscellaneous



**Above Grade  
Finished Area:**  
Hallandale Beach,  
FL

**Virtual Tour URL:**  
<https://www.propertypanorama.com/instaview/mia/A11696490>

---

## Courtesy of

**Office Name:** One Sotheby's International Realty

