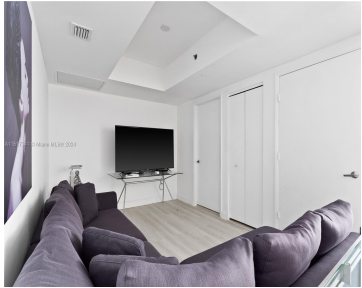


# 465 BRICKELL AVE 2003 MIAMI FL 33131

<https://www.cays.com>



Nestled within Philippe Starck's masterpiece, this 2/2 + Den unit seamlessly combines a cozy, inviting atmosphere with luxurious condo living. Positioned in Tower 1's highly sought-after 03-line, this luminous corner unit boasts the most expansive layout, enhanced by breathtaking panoramic water views. The condo has undergone meticulous upgrades, including new wood floors. Icon Brickell distinguishes [...]

- 2 beds
- 2 baths
- Condominium
- Residential
- Active
- 1313 sq ft

## Basics

**Bathrooms Full:** 2  
**Category:** Residential  
**Status:** Active  
**Bathrooms:** 2 baths  
**Year built:** 2008

**Lot Size Units:** Square Feet  
**Type:** Condominium  
**Bedrooms:** 2 beds  
**Area:** 1313 sq ft



---

## Property details

**Total Building Area:** 1313

**Subdivision Name:** ICONBRICKELL CONDO NO 1

**Parcel Number:** 01-41-38-147-1120 **Possession:** Close Of Escrow

---

## Property Features

**Exterior Features:** Balcony

**Interior Features:** Other,Bar

**Laundry Features:** Washer Hookup,Dryer Hookup

**Waterfront Features:** Bay Front,River Front

**Pool Features:** Association,Heated

**Parking Features:** Assigned,Attached,Covered,Garage,One Space,Garage Door Opener

**Security Features:** Other,Fire Sprinkler System

**Appliances:** Dryer,Dishwasher,Microwave,Refrigerator,Self Cleaning Oven,Washer

**Association Amenities:** Business Center,Cabana,Clubhouse,Fitness Center,Library,Pool,Sauna,Spa/Hot Tub,Trash,Elevator(s)

**Construction Materials:** Other

**Cooling:** Central Air

**Cooling Y/N:** 1

**Covered Spaces:** 1

**Flooring:** Wood

**Garage Spaces:** 1

**Garage Y/N:** 1

**Heating:** Central

**Heating Y/N:** 1

**Pets Allowed:** Conditional,Yes

**View:** Intercoastal,Water

**View Y/N:** 1

**Entry Level:** 20

**Entry Location:** 20

**Patio and Porch Features:** Balcony,Open

**Property Attached Y/N:** 1

**Waterfront Y/N:** 1

**Attached Garage Y/N:** 1

**Stories Total:** 57

---

## Rooms & Units Description

**Unit Number:** 2003



---

## Location Details

**County Or Parish:** Miami-Dade County

---

## Fees & Taxes

**Tax Annual Amount:** 11590

**Tax Year:** 2023

**Tax Legal Description:**  
ICONBRICKELL CONDO NO 1 UNIT  
2003 UNDIV 0.179930% INT IN  
COMMON ELEMENTS OFF REC  
26656-4810

**Association Fee:** 990

**Association Fee Frequency:**  
Monthly

**Association Fee Includes:** Amenities,Common  
Areas,Cable TV,Insurance,Maintenance  
Grounds,Maintenance Structure,Parking,Pest  
Control,Pool(s),Sewer,Security,Water

---

## Miscellaneous

**Public Survey Township:** 1

**Public  
Survey  
Section:** 38

**Syndication Remarks:** Nestled within Philippe Starck's masterpiece, this 2/2 + Den unit seamlessly combines a cozy, inviting atmosphere with luxurious condo living.

**Year Built  
Details:**  
Unknown

**Virtual Tour URL:** <https://www.propertypanorama.com/instaview/mia/A11517341>

---

## Courtesy of

**Office Name:** The Agency Naples

