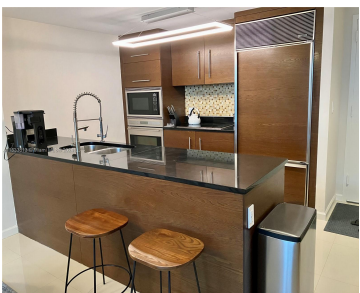
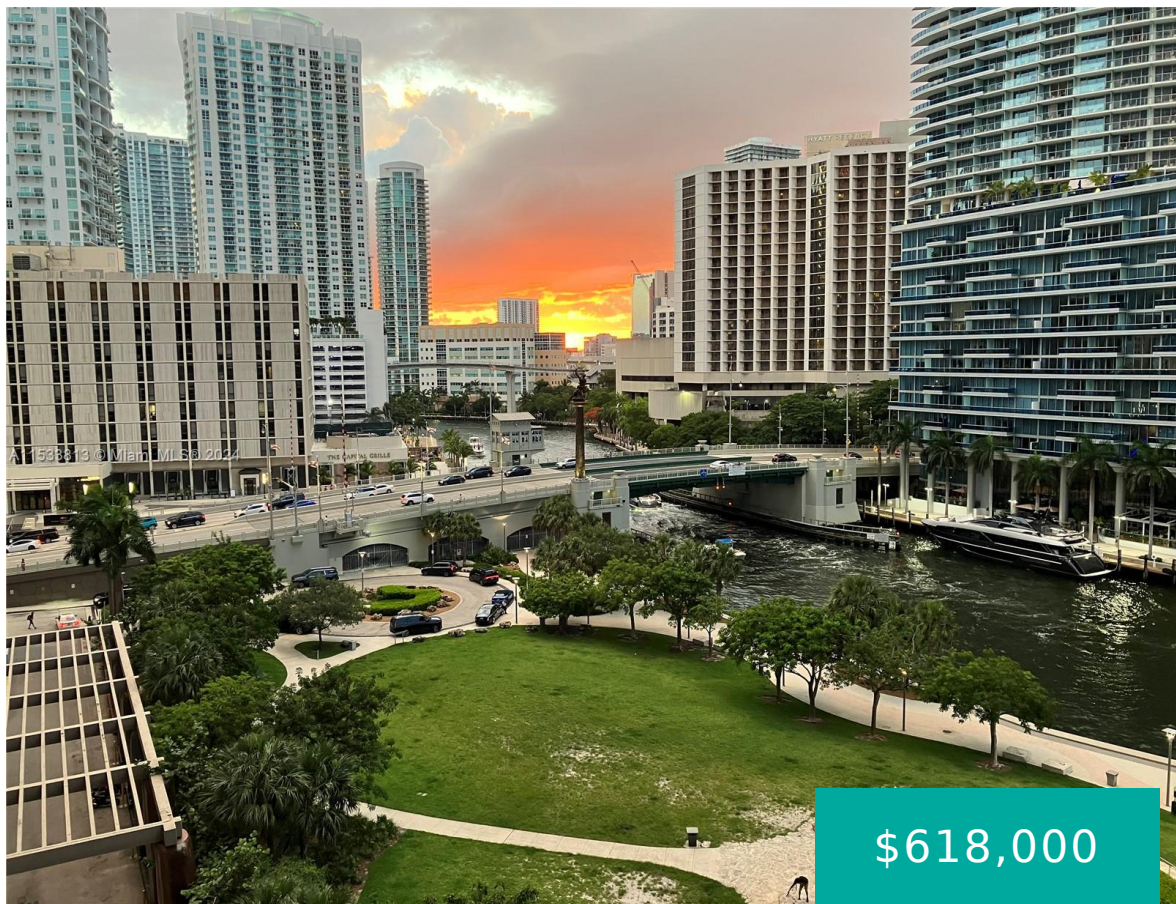


465 BRICKELL AVE 906 MIAMI FL 33131

https://www.cays.com



Waterfront oasis at Icon Brickell Tower 1 - Largest 1 Bed Room / 1 Bathroom unit type in Icon Brickell Tower 1-940 SQ FT of Living Area as per Developer's floor plan. Unit is overlooking the Miami River and Miami Circle. Large Bedroom, Walk in Closet, Top of the line Stainless dishwasher and Sub-Zero Refrigerator [...]

- 1 bed
- 1 bath
- Condominium
- Residential
- Active
- 816 sq ft

Basics

Bathrooms Full: 1
Category: Residential
Status: Active
Bathrooms: 1 bath
Year built: 2008

Lot Size Units: Square Feet
Type: Condominium
Bedrooms: 1 bed
Area: 816 sq ft



Property details

Total Building Area: 816 **Subdivision Name:** ICONBRICKELL CONDO NO 1
Parcel Number: 01-41-38-147-2510 **Possession:** Close Of Escrow

Property Features

Exterior Features: Balcony,Security/High Impact Doors,Patio	Interior Features: Bedroom on Main Level,Breakfast Area,Closet Cabinetry,Dual Sinks,First Floor Entry,Walk-In Closet(s),Elevator
Waterfront Features: River Front	Window Features: Impact Glass
Pool Features: Association,Heated	Parking Features: Covered,One Space
Security Features: Fire Alarm,Key Card Entry,Security Guard,Fire Sprinkler System	Appliances: Dryer,Dishwasher,Disposal,Microwave,Other,Trash Compactor
Architectural Style: High Rise	Association Amenities: Fitness Center,Pool,Sauna,Spa/Hot Tub,Trash,Vehicle Wash Area,Elevator(s)
Construction Materials: Block,Frame,Stucco	Cooling: Central Air
Cooling Y/N: 1	Covered Spaces: 1
Electric: Fuses	Flooring: Marble
Garage Spaces: 1	Garage Y/N: 1
Heating: Heat Pump	Heating Y/N: 1
Pets Allowed: Conditional,Yes	View: River
View Y/N: 1	Entry Level: 9
Entry Location: 9	Patio and Porch Features: Balcony,Open,Patio
Property Attached Y/N: 1	Waterfront Y/N: 1
Stories Total: 58	

Rooms & Units Description

Unit Number: 906



Location Details

County Or Parish: Miami-Dade County

Fees & Taxes

Tax Annual Amount: 5080 Tax Year: 2023

Tax Legal Description: Association Fee: 1120
ICONBRICKELL CONDO NO
1 UNIT 906 UNDIV
0.111823% INT IN
COMMON ELEMENTS OFF
REC 26656-4810

Association Fee Frequency: Quarterly Association Fee Includes: Association Management,Amenities,Common Areas,Cable TV,Insurance,Internet,Legal/Accounting,Maintenance Grounds,Maintenance Structure,Pool(s),Reserve Fund,Roof,Sewer,Security,Trash,Water

Miscellaneous

Public Survey Township: 1

Public Survey Section: 38

Syndication Remarks: Largest 1 Bed Room / 1 Bathroom unit type - 940 SQ FT of Living Area as per Developer's floor plan. Unit is overlooking the Miami River - Park.

Year Built Details: Effective Year Built

Virtual Tour URL: <https://www.propertypanorama.com/instaview/mia/A11533813>

Courtesy of

Office Name: Republic Real Estate Advisors

