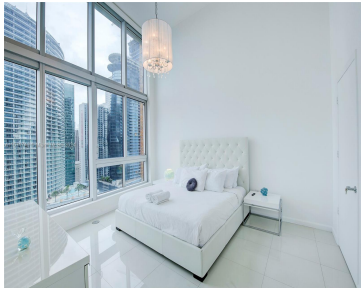
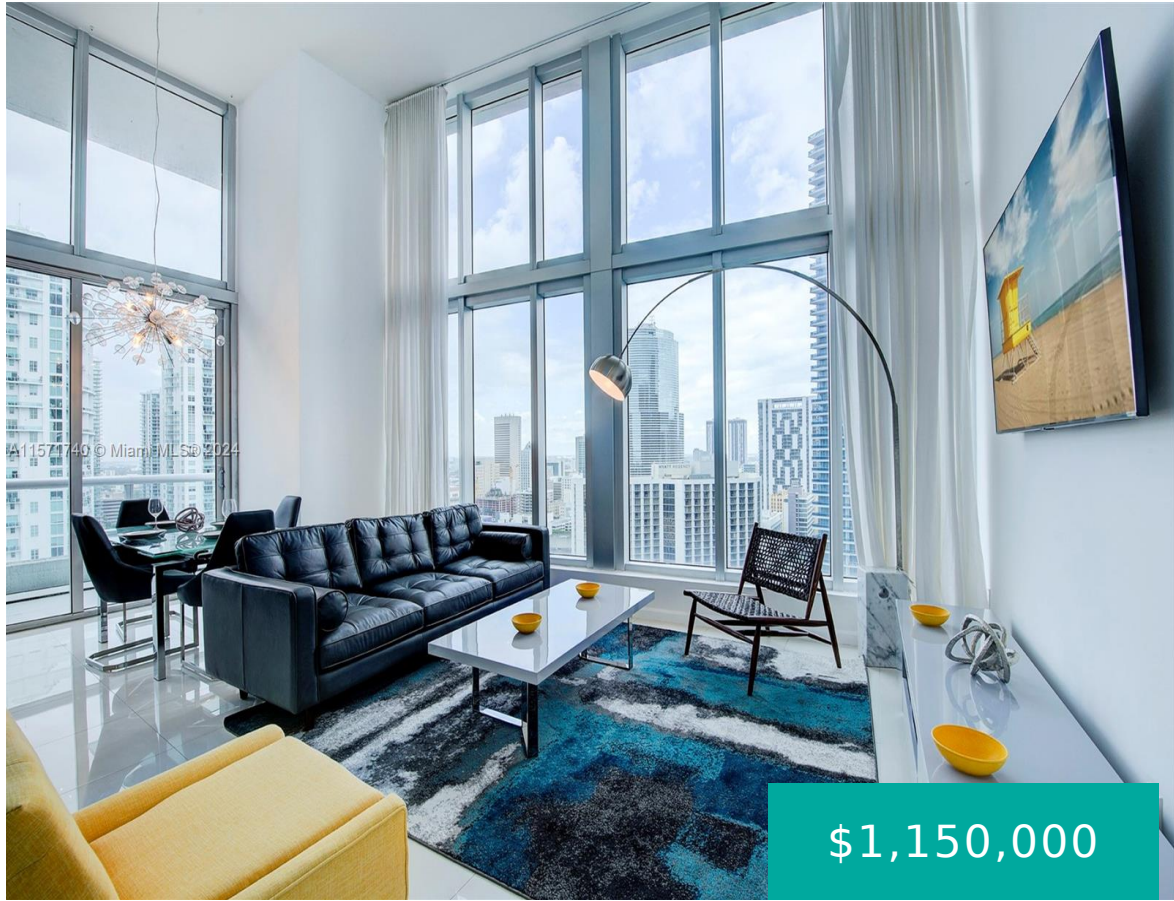


485 BRICKELL AVE 2804 MIAMI FL 33131

<https://www.cays.com>



\$1,150,000

Rare 2/2 NE Corner Unit at Icon Brickell with 16ft. Double-height ceilings, Bay, and Ocean Views. Short-Term Rentals Permitted. Enjoy stunning views of Biscayne Bay, Miami River & Downtown skyline from floor-to-ceiling windows. Move-in ready. Ideal Miami vacation rental investment generating well over \$100k Airbnb income. Top-notch management. Italian kitchen, Subzero Wolf Bosch appliances. Designed [...]

- 2 beds
- 2 baths
- Condominium
- Residential
- Active
- 1286 sq ft

Basics

Bathrooms Full: 2
Category: Residential
Status: Active
Bathrooms: 2 baths
Year built: 2009

Lot Size Units: Square Feet
Type: Condominium
Bedrooms: 2 beds
Area: 1286 sq ft



Property details

Total Building Area: 1286

Subdivision Name: ICON BRICKELL CONDO NO 3

Parcel Number: 01-41-38-149-2630 **Possession:** Immediately,Other

Property Features

Exterior Features:

Balcony,Deck,Security/High Impact Doors,Patio

Accessibility Features: Accessible Elevator Installed

Pool Features: Association,Heated

Security Features: Closed Circuit Camera(s),Door Man,Security Guard,Smoke Detector(s)

Architectural Style: High Rise

Construction Materials: Block

Cooling Y/N: 1

Flooring: Tile

Garage Y/N: 1

Heating Y/N: 1

View: Bay,River

Entry Level: 28

Patio and Porch Features:

Balcony,Deck,Open,Patio

Waterfront Y/N: 1

Stories Total: 50

Interior Features: Dual Sinks,High Ceilings,Living/Dining Room,Other,Separate Shower,Vaulted Ceiling(s),Elevator

Waterfront Features: Bay Front,River Front,Seawall

Parking Features: Attached,Garage,Valet

Appliances: Built-In Oven,Dryer,Dishwasher,Electric Water Heater,Disposal,Microwave,Refrigerator,Washer

Association Amenities: Cabana,Elevator(s),Pool,Spa/Hot Tub

Cooling: Electric

Covered Spaces: 1

Garage Spaces: 1

Heating: Electric

Pets Allowed: Dogs OK,Yes

View Y/N: 1

Entry Location: 28

Property Attached Y/N: 1

Attached Garage Y/N: 1

Rooms & Units Description

Unit Number: 2804



Location Details

County Or Parish: Miami-Dade County

Fees & Taxes

Tax Annual Amount: 12734

Tax Year: 2023

Tax Legal Description: ICON BRICKELL
CONDO NO 3 UNIT 2804 UNDIV 0.19%
INT IN COMMON ELEMENTS OFF REC
26751-0510

Association Fee: 2039

Association Fee Frequency: Monthly

Association Fee Includes: Common
Areas, Parking, Pool(s), Recreation
Facilities, Security, Trash, Water

Miscellaneous

Public Survey Township: 1

**Public
Survey
Section:** 38

Syndication Remarks: Rarely available 2/2 Corner Unit with unique 16 feet
Double-Height Ceilings, offering stunning Bay and river Views. airbnb, Short-Term
Rentals Allowed

**Year Built
Details:**
Resale

Virtual Tour URL: <https://www.propertypanorama.com/instaview/mia/A11571740>

Courtesy of

Office Name: Love Pop Residential

