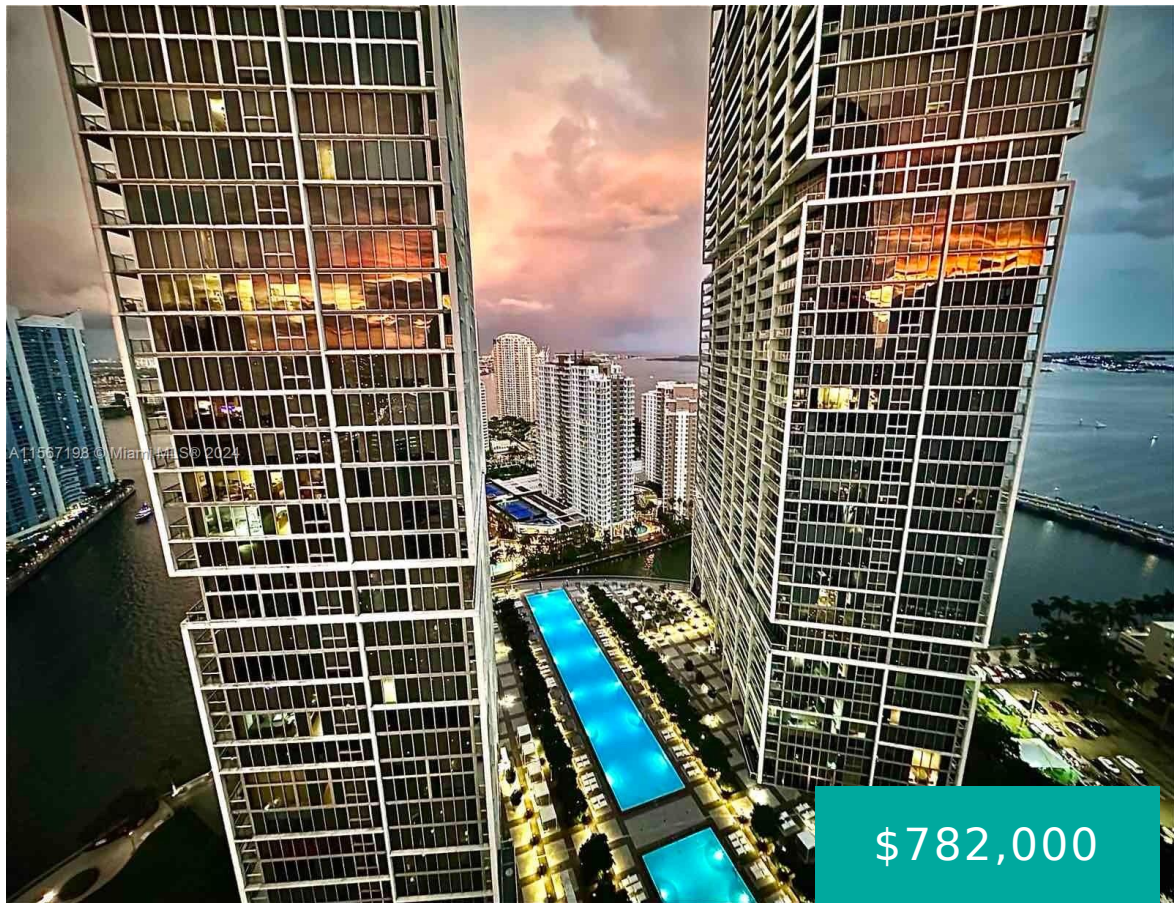
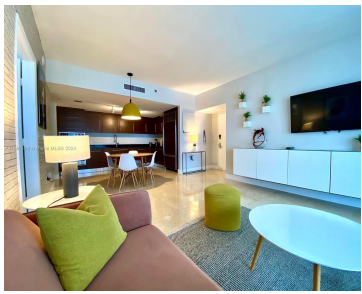


485 BRICKELL AVE 3501 MIAMI FL 33131

<https://www.cays.com>



\$782,000



Investors dream with bay views from the best 01 line and 35th floor of Icon Brickell III. Short term rentals approved. Bright & spacious property fully renovated in 2019 by interior designer and fully equipped with a full-size washer/dryer, Italian cabinets, premium appliances by Wolf & Subzero and Bosch, as well as solid black granite, [...]

- 1 bed
- 1 bath
- Condominium
- Residential
- Active
- 898 sq ft

Basics

Bathrooms Full: 1
Category: Residential
Status: Active
Bathrooms: 1 bath
Year built: 2009

Lot Size Units: Square Feet
Type: Condominium
Bedrooms: 1 bed
Area: 898 sq ft



Property details

Total Building Area: 898

Subdivision Name: ICON BRICKELL CONDO NO 3

Parcel Number: 01-41-38-149-1680 **Possession:** Negotiable

Property Features

Exterior Features:

Balcony,Security/High Impact Doors

Waterfront Features: Bay Front

Pool Features: Association

Security Features: Elevator Secured,Lobby Secured,Smoke Detector(s)

Architectural Style: High Rise

Construction Materials: Other

Cooling Y/N: 1

Flooring: Ceramic Tile

Garage Spaces: 1

Heating: Central

Pets Allowed: Conditional,Yes

View Y/N: 1

Entry Location: 35

Waterfront Y/N: 1

Utilities: Cable Available

Interior Features: Bedroom on Main Level,Kitchen Island

Window Features: Impact Glass

Parking Features: One Space,Valet

Appliances: Built-In Oven,Dryer,Dishwasher,Electric Range,Disposal,Microwave,Refrigerator,Self Cleaning Oven,Washer

Association Amenities: Fitness Center,Other,Pool,Spa/Hot Tub,Elevator(s)

Cooling: Central Air

Covered Spaces: 1

Furnished: Furnished

Garage Y/N: 1

Heating Y/N: 1

View: Bay,Pool

Entry Level: 35

Patio and Porch Features: Balcony,Open

Stories Total: 50

Rooms & Units Description

Unit Number: 3501



Location Details

County Or Parish: Miami-Dade County

Directions: use Gps

Fees & Taxes

Tax Annual Amount: 7647

Tax Year: 2023

Tax Legal Description: ICON
BRICKELL CONDO NO 3 UNIT 3501
UNDIV 0.13% INT IN COMMON
ELEMENTS OFF REC 26751-0510

Association Fee: 1250

Association Fee Frequency: Monthly

Association Fee Includes: Amenities,Cable
TV,HVAC,Sewer,Security,Trash,Water

Miscellaneous

Public Survey Township: 1

**Public Survey
Section:** 38

Syndication Remarks: nvestors dream with bay views from the best 01 line
and 35th floor of Icon Brickell III. Short term rentals approved. Fully renovated.

**Year Built
Details:** Condo-
Hotel

Virtual Tour URL:

<https://www.propertypanorama.com/instaview/mia/A11567198>

Courtesy of

Office Name: Withal Realty Corp

