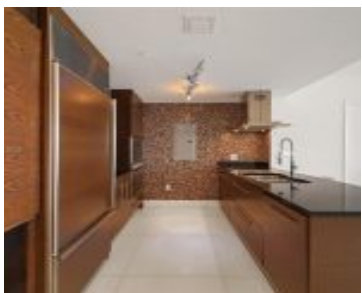


495 BRICKELL AVE MIAMI FL 33131 495 BRICKELL AVE 402

<https://www.cays.com>



ICON BRICKELL NO TWO CONDO UNIT 402 UNDIV 0.23% INT IN COMMON ELEMENTS OFF REC 27065-4397 *FURNISHED* Life is reminiscent of an ink pad, with home the woodcut stamp. Together, they create your mark, your slice of Miami central. Fill in the design with your experiences, coloring your world with a glorious journey and unique [...]

- 2 beds
- 2, 2 baths
- Condominium, Residential
- Condominium, Residential
- Active
- 1505 sq ft

Basics



Category: Condominium, Residential
Status: Active
Bathrooms: 2, 2 baths
Floors: 57 floors
Year built: 2009
Subdivision Name: ICON BRICKELL NO TWO

Type: Condominium, Residential
Bedrooms: 2 beds
Half baths: 0 half baths
Area: 1505 sq ft
View: Canal
County: Miami-Dade

Property details

Subdivision Name: ICON BRICKELL NO TWO

Parcel Number: 33131

Property Features

Waterfront Features:
CanalFront

Cooling: CentralAir,Electric

Garage Y/N: 1

Heating Y/N: 1

View: Canal

Waterfront Y/N: 1

Parking Features:
Assigned,Attached,Garage,OneSpace,Valet

Cooling Y/N: 1

Heating: Central,Electric

Pets Allowed: Conditional,Yes

View Y/N: 1

Stories Total: 57

Rooms & Units Description

Unit Number: 402

Location Details

County Or Parish: Miami-Dade



Building Details

Architectural Style: HighRise

Covered Spaces: 1

Floor covering: Other

Construction Materials: Block

Garage Spaces: 1

Amenities & Features

Pool Features: Association,Heated

Security Features: ClosedCircuitCameras,SecuredGarageParking,LobbySecured

Association Amenities: BilliardRoom,BusinessCenter,Clubhouse,FitnessCenter,Pool,Sauna,SpaHotTub

Utilities: CableAvailable

Exterior Features: Balcony,SecurityHighImpactDoors

Interior Features: ClosetCabinetry,Other

Parking Features: Assigned,Attached,Garage,OneSpace,Valet

Patio & Porch Features: Balcony,Open

Waterfront Features: CanalFront

Cooling: CentralAir,Electric

Heating: Central,Electric

Appliances: Dryer,Dishwasher,ElectricRange,IceMaker,Microwave,SelfCleaningOven,Washer

Expenses, Fees & Taxes

Association Fee: \$1,247

Tax Year: 2022

Tax Annual Amount: \$12,719

Fees & Taxes

Association Fee: 1247

Miscellaneous

Association Fee Frequency: Monthly **List Office Name:** MPGA Family Office Brokerage LLC

Listing Terms: Cash,Conventional

Miscellaneous



Above **Virtual Tour URL:**

Grade <https://www.zillow.com/view-3d-home/08a9b010-1995-42c8-b039-32bf6f6fea69?setAttribution=mls&wl=true>

Finished

Area:

Miami, FL

Courtesy of

Office Name: MPGA Family Office Brokerage LLC

