

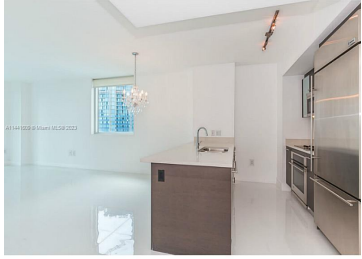
500 BRICKELL AV 2910 MIAMI FL 33131

<https://www.cays.com>



\$795,000

SOPHISTICATED AND CONTEMPORARY DEFINE THIS AMPLE AND LUMINOUS UNIT LOCATED IN 500 BRICKELL. A SOARING 43-STORY LUXURY TOWER IN THE CENTER OF IT ALL. THIS ENTIRE UNFURNISHED 2 BED/2 BATH UNIT FEATURES GRANITE COUNTERTOP KITCHEN ISLAND, CUSTOM DARK WOOD CABINETS, AND DELUXE APPLIANCES. UPGRADED AND AMPLE BATHROOMS. EXQUISITE ITALIAN PORCELLANATO FLOORS FLOW BEAUTIFULLY THROUGHOUT THE [...]



- 2 beds
- 2 baths
- Condominium
- Residential
- Active
- 1197 sq ft

Basics



Bathrooms Full: 2

Category: Residential

Status: Active

Bathrooms: 2 baths

Year built: 2008

Lot Size Units: Square Feet

Type: Condominium

Bedrooms: 2 beds

Area: 1197 sq ft

Property details

Direction Faces: North

Subdivision Name: 500 BRICKELL EAST

Possession: Closing & Funding

Disclosures: Owner Is Listing Agent

Parcel Number: 01-41-38-144-3040

Property Features



Exterior Features: Balcony

Laundry Features: Washer Hookup,Dryer Hookup

Pool Features: Association,Heated

Security Features: Door Man,Elevator Secured,Key Card Entry,Smoke Detector(s)

Architectural Style: High Rise

Construction Materials: Block

Cooling Y/N: 1

Flooring: Ceramic Tile,Tile

Garage Spaces: 1

Heating: Electric

Pets Allowed: Conditional,Yes

View Y/N: 1

Entry Location: 29

Property Attached Y/N: 1

Stories Total: 43

Interior Features: Dual Sinks,Jetted Tub,Living/Dining Room,Separate Shower,Walk-In Closet(s),Elevator

Window Features: Blinds,Impact Glass

Parking Features: Assigned,Attached,Covered,Garage,One Space

Appliances: Dryer,Dishwasher,Electric Range,Electric Water Heater,Disposal,Ice Maker,Microwave,Refrigerator,Washer

Association Amenities: Clubhouse,Fitness Center,Other,Pool,Elevator(s)

Cooling: Electric

Covered Spaces: 1

Furnished: Unfurnished

Garage Y/N: 1

Heating Y/N: 1

View: City,River,Water

Entry Level: 29

Patio and Porch Features: Balcony,Open

Attached Garage Y/N: 1

Utilities: Cable Available

Rooms & Units Description

Unit Number: 2910

Location Details

County Or Parish: Miami-Dade County

Directions: BRICKELL AVENUE, BETWEEN 5TH AND 6TH. ENTRANCE TO VALET ON 6TH STREET.

Fees & Taxes



Tax Annual Amount: 7658

Tax Year: 2022

Tax Legal Description: 500
BRICKELL EAST CONDOUNIT 2910
UNIDV 0.36811% INT IN COMMON
ELEMENTS OFF

Association Fee: 831

Association Fee Frequency:
Monthly

Association Fee Includes: Association
Management,Cable TV,Hot
Water,Parking,Pool(s),Recreation
Facilities,Sewer,Security,Trash,Water

Miscellaneous

Public Survey Township: 1

**Public Survey
Section:** 38

Syndication Remarks: UNFURNISHED 2B/2B IN SOPHISTICATED AND
CONTEMPORARY 500 BRICKELL CONDO IN BRICKELL. CLOSE TO VIBRANT
BRICKELL CITY CENTER, SHOPPING AREAS, AND METRO!

**Year Built
Details:** New
Construction

Virtual Tour URL:

<https://www.propertypanorama.com/instaview/mia/A11441609>

Courtesy of

Office Name: The Keyes Company

