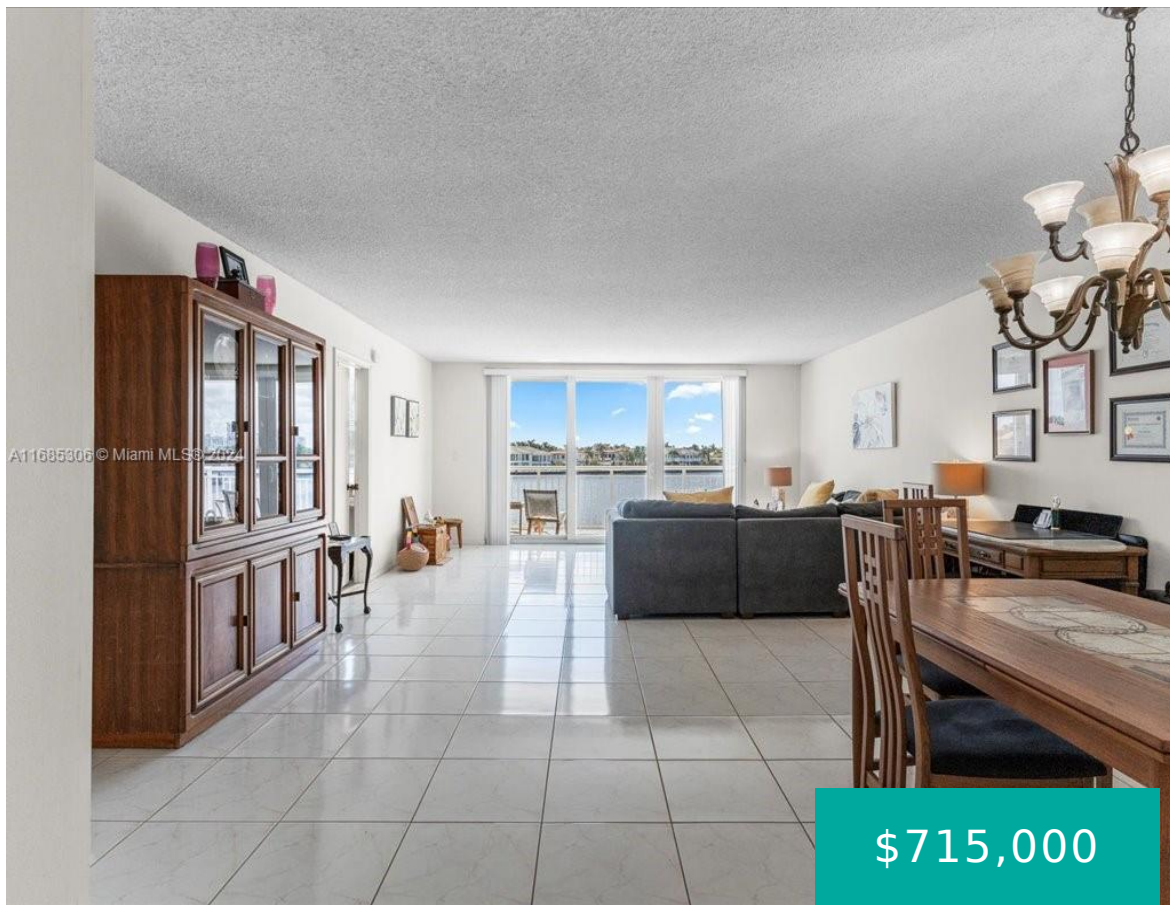


511 BAYSHORE DR FORT LAUDERDALE FL 33304 511 BAYSHORE DR 309

<https://www.cays.com>



BAYSHORE TOWERS OF FT LAUDERDALE INC CONDO UNIT 309 PER CDO BK/PG: 4791/287 Discover a serene escape with a private balcony offering breathtaking views of the Intracoastal Waterway. This spacious residence features an open layout, walk-in closets, and an unbeatable location three blocks from the beach. Experience Fort Lauderdale's finest with world-class dining, nightlife, and [...]

- 2 beds
- 2, 2 baths
- Condominium, Residential
- Condominium, Residential
- Active
- 1330 sq ft

Basics



Category: Condominium, Residential
Status: Active
Bathrooms: 2, 2 baths
Floors: 12 floors
Year built: 1971
Subdivision Name: BAYSHORE TOWERS

Type: Condominium, Residential
Bedrooms: 2 beds
Half baths: 0 half baths
Area: 1330 sq ft
View: Intercoastal
County: Broward

Property details

Subdivision Name: BAYSHORE TOWERS

Parcel Number: 33304

Property Features

Building Features: ExteriorLighting

Waterfront Features: IntracoastalAccess

Parking Features: Assigned,Guest,OneSpace

Cooling: CentralAir

Cooling Y/N: 1

Garage Y/N: 1

Heating: Central

Heating Y/N: 1

Pets Allowed: No

View: Intercoastal

Waterfront Y/N: 1

Stories Total: 12

Rooms & Units Description

Unit Number: 309

Location Details

County Or Parish:
Broward

Directions: 595 East to exit 12B onto US-1 N toward Ft Lauderdale.
Follow US-1 N, SE 17th St and Florida A1A N to Bayshore Dr.



Building Details

Architectural Style: HighRise

Covered Spaces: 1

Floor covering: Carpet, Tile

Construction Materials: Block

Garage Spaces: 1

Amenities & Features

Pool Features: Association

Security Features: ClosedCircuitCameras,SecuredGarageParking,KeyCardEntry,LobbySecured,SecurityGuard,SmokeDetectors

Association Amenities:

BoatDock,BilliardRoom,Clubhouse,CommunityKitchen,FitnessCenter,Laundry,Library,Barbecue,PicnicArea,Pool,Storage,Elevators

Window Features: ImpactGlass

Exterior Features: Balcony,Barbecue,Patio

Features: ExteriorLighting

Laundry Features: CommonArea

Parking Features: Assigned,Guest,OneSpace

Patio & Porch Features: Balcony,Open,Patio

Waterfront Features: IntracoastalAccess

Cooling: CentralAir

Heating: Central

Interior Features: DualSinks,WalkInClosets,Elevator

Appliances:

Dishwasher,ElectricRange,ElectricWaterHeater,Disposal,Microwave,Refrigerator

Expenses, Fees & Taxes

Association Fee: \$1,168

Tax Year: 2024

Tax Annual Amount: \$5,451

Fees & Taxes

Association Fee: 1168

Miscellaneous

Association Fee Frequency: Monthly

Listing Terms: Cash,Conventional,FHA,VaLoan

List Office Name: Douglas Elliman

Direction Faces: South

Miscellaneous



Above Grade
Finished Area:
Fort Lauderdale, FL

Virtual Tour URL:
<https://www.propertypanorama.com/instaview/mia/A11685306>

Courtesy of

Office Name: Douglas Elliman

