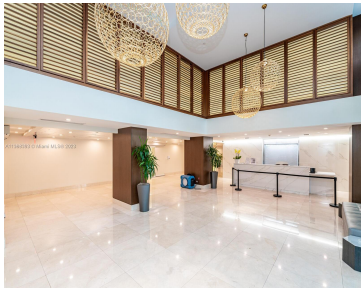


# 540 BRICKELL KEY DR 1413 MIAMI FL 33131

<https://www.cays.com>



**\$999,000**



Spectacular Waterfront 3 Bed/3 Bath Corner unit with 2 Assigned Parking Spaces in the exclusive island of Brickell Key. Abundance of Natural Light with stunning Bay, Ocean and City views from the 2 Open Balconies. Unit has 2 of the Bedrooms with En Suite bathrooms & Walk in Closets. Brickell Key II offers 5 Star [...]

- 3 beds
- 3 baths
- Condominium
- Residential
- Active
- 1560 sq ft

## Basics

**Bathrooms Full:** 3  
**Category:** Residential  
**Status:** Active  
**Bathrooms:** 3 baths  
**Year built:** 1991

**Lot Size Units:** Square Feet  
**Type:** Condominium  
**Bedrooms:** 3 beds  
**Area:** 1560 sq ft



---

## Property details

**Total Building Area:** 1560

**Subdivision Name:** BRICKELL KEY II CONDO

**Parcel Number:** 01-42-06-056-1890

**Possession:** Closing & Funding

---

## Property Features

**Exterior Features:** Balcony

**Interior Features:** Bedroom on Main Level,Entrance Foyer,First Floor Entry,Living/Dining Room,Main Living Area Entry Level,Split Bedrooms,Separate Shower,Walk-In Closet(s)

**Waterfront Features:** Bay Front,Ocean Front

**Pool Features:** Association

**Parking Features:**

Assigned,Attached,Covered,Garage,Two or More Spaces

**Security Features:** Door Man

**Appliances:** Dryer,Dishwasher,Electric Range,Microwave,Refrigerator,Washer

**Architectural Style:** High Rise

**Association Amenities:** Basketball Court,Fitness Center,Barbecue,Picnic Area,Playground,Pool,Sauna,Tennis Court(s),Trash,Elevator(s)

**Construction Materials:** Block

**Cooling:** Central Air

**Cooling Y/N:** 1

**Covered Spaces:** 2

**Flooring:** Tile

**Furnished:** Unfurnished

**Garage Spaces:** 2

**Garage Y/N:** 1

**Heating:** Central

**Heating Y/N:** 1

**Pets Allowed:** Conditional,Yes

**View:** Bay,City,Ocean

**View Y/N:** 1

**Entry Level:** 14

**Entry Location:** 14

**Patio and Porch Features:** Balcony,Open

**Waterfront Y/N:** 1

**Attached Garage Y/N:** 1

**Stories Total:** 18

---

## Rooms & Units Description

**Unit Number:** 1413



---

## Location Details

**County Or Parish:** Miami-Dade County

---

## Fees & Taxes

**Tax Annual Amount:** 11618

**Tax Year:** 2022

**Tax Legal Description:** BRICKELL KEY II CONDO UNIT 1413 UNDIV 0.47191 INT IN COMMON ELEMENTS OFF REC 16363-0778 COC 21469-4962 07 2003 1

**Association Fee:** 1873

**Association Fee Frequency:** Monthly

**Association Fee Includes:** Amenities,Common Areas,Cable TV,Maintenance Grounds,Sewer,Security,Trash,Water

---

## Miscellaneous

**Public Survey Township:** 1

**Public Survey Section:** 6

**Syndication Remarks:** Spectacular Waterfront 3 Bed/3 Bath Corner unit with 2 Assigned Parking Spots in the exclusive island of Brickell Key.

**Year Built Details:** Resale

**Virtual Tour URL:**

<https://tours.sfv.t.us/public/vtour/display?idx=1&mlsId=2&tourId=2114930>

---

## Courtesy of

**Office Name:** Avanti Way Realty LLC

