

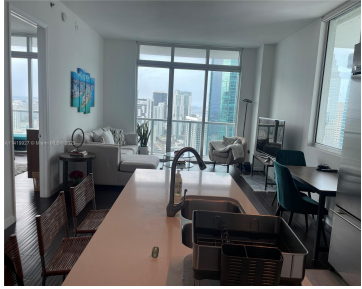
55 SE 6TH ST 4307 MIAMI FL 33131

<https://www.cays.com>



A11419927 © Miami MLS® 2023

\$685,000



Penthouse Corner Unit, Panoramic City, River and Bay views. Higher ceilings. Hardwood floors. Kitchen with quartz counter-tops & stainless steel appliances. Double vanities with marble tops and jacuzzi in master bathroom, glass enclosed showers. Beautiful amenities include 3 pools, spa & gym, club room, sports bar, roof top entertainment room, wine cellar, theater room. Steps [...]

- 1 bed
- 1 bath
- Condominium
- Residential
- Active
- 803 sq ft

Basics

Bathrooms Full: 1
Category: Residential
Status: Active
Bathrooms: 1 bath
Year built: 2008

Lot Size Units: Square Feet
Type: Condominium
Bedrooms: 1 bed
Area: 803 sq ft



Property details

Total Building Area: 803

Subdivision Name: 500 BRICKELL WEST CONDO

Parcel Number: 01-41-38-143-2510 **Possession:** Close Of Escrow

Property Features

Exterior Features:

Barbecue,Courtyard,Deck,Security/High Impact Doors,Patio

Waterfront Features: Bay Front,River Front

Parking Features: Assigned,Covered,One Space

Appliances: Built-In Oven,Dishwasher,Electric Water Heater,Ice Maker,Microwave,Refrigerator

Construction Materials: Block

Cooling Y/N: 1

Flooring: Wood

Garage Y/N: 1

Heating Y/N: 1

View: Bay,River

Entry Level: 43

Patio and Porch Features: Deck,Patio

Waterfront Y/N: 1

Interior Features: Bedroom on Main Level,Elevator

Pool Features: Association

Security Features: Smoke Detector(s)

Association Amenities: Billiard Room,Bike Storage,Business Center,Clubhouse,Fitness Center,Barbecue,Picnic Area,Pool,Sauna,Spa/Hot Tub,Trash,Elevator(s)

Cooling: Central Air

Covered Spaces: 1

Garage Spaces: 1

Heating: Central

Pets Allowed: Size Limit,Yes

View Y/N: 1

Entry Location: 43

Property Attached Y/N: 1

Stories Total: 43

Rooms & Units Description

Unit Number: 4307



Location Details

County Or Parish: Miami-Dade County

Fees & Taxes

Tax Annual Amount: 6051 **Tax Year:** 2022

Tax Legal Description: 500 BRICKELL WEST CONDO
UNIT 4307 UNDIV 0.26013%
INT IN COMMON ELEMENTS
OFF REC 26352-3500

Association Fee: 900

**Association Fee
Frequency:** Monthly

Association Fee Includes: Association
Management,Amenities,Common Areas,Cable
TV,Electricity,HVAC,Hot
Water,Internet,Legal/Accounting,Maintenance
Grounds,Maintenance Structure,Parking,Pest
Control,Pool(s),Recreation Facilities

Miscellaneous

**Public
Survey
Section:** 38

Syndication Remarks: Penthouse Corner Unit, Panoramic City, River and Bay
views. Higher ceilings. Hardwood floors.

**Year Built
Details:**
Resale

Virtual Tour URL:
<https://www.propertypanorama.com/instaview/mia/A11419927>

Courtesy of

Office Name: Lance Winters R.E. Broker

