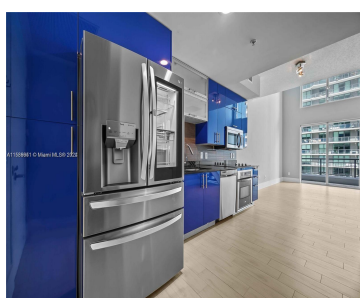
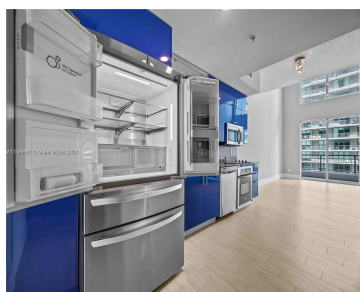
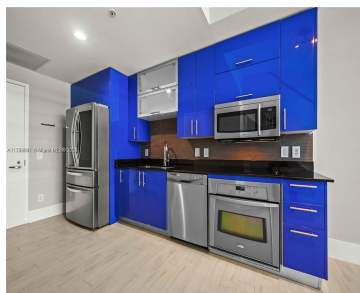
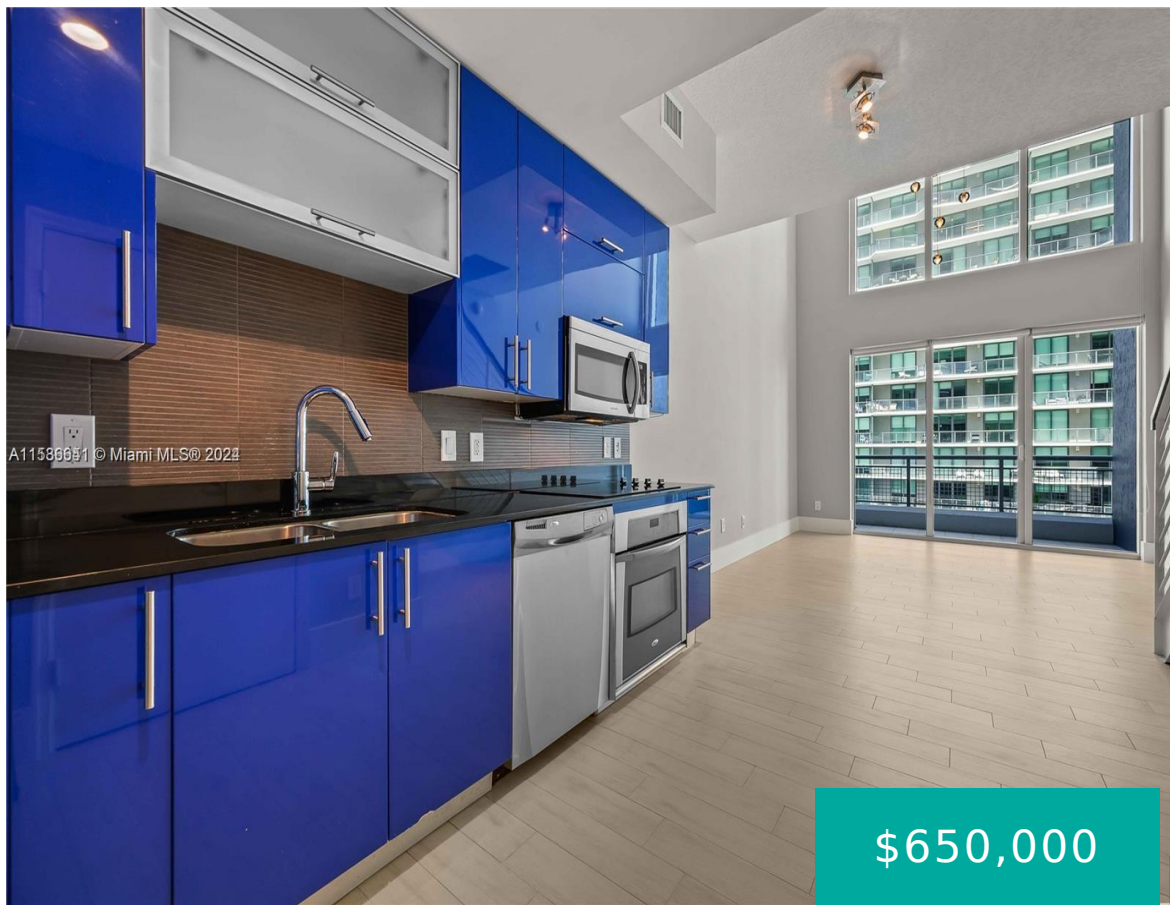


60 SW 13TH ST 3620 MIAMI FL 33130

<https://www.cays.com>



Sharp and sophisticated two-bedroom unit available at Infinity at Brickell. Located in the heart of Brickell. This “flow through” unit features dynamic eastern views of Biscayne Bay, while the upstairs bedroom enjoys majestic western views of Miami in all of its magic majesty. Unit has recently been equipped with state of the state of the [...]

- 2 beds
- 3 baths
- Condominium
- Residential
- Active
- 1298 sq ft

Basics

Bathrooms Half: 1
Lot Size Units: Square Feet
Type: Condominium
Bedrooms: 2 beds
Area: 1298 sq ft

Bathrooms Full: 2
Category: Residential
Status: Active
Bathrooms: 3 baths
Year built: 2008



Property details

Total Building Area: 1452

Subdivision Name: INFINITY AT BRICKELL COND

Parcel Number: 01-41-39-116-3950 **Possession:** Subject To Tenant Rights

Property Features

Exterior Features:
Security/High Impact Doors

Interior Features: Upper Level Primary,Bar

Pool Features: Association

Parking Features: Covered,One Space,Valet

Security Features: Elevator Secured,Lobby Secured,Security Guard

Appliances: Dryer,Dishwasher,Electric Range,Disposal,Microwave,Refrigerator,Self Cleaning Oven,Washer

Architectural Style: High Rise

Association Amenities: Business Center,Clubhouse,Community Kitchen,Fitness Center,Other,Pool,Sauna,Spa/Hot Tub,Elevator(s)

Construction Materials:
Block

Cooling: Central Air

Cooling Y/N: 1

Covered Spaces: 1

Flooring: Tile

Garage Spaces: 1

Garage Y/N: 1

Heating: Central

Heating Y/N: 1

Pets Allowed: Conditional,Yes

View: Bay

View Y/N: 1

Entry Level: 36

Entry Location: 36

Property Attached Y/N: 1

Stories Total: 52

Rooms & Units Description

Unit Number: 3620

Location Details



Fees & Taxes

Tax Annual Amount: 9210

Tax Year: 2023

Tax Legal Description:
INFINITY AT
BRICKELL
CONDO UNIT
3620 UNDIV
0.2637% INT IN
COMMON
ELEMENTS OFF
REC 26630-2293

Association Fee: 1377

Association Fee Frequency:
Monthly

Association Fee Includes: Association Management,Amenities,Insurance,Internet,Legal/Accounting,Maintenance Grounds,Maintenance Structure,Parking,Pest Control,Pool(s),Recreation Facilities,Reserve Fund,Sewer,Security,Trash,Water

Miscellaneous

Public Survey Township: 1

Public Survey Section: 39

Syndication Remarks: Sharp and sophisticated two-bedroom unit available at Infinity at Brickell.

Year Built Details:
Resale

Virtual Tour URL:
<https://www.propertypanorama.com/instaview/mia/A11536641>

Courtesy of

Office Name: Florida Capital Realty

