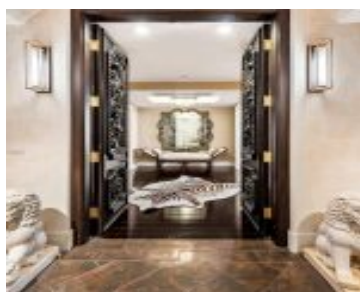


# 6000 ISLAND BLVD AVENTURA FL 33160 6000 ISLAND BLVD 1201

<https://www.cays.com>



BELLAMARE @ WILLIAMS ISLAND CONDO UNIT 1201 UNDIV 0.6371% INT IN COMMON ELEMENTS OFF REC 23661-4229 COC 25632-0419 04 2007 1  
Indulge in ultimate luxury and privacy at Williams Island's Bella Mare. This stunning 5-bedroom, 5.5-bathroom apartment spans over 4,400 sq ft. Enter directly from the elevator into your private foyer through hand-carved French chateau [...]

- 5 beds
- 5, 6 baths
- Condominium, Residential
- Condominium, Residential
- Active
- 4435 sq ft

## Basics



**Bathrooms Half:** 1

**Type:** Condominium, Residential

**Bedrooms:** 5 beds

**Half baths:** 1 half bath

**Area:** 4435 sq ft

**View:** City, Intercoastal, Ocean, TennisCourt

**County:** Miami-Dade

**Category:** Condominium, Residential

**Status:** Active

**Bathrooms:** 5, 6 baths

**Floors:** 30 floors

**Year built:** 2005

**Subdivision Name:** BELLAMARE @ WILLIAMS ISLA

---

## Property details

**Subdivision Name:** BELLAMARE @ WILLIAMS ISLA

**Parcel Number:** 33160

---

## Property Features

**Waterfront Features:** IntracoastalAccess

**Parking Features:** OneSpace, Valet

**Cooling:** CentralAir, CeilingFans

**Cooling Y/N:** 1

**Garage Y/N:** 1

**Heating:** Central

**Heating Y/N:** 1

**Pets Allowed:** Conditional, Yes

**View:** City, Intercoastal, Ocean, TennisCourt

**View Y/N:** 1

**Waterfront Y/N:** 1

**Stories Total:** 30

---

## Rooms & Units Description

**Unit Number:** 1201

---

## Location Details

**County Or Parish:** Miami-Dade



---

# Building Details

**Architectural Style:** HighRise

**Covered Spaces:** 1

**Floor covering:** Wood

**Construction Materials:** Block

**Garage Spaces:** 1

---

## Amenities & Features

**Parking Features:** OneSpace,Valet

**Patio & Porch Features:** Balcony,Open

**Waterfront Features:** IntracoastalAccess

**Cooling:** CentralAir,CeilingFans

**Furnished:** Partially

**Interior Features:**

WetBar,BreakfastBar,BuiltInFeatures,BedroomOnMainLevel,BreakfastArea,ClosetCabinetry,DiningArea,SeparateFormalDiningRoom,DualSinks,EntranceFoyer,FirstFloorEntry,Fireplace,KitchenIsland,Pantry,SeparateShower,Bar,WalkInClosets,Elevator

**Security Features:** ComplexFenced,LobbySecured,PhoneEntry

**Association Amenities:** Elevators

**Window Features:** Blinds

**Exterior Features:** Balcony,SecurityHighImpactDoors

**Heating:** Central

**Appliances:**

BuiltInOven,Dryer,Dishwasher,GasRange,Microwave,Refrigerator,Washer

---

# Expenses, Fees & Taxes

**Association Fee:** \$345

**Tax Annual Amount:** \$20,436

**Tax Year:** 2023

---

# Fees & Taxes

**Association Fee:** 345

---

# Miscellaneous

**Association Fee Frequency:** Monthly

**List Office Name:** Douglas Elliman

**Listing Terms:** Cash,Conventional

**Attribution Contact:** goihmangroup1@gmail.com

---

# Miscellaneous

**Above Grade Finished Area:**

Aventura, FL

**Virtual Tour URL:**

<https://www.zillow.com/view-imx/c76c4e76-08fe-4949-8f62-8b21756e7f05?setAttribution=mls&wl=true&initialViewType=pano>



---

# Courtesy of

**Office Name:** Douglas Elliman

