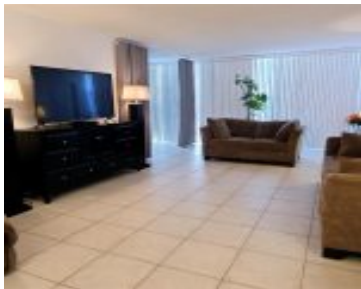


601 THREE ISLANDS BLVD HALLANDALE BEACH FL 33009 601 THREE ISLANDS BLVD 107

<https://www.cays.com>



DESOTO PARK CONDO UNIT 107 BLDG 1 PER CDO BK/PG: 6030/179 SPACIOUS 2 BEDR/2 BATHS CONDO WITH SPACIOUS DEN/OFFICE SPACE, PLENTY OF CLOSET SPACE, STORAGE BIN, UPDATED KITCHEN, LARGE BATHS, FLOOR-TO-CEILING WINDOWS ALLOW ABUNDANT NATURAL LIGHT, AND TWO BALCONIES PROVIDE ADDITIONAL OUTDOOR SPACE. ENJOY THE FANTASTIC AMENITIES OF DESOTO PARK, INCLUDING A WATERFRONT POOL, GYM, [...]

- 2 beds
- 2, 2 baths
- Condominium, Residential
- Condominium, Residential
- Active
- 1210 sq ft

Basics



Category: Condominium, Residential
Status: Active
Bathrooms: 2, 2 baths
Floors: 5 floors
Year built: 1975
Subdivision Name: DESOTO PARK CONDO

Type: Condominium, Residential
Bedrooms: 2 beds
Half baths: 0 half baths
Area: 1210 sq ft
View: Canal,Garden,Water
County: Broward

Property details

Subdivision Name: DESOTO PARK CONDO

Parcel Number: 33009

Property Features

Waterfront Features:
CanalAccess,CanalFront

Carport Y/N: 1

Cooling Y/N: 1

Heating: Central,Electric

Pets Allowed: Conditional,Yes

View Y/N: 1

Stories Total: 5

Parking Features:
Assigned,DetachedCarport,OneSpace

Cooling: CentralAir,CeilingFans

Garage Y/N: 1

Heating Y/N: 1

View: Canal,Garden,Water

Waterfront Y/N: 1

Rooms & Units Description

Unit Number: 107

Location Details



County Or Parish:
Broward

Directions: FROM I95 GO EAST, TURN LEFT ON THREE ISLANDS BLVD. AFTER THE GATE MAKE A LEFT TO ENTER TO THE COMPLEX, BUILDING 601 IS NEXT TO THE CANAL, LEFT TO THE TENNIS COURTS.

High School: Hallandale High

Building Details

Construction Materials: Block

Covered Spaces: 2

Garage Spaces: 1

Floor covering: Carpet, CeramicTile, Tile

Amenities & Features

Pool Features: Association,Heated

Security Features: FireAlarm,Intercom,KeyCardEntry

Accessibility Features: AccessibleElevatorInstalled,Other

Waterfront Features: CanalAccess,CanalFront

Window Features: Blinds

Electric: Fuses

Furnished: Furnished

Interior Features:

BedroomOnMainLevel,BreakfastArea,FamilyDiningRoom,FirstFloorEntry,HandicapAccess,LivingDiningRoom,MainLivingAreaEntryLevel,SeparateShower,TubShower,Elevator

Appliances: Dryer,Dishwasher,ElectricRange,Disposal,IceMaker,Microwave,Refrigerator,TrashCompactor,Washer

Parking Features: Assigned,DetachedCarport,OneSpace

Patio & Porch Features: Balcony,Open

Association Amenities: Clubhouse,Laundry,Pool,Storage,TennisCourts,Trash,Elevators

Utilities: CableAvailable

Cooling: CentralAir,CeilingFans

Exterior Features: Awnings,Balcony,SecurityHighImpactDoors

Heating: Central,Electric

Laundry Features: CommonArea

Nearby Schools

High School: Hallandale High

Expenses, Fees & Taxes

Association Fee: \$824

Tax Annual Amount: \$4,726

Tax Year: 2023

Fees & Taxes

Association Fee: 824



Miscellaneous

Association Fee Frequency: Monthly

List Office Name: Vera Realty
LLC

Listing Terms: Assumable,Cash,Conventional,Cryptocurrency

Miscellaneous

Above Grade

Finished Area:
Hallandale Beach,
FL

Virtual Tour URL:

<https://www.propertypanorama.com/instaview/mia/A11691131>

Courtesy of

Office Name: Vera Realty LLC

