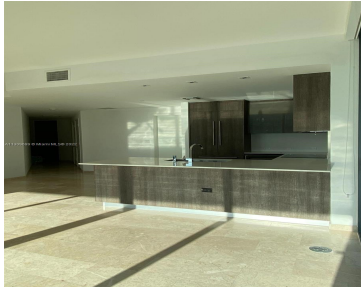
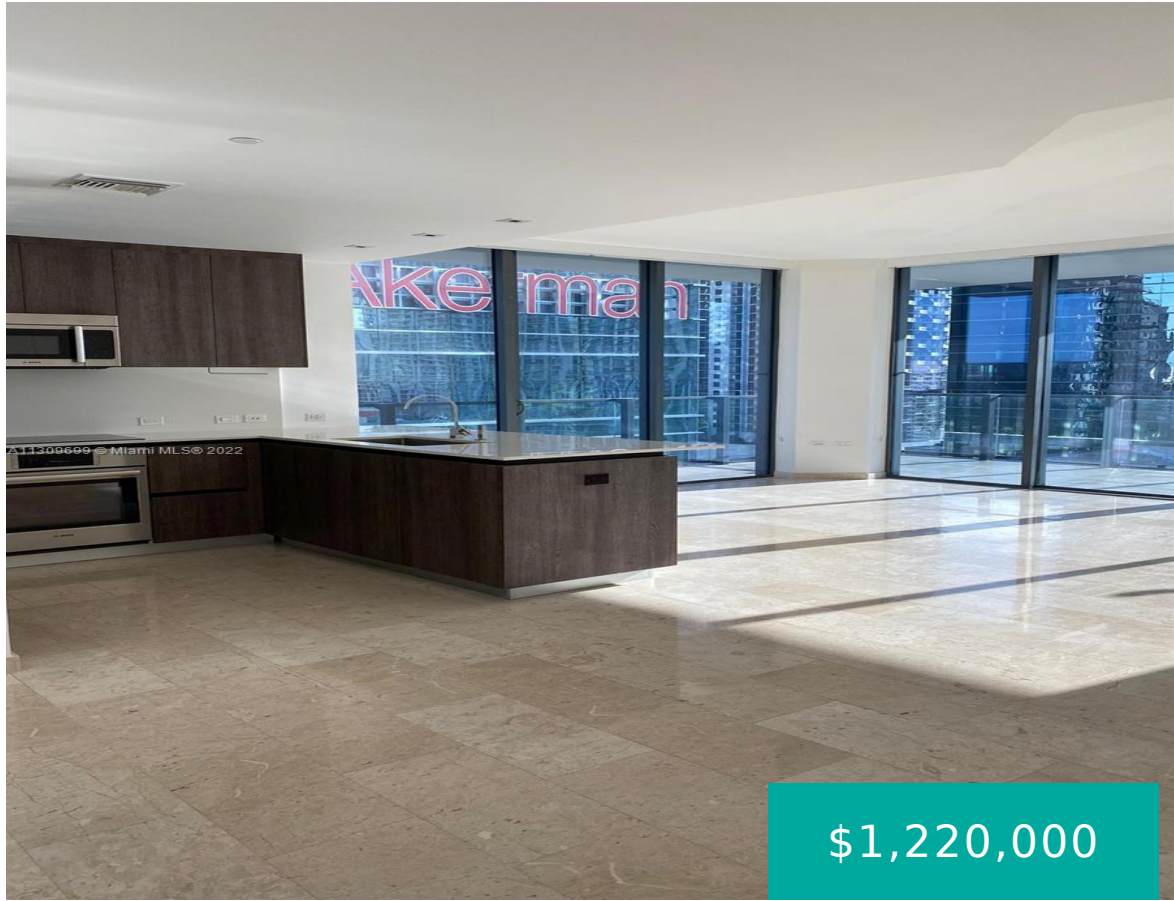


68 SE 6TH ST 1402 MIAMI FL 33131

https://www.cays.com



Reach Residences at Brickell City Center includes an elite collection of gorgeous units featuring soaring ceilings, floor to ceiling sliding glass doors, a half-acre amenity deck, interior elegance from the lobby to the units make this building unique for the ultra-luxury connoisseur. This 2 bedroom/2.5 bathroom , CORNER UNIT ! TENEANT OCCUPAY NON DISTURBE 24 [...]

- 2 beds
- 3 baths
- Condominium
- Residential
- Active
- 1265 sq ft

## Basics

**Bathrooms Half:** 1

**Lot Size Units:** Square Feet

**Type:** Condominium

**Bedrooms:** 2 beds

**Area:** 1265 sq ft

**Bathrooms Full:** 2

**Category:** Residential

**Status:** Active

**Bathrooms:** 3 baths

**Year built:** 2016



---

## Property details

**Total Building Area:** 1265

**Parcel Number:** 01-41-38-167-0590

**Subdivision Name:** REACH CONDO

**Possession:** Closing & Funding

---

## Property Features

**Exterior Features:** Balcony,Barbecue,Fence

**Waterfront Features:** River Front

**Parking Features:** Assigned,One Space

**Appliances:** Dryer,Dishwasher,Electric Range,Electric Water Heater,Disposal,Ice Maker,Microwave,Refrigerator,Trash Compactor,Washer

**Construction Materials:** Block

**Cooling Y/N:** 1

**Flooring:** Marble

**Garage Y/N:** 1

**Heating Y/N:** 1

**View:** River

**Entry Level:** 14

**Patio and Porch Features:** Balcony,Open

**Interior Features:** Breakfast Area,Closet Cabinetry,Eat-in Kitchen,First Floor Entry,Kitchen Island,Living/Dining Room

**Window Features:** Blinds

**Security Features:** Smoke Detector(s)

**Association Amenities:** Clubhouse

**Cooling:** Central Air

**Covered Spaces:** 1

**Garage Spaces:** 1

**Heating:** Central

**Pets Allowed:** Size Limit,Yes

**View Y/N:** 1

**Entry Location:** 14

**Waterfront Y/N:** 1

---

## Rooms & Units Description

**Unit Number:** 1402

---

## Location Details



---

## Fees & Taxes

**Tax Annual Amount:** 12477

**Tax Year:** 2021

**Tax Legal Description:** REACH CONDO UNIT 1402  
UNDIV 0.1454 % INT IN COMMON ELEMENTS OFF  
REC 29907-4814

**Association Fee:** 1134

**Association Fee Frequency:** Monthly

**Association Fee Includes:** Cable  
TV,Sewer,Trash,Water

---

## Miscellaneous

**Public Survey Township:** 19

**Public  
Survey  
Section:** 38

**Syndication Remarks:** This 2 bedroom/2.5 bathroom , CORNER UNIT ! TENEANT  
OCCUPAY NON DISTURBE 24 NOTIFY APPR REQUIERED AND PROF OF FUNDS FOR  
SHOWING.

**Year Built  
Details:**  
Resale

**Virtual Tour URL:** <https://www.propertypanorama.com/instaview/mia/A11309699>

---

## Courtesy of

**Office Name:** Interinvestments Realty, Inc.

