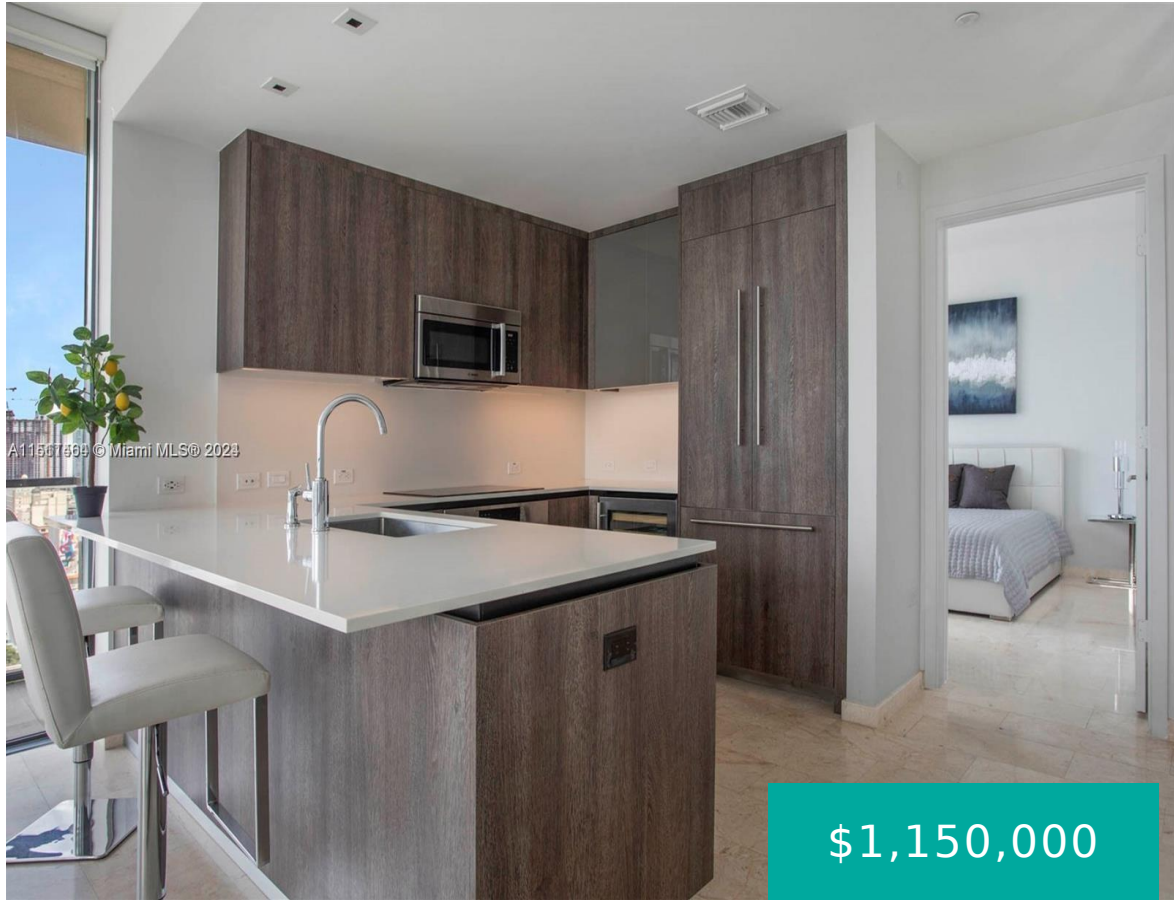
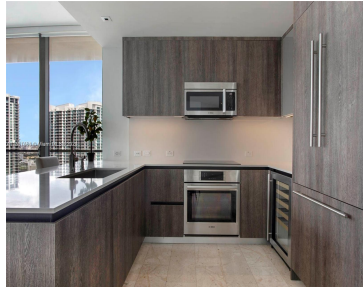


68 SE 6TH ST 2412 MIAMI FL 33131

<https://www.cays.com>



\$1,150,000



Turnkey fully furnished! The most desirable line at REACH. Corner unit with panoramic water and city views. This two-bedroom 3 bath unit had modern kitchen appliances, 36" refrigerator, wine cooler, washer & dryer, prewired for high-speed data, state of the art amenities and walking distance to major shopping center, restaurants & so much more. Direct [...]

- 2 beds
- 3 baths
- Condominium
- Residential
- Active
- 1265 sq ft

Basics

Bathrooms Half: 1

Lot Size Units: Square Feet

Type: Condominium

Bedrooms: 2 beds

Area: 1265 sq ft

Bathrooms Full: 2

Category: Residential

Status: Active

Bathrooms: 3 baths

Year built: 2016



Property details

Total Building Area: 1265

Parcel Number: 01-41-38-167-1890

Subdivision Name: REACH CONDO

Possession: Closing & Funding

Property Features

Exterior Features: Balcony,Security/High Impact Doors

Laundry Features: Washer Hookup,Dryer Hookup

Parking Features: Covered,Detached,Electric Vehicle Charging Station(s),Garage,One Space,Valet

Appliances: Dryer,Dishwasher,Electric Range,Electric Water Heater,Ice Maker,Microwave,Refrigerator,Self Cleaning Oven,Trash Compactor,Washer

Association Amenities: Business Center,Clubhouse,Community Kitchen,Fitness Center,Barbecue,Picnic Area,Playground,Pool,Sauna,Spa/Hot Tub,Trash

Cooling: Central Air,Electric

Covered Spaces: 1

Flooring: Ceramic Tile

Garage Y/N: 1

Heating Y/N: 1

View: Bay,City

Entry Level: 24

Patio and Porch Features: Balcony,Open

Stories Total: 43

Interior Features: Bedroom on Main Level,Elevator,First Floor Entry,Kitchen Island,Living/Dining Room,Walk-In Closet(s)

Pool Features: Association,Heated

Security Features: Elevator Secured,Key Card Entry,Lobby Secured,Smoke Detector(s)

Architectural Style: High Rise

Construction Materials: Block

Cooling Y/N: 1

Electric: Fuses

Garage Spaces: 1

Heating: Central,Electric

Pets Allowed: Conditional,Yes

View Y/N: 1

Entry Location: 24

Property Attached Y/N: 1

Rooms & Units Description



Unit Number: 2412

Location Details

County Or Parish: Miami-Dade County

Fees & Taxes

Tax Annual Amount: 17792

Tax Year: 2023

Tax Legal Description: REACH CONDO UNIT 2412 UNDIV 0.1454 % INT
IN COMMON ELEMENTS OFF REC 29907-4814

**Association Fee
Frequency:** Monthly

Association Fee Includes: Amenities,Pool(s),Sewer,Trash,Water

Miscellaneous

Public Survey Township: 1

**Public
Survey
Section:** 38

Syndication Remarks: Turnkey fully furnished! The most desirable line at REACH. Corner unit with panoramic water and city views. Tenant occupied. See broker remarks.

**Year Built
Details:**
Effective Year
Built

Virtual Tour URL:

<https://www.propertypanorama.com/instaview/mia/A11511464>

Courtesy of

Office Name: Coldwell Banker Realty

