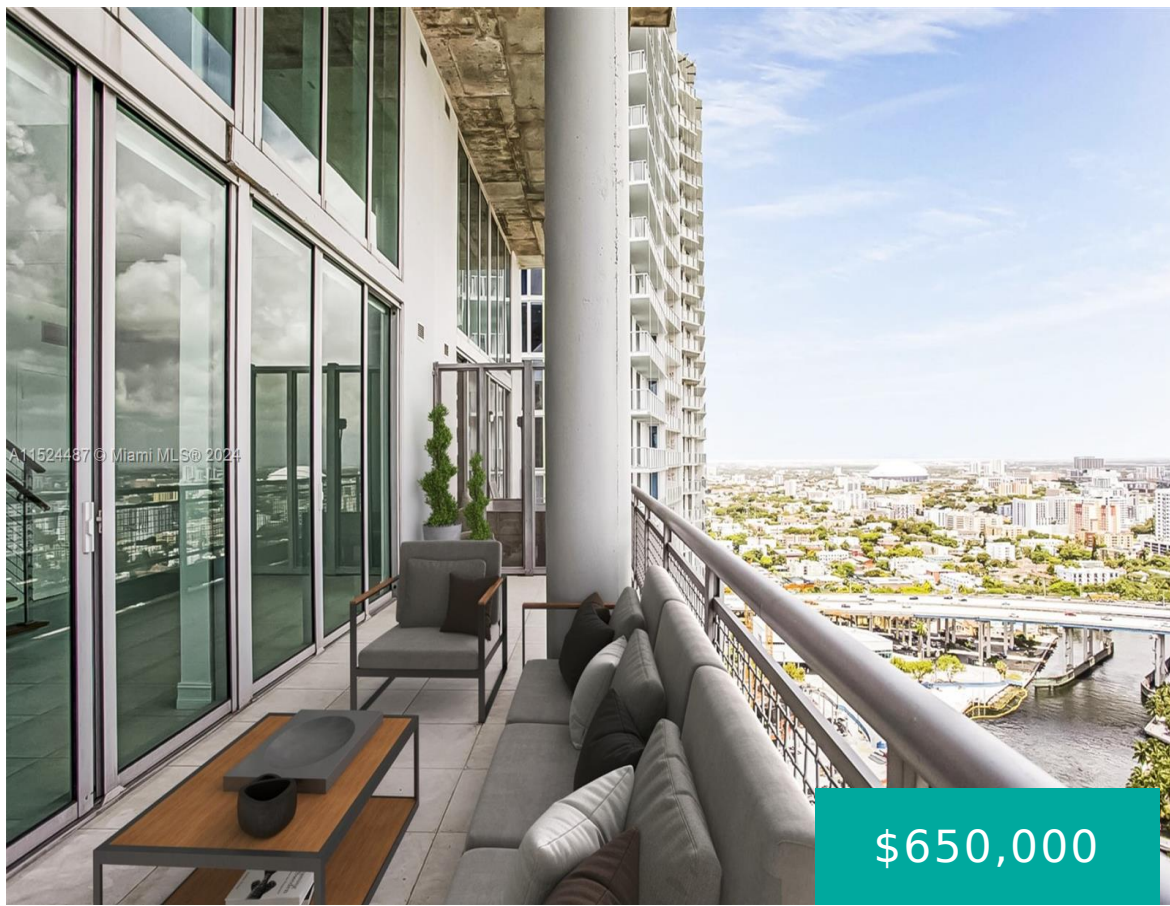
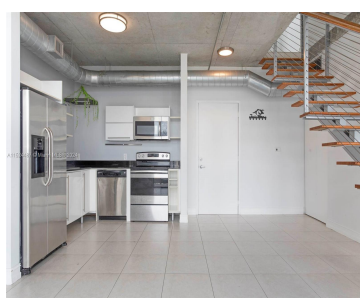


690 SW 1ST CT PHI11 MIAMI FL 33130

<https://www.cays.com>



\$650,000



Opportunity to live in a PH with 20 foot ceilings with DIRECT views to the Miami River & Skyline. Two story open style loft with 2 bedrooms, 2 bathrooms, nice size balcony, italian kitchen cabinetry, washer & dryer in unit & more. Neo Vertika is centrally located in Brickell and offers 24/7 valet & security, [...]

- 2 beds
- 2 baths
- Condominium
- Residential
- Active
- 1255 sq ft

Basics

Bathrooms Full: 2
Category: Residential
Status: Active
Bathrooms: 2 baths
Year built: 2006

Lot Size Units: Square Feet
Type: Condominium
Bedrooms: 2 beds
Area: 1255 sq ft



Property details

Subdivision Name: NEO VERTIKA CONDO

Parcel Number: 01-41-38-122-1650

Possession: Close Of Escrow

Property Features

Exterior Features: Balcony

Waterfront Features: Intracoastal Access

Parking Features: Assigned,Two or More Spaces,Valet

Appliances: Dryer,Dishwasher,Electric Range,Microwave,Refrigerator,Washer

Association Amenities: Fitness Center,Pool

Cooling: Central Air

Covered Spaces: 2

Furnished: Unfurnished

Garage Y/N: 1

Heating Y/N: 1

View: City,Intercoastal

Entry Location: 31

Property Attached Y/N: 1

Stories Total: 36

Interior Features: Upper Level Primary

Pool Features: Association

Security Features: Security System,Closed Circuit Camera(s),Elevator Secured,Secured Garage/Parking,Key Card Entry,Lobby Secured

Architectural Style: High Rise,Penthouse

Construction Materials: Block

Cooling Y/N: 1

Flooring: Tile

Garage Spaces: 2

Heating: Central

Pets Allowed: Conditional,Yes

Entry Level: 31

Patio and Porch Features: Balcony,Open

Waterfront Y/N: 1

Rooms & Units Description

Unit Number: PH111



Location Details

County Or Parish: Miami-Dade County

Middle/Junior School: Shenandoah

Elementary School: Southside

High School: Washington; Brooker T

Fees & Taxes

Tax Annual Amount: 10405

Tax Year: 2023

Tax Legal Description: NEO VERTIKA CONDO UNIT
PHI11 UNDIV 0.003167568% INT IN COMMON
ELEMENTS OFF REC 24605-3349 COC 25057-4693 08
2006 1

Association Fee: 1507

Association Fee Frequency: Monthly

Association Fee Includes:
Amenities,Trash,Water

Miscellaneous

Public Survey Township: 1

**Public
Survey
Section:** 38

Syndication Remarks: Opportunity to live in a PH with 20 foot ceilings with
DIRECT views to the Miami River & Skyline.

**Year Built
Details:**
Resale

Virtual Tour URL:

<https://www.propertypanorama.com/instaview/mia/A11524487>

Courtesy of

Office Name: Compass Florida, LLC.

