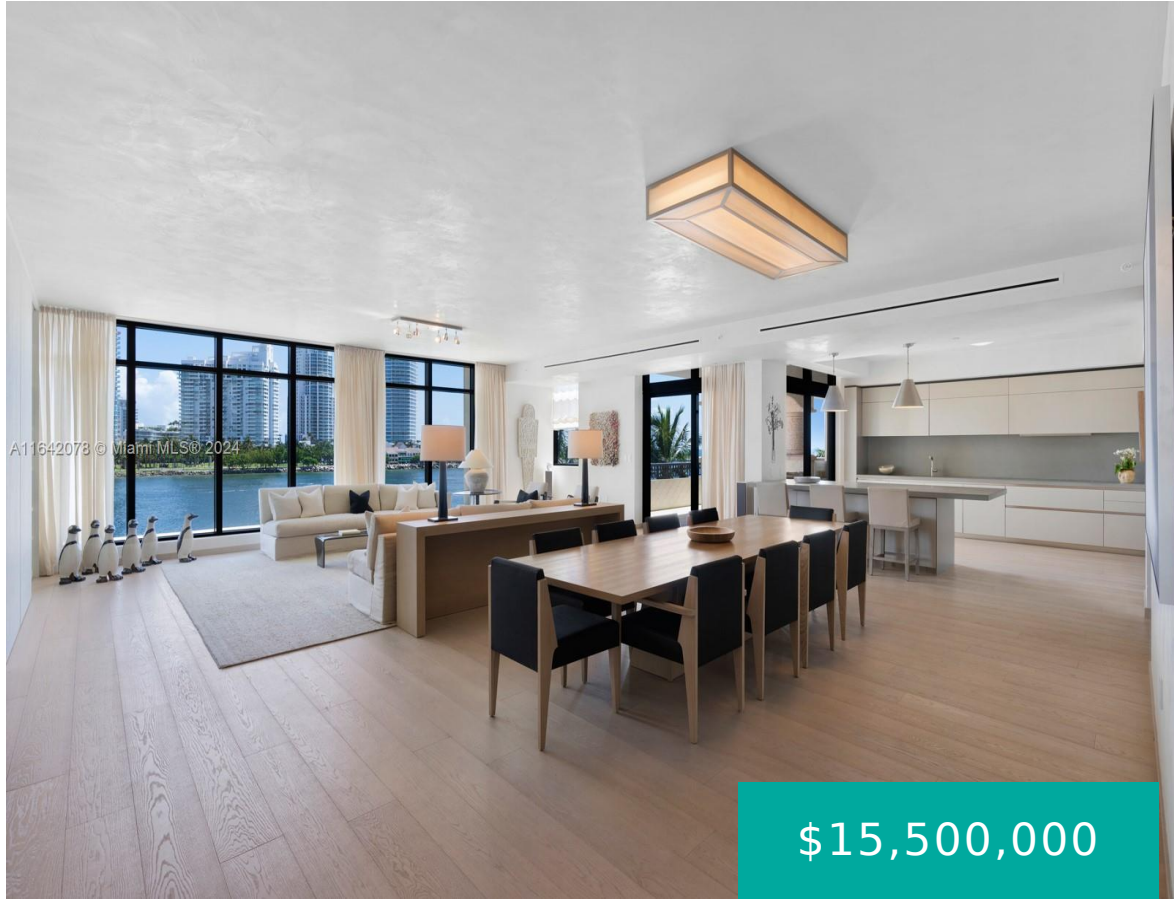


7034 FISHER ISLAND DR MIAMI BEACH FL 33109 7034 FISHER ISLAND DR 7034

<https://www.cays.com>



\$15,500,000



PALAZZO DEL SOL/DELLA LUNA AT FISHER ISLAND CONDO UNIT 7034 UNDIV
1.027% INT IN COMMON ELEMENTS OFF REC 29908-447 Step Inside with Me!

- 4 beds
- 4, 5 baths
- Condominium, Residential
- Condominium, Residential
- Active
- 4956 sq ft

Basics



Bathrooms Half: 1

Category: Condominium, Residential

Type: Condominium, Residential **Status:** Active

Bedrooms: 4 beds

Bathrooms: 4, 5 baths

Half baths: 1 half bath

Floors: 10 floors

Area: 4956 sq ft

Year built: 2016

View: Bay, City, Ocean

Subdivision Name: PALAZZO DEL SOL/DELLA LUN

County: Miami-Dade

Property details

Subdivision Name: PALAZZO DEL SOL/DELLA LUN

Parcel Number: 33109

Property Features

Waterfront Features: Bayfront **Parking Features:** GolfCartGarage, TwoOrMoreSpaces, Valet

Cooling: CentralAir, Electric

Cooling Y/N: 1

Garage Y/N: 1

Heating: Central, Electric

Heating Y/N: 1

Pets Allowed: No

View: Bay, City, Ocean

View Y/N: 1

Waterfront Y/N: 1

Stories Total: 10

Rooms & Units Description

Unit Number: 7034

Location Details

County Or Parish: Miami-Dade



Building Details

Construction Materials: Block

Garage Spaces: 2

Covered Spaces: 2

Floor covering: Wood

Amenities & Features

Pool Features: Association

Security Features: DoorMan,ElevatorSecured

Association Amenities: BusinessCenter,Clubhouse,FitnessCenter,Barbecue,PicnicArea,Pool,Trails,Elevators

Window Features: ImpactGlass

Exterior Features: Balcony,SecurityHighImpactDoors,Porch

Interior Features:

BuiltInFeatures,BedroomOnMainLevel,ConvertibleBedroom,DiningArea,SeparateFormalDiningRoom,DualSinks,EatInKitchen,Elevator,SittingAreaInPrimary,SeparateShower

Parking Features: GolfCartGarage,TwoOrMoreSpaces,Valet

Patio & Porch Features: Balcony,Open,WrapAround

Waterfront Features: Bayfront

Cooling: CentralAir,Electric

Heating: Central,Electric

Appliances:

BuiltInOven,Dryer,Dishwasher,ElectricWaterHeater,Refrigerator

Expenses, Fees & Taxes

Association Fee: \$10,496

Tax Year: 2023

Tax Annual Amount: \$114,262

Fees & Taxes

Association Fee: 10496

Miscellaneous

Association Fee Frequency: Monthly

Listing Terms: Cash

List Office Name: Douglas Elliman

Miscellaneous

Above Grade Finished Area: Miami Beach, FL

Virtual Tour URL: <https://youtu.be/ujkO1niscVw>



Courtesy of

Office Name: Douglas Elliman

