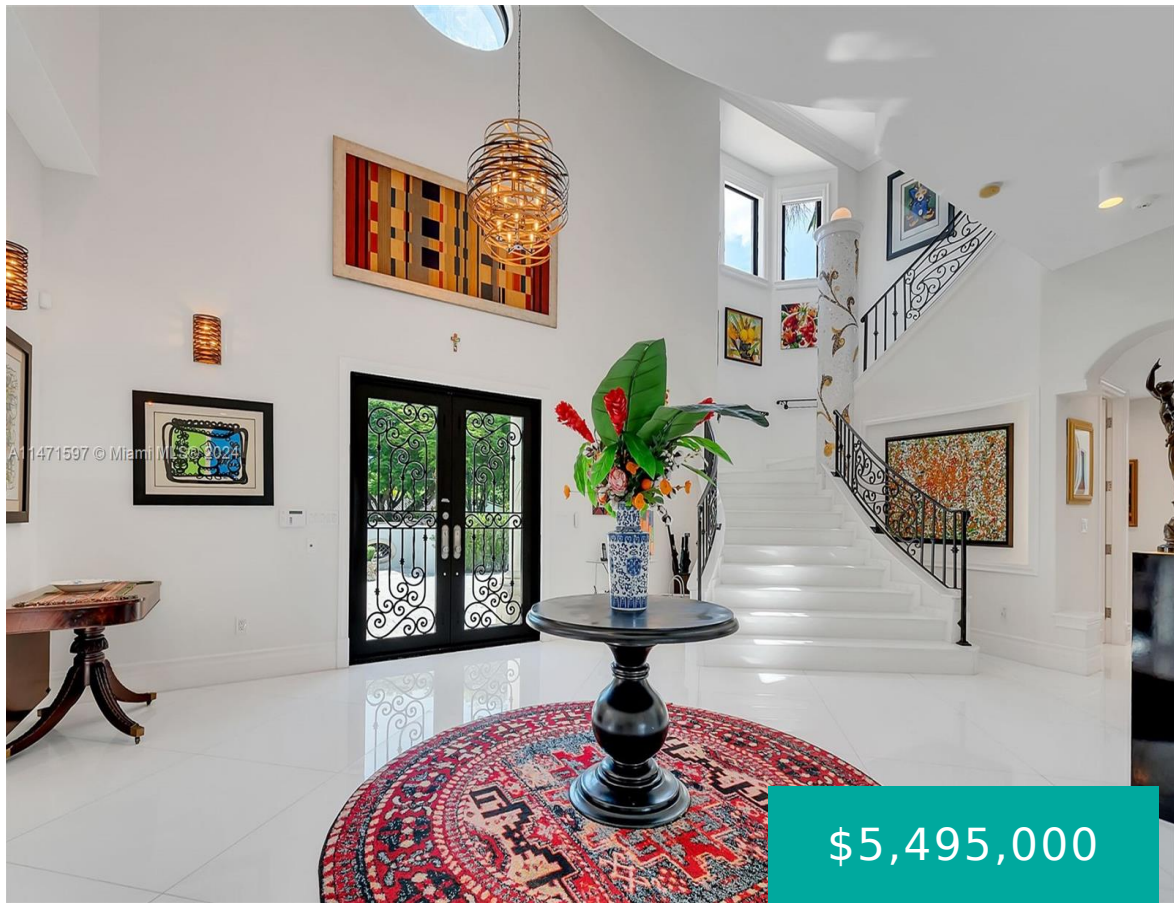


7400 72ND CT MIAMI FL 33143 7400 SW 72ND CT

<https://www.cays.com>



\$5,495,000



RADCLIFFE MANOR PB 55-15 LOT 3 BLK 2 LOT SIZE IRREGULAR OR
 18312-3994 1098 1 COC 25575-0235 04 2007 1 This absolutely breathtaking
 9-bedroom, 8-full bath, 2-half bath villa is nestled on a sprawling acre lot, this
 estate redefines luxury living with its resort-style saltwater pool, spa, the
 covered patio, complete with a serene fountain [...]

- 9 beds
- 8, 10 baths
- Residential, SingleFamilyResidence
- Residential, SingleFamilyResidence
- Active
- 8284 sq ft

Basics



Bathrooms Half: 2

Category: Residential, SingleFamilyResidence

Type: Residential, SingleFamilyResidence **Status:** Active

Bedrooms: 9 beds

Bathrooms: 8, 10 baths

Half baths: 2 half baths

Floors: 2 floors

Area: 8284 sq ft

Lot size: 37113, 37113 sq ft

Year built: 2009

View: Garden

Subdivision Name: RADCLIFFE MANOR

County: Miami-Dade

Property details

Subdivision Name: RADCLIFFE MANOR

Lot Size Square Feet: 37113

Parcel Number: 33143

Property Features

Parking Features: Driveway,PaverBlock

Cooling: CentralAir

Cooling Y/N: 1

Garage Y/N: 1

Heating: Central

Heating Y/N: 1

View: Garden

Stories: 2

Location Details

County Or Parish: Miami-Dade

Elementary School: Ludlam

Middle/Junior School: South Miami

High School: South Miami

Zoning Description: 2300

Building Details



Water Source: Public

Lot Features: LessThanOneAcre

Construction Materials: Block

Garage Spaces: 3

Floor covering: CeramicTile

Architectural Style: TwoStory

Sewer: SepticTank

Covered Spaces: 3

Levels: Two

Amenities & Features

Pool Features: InGround,Pool

Security Features: SecuritySystemOwned

Roof: Other

Cooling: CentralAir

Exterior Features: Barbecue,Fence,Lighting,Patio,Shed

Interior Features:

BuiltInFeatures,BedroomOnMainLevel,BreakfastArea,DiningArea,SeparateFormalDiningRoom,DualSinks,Elevator,FrenchDoorsAtriumDoors,FirstFloorEntry,KitchenIsland,SeparateShower,VaultedCeilings,WalkInClosets

Parking Features: Driveway,PaverBlock

Patio & Porch Features: Patio

Window Features: Blinds,ImpactGlass

Door Features: FrenchDoors

Heating: Central

Appliances:

BuiltInOven,Dryer,Dishwasher,GasRange,Microwave,Refrigerator,Washer

Nearby Schools

Middle Or Junior School: South Miami

High School: South Miami

Elementary School: Ludlam

Expenses, Fees & Taxes

Tax Annual Amount: \$37,788

Tax Year: 2023

Miscellaneous

List Office Name: BHHS EWM Realty

Community Features: StreetLights

Attribution Contact: kennyraymond@gmail.com

Listing Terms: Cash,Conventional

Direction Faces: East

Miscellaneous

Above Grade

Finished Area:

Miami, FL

Virtual Tour URL:

<https://www.propertypanorama.com/instaview/mia/A11471597>



Courtesy of

Office Name: BHHS EWM Realty

