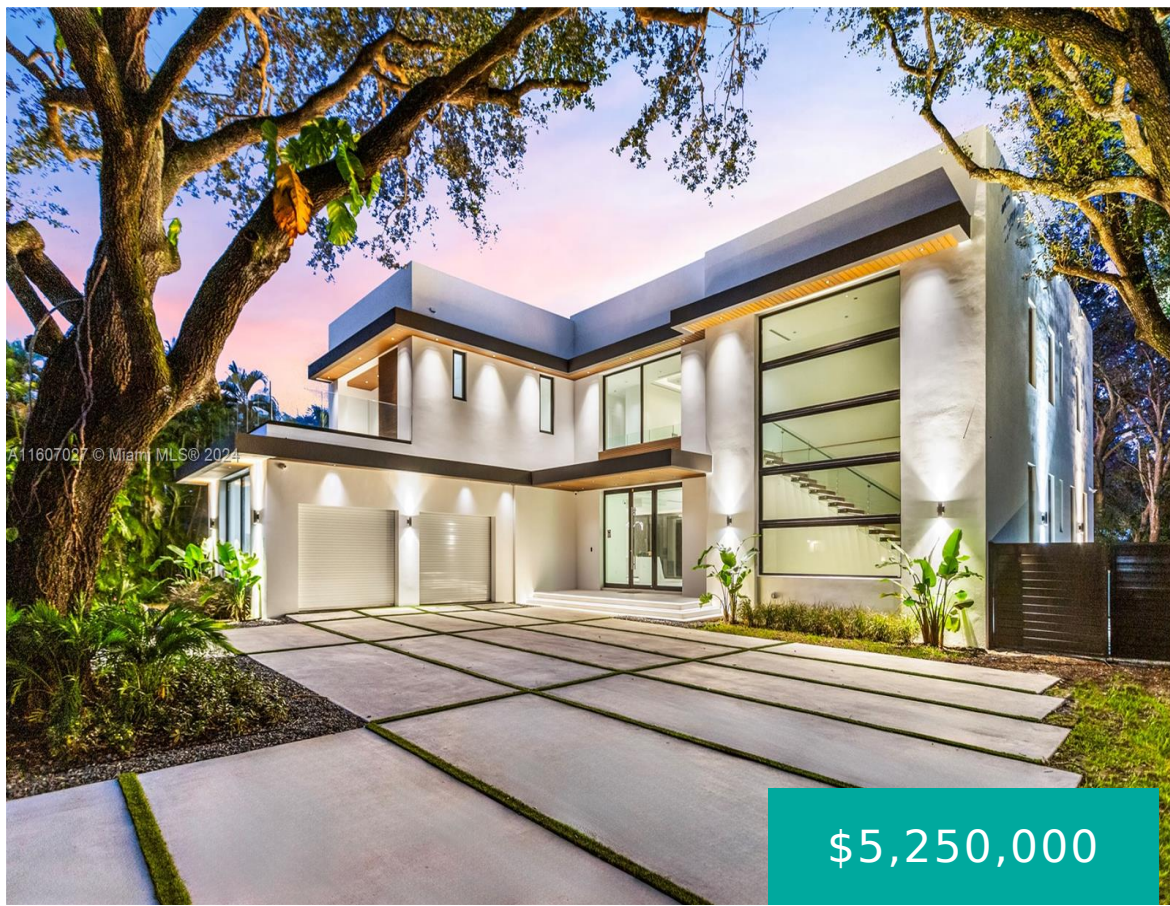


7635 72ND AVE MIAMI FL 33143 7635 SW 72ND AVE

<https://www.cays.com>



35 54 40 .515 AC M/L SUNSET ADDN PB 45-76 W1/2 OF LOT 2 BLK 5 Welcome to Residence 7635, where contemporary elegance meets natural allure in Glenvar Heights! This 6,574 Total SF, 6 BD/7 BA new build sits on a lush half-acre. Beyond the gated entrance, expansive interiors seamlessly merge w/ the outdoor oasis. [...]

- 6 beds
- 7, 7 baths
- Residential, SingleFamilyResidence
- Residential, SingleFamilyResidence
- Active
- 5005 sq ft

Basics



Category: Residential, SingleFamilyResidence

Status: Active

Bathrooms: 7, 7 baths

Floors: 2 floors

Lot size: 22433, 22433 sq ft

View: Garden,Pool

County: Miami-Dade

Type: Residential, SingleFamilyResidence

Bedrooms: 6 beds

Half baths: 0 half baths

Area: 5005 sq ft

Year built: 2024

Subdivision Name: SUNSET ADDN

Property details

Subdivision Name: SUNSET ADDN

Lot Size Square Feet: 22433

Parcel Number: 33143

Property Features

Parking Features:

Attached,CircularDriveway,Covered,Garage,GolfCartGarage,GarageDoorOpener

Cooling Y/N: 1

Heating: Central

Spa Y/N: 1

View: Garden,Pool

Cooling: CentralAir

Garage Y/N: 1

Heating Y/N: 1

Pets Allowed:
NoPetRestrictions,Yes

Stories: 2

Location Details

County Or Parish: Miami-Dade

Middle/Junior School: South Miami

Zoning Description: 2300

Elementary School: Ludlam

High School: South Miami

Building Details



Water Source: Public

Lot Features: SprinklerSystem

Construction Materials: Block

Garage Spaces: 2

Floor covering: Tile

Architectural Style: TwoStory

Sewer: SepticTank

Covered Spaces: 2

Levels: Two

Amenities & Features

Pool Features: Gunite,Heated,InGround,OutsideBathAccess,PoolEquipment,Pool,PoolSpaCombo

Patio & Porch Features: Balcony,Open,Patio

Roof: Concrete

Window Features: ImpactGlass

Exterior Features: Balcony,Barbecue,Fence,Lighting,OutdoorGrill,Patio,SecurityHighImpactDoors

Heating: Central

Laundry Features: LaundryTub

Parking Features: Attached,CircularDriveway,Covered,Garage,GolfCartGarage,GarageDoorOpener

Accessibility Features: AccessibleElevatorInstalled

Utilities: CableAvailable

Cooling: CentralAir

Furnished: Unfurnished

Interior Features:

WetBar,BedroomOnMainLevel,DualSinks,EatInKitchen,FirstFloorEntry,KitchenIsland,LivingDiningRoom,Pantry,SeparateShower,UpperLevelPrimary,WalkInClosets,Elevator

Appliances: SomeGasAppliances,BuiltInOven,Dryer,Dishwasher,ElectricWaterHeater,Disposal,GasRange,Microwave,Refrigerator,Washer

Nearby Schools

Middle Or Junior School: South Miami

High School: South Miami

Elementary School: Ludlam

Expenses, Fees & Taxes

Tax Annual Amount: \$12,015

Tax Year: 2023

Miscellaneous

Association Fee Frequency: Monthly **List Office Name:** One Sotheby's International Realty

Listing Terms: Cash,Conventional **Community Features:** StreetLights

Direction Faces: West

Miscellaneous

Above Grade Finished Area: **Virtual Tour URL:**

https://filessharing.s3.us-east-2.amazonaws.com/BENAHOME/7635+SW/++++RENDERS+7635/Casa-7635-FL_TM-2024-2k+final+2.mp4

Area:

Miami, FL



Courtesy of

Office Name: One Sotheby's International Realty

