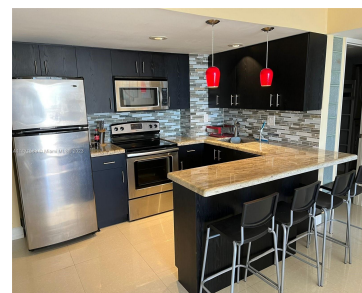


770 CLAUGHTON ISLAND DR 1414 MIAMI FL 33131

<https://www.cays.com>



OPPORTUNITY! REMODELED Brickell Key FULLY FURNISHED 2 bed/2 bath ARCHITECTURALLY RE-REDESIGNED floor plan has a BONUS DEN/Study. Incredible location in EXCLUSIVE BRICKELL KEY ISLAND. Enjoy building amenities such as a gym, business center, clubroom, 24-hour concierge, valet and security, and management on site. NOTE: The Condo Association is performing a concrete restoration on the pool/amenities [...]

- 2 beds
- 2 baths
- Condominium
- Residential
- Active
- 985 sq ft

Basics

Bathrooms Full: 2

Category: Residential

Status: Active

Bathrooms: 2 baths

Year built: 1990

Lot Size Units: Square Feet

Type: Condominium

Bedrooms: 2 beds

Area: 985 sq ft



Property details

Total Building Area: 985

Parcel Number: 01-42-07-004-2560

Subdivision Name: ISOLA CONDO

Possession: Closing & Funding

Property Features

Exterior Features: Balcony

Waterfront Features: Bay Front

Parking Features: Assigned,Covered,One Space

Appliances: Dryer,Dishwasher,Electric Range,Disposal,Microwave,Refrigerator

Association Amenities: Business Center,Fitness Center

Cooling: Central Air,Electric

Covered Spaces: 1

Garage Spaces: 1

Heating: Central,Electric

Pets Allowed: Conditional,Yes

View Y/N: 1

Entry Location: 14

Property Attached Y/N: 1

Stories Total: 23

Interior Features: Built-in Features,First Floor Entry,Living/Dining Room,Other

Window Features: Sliding

Security Features: Elevator Secured,Secured Garage/Parking,Lobby Secured,Phone Entry,Smoke Detector(s)

Architectural Style: High Rise

Construction Materials: Block

Cooling Y/N: 1

Flooring: Ceramic Tile

Garage Y/N: 1

Heating Y/N: 1

View: Bay

Entry Level: 14

Patio and Porch Features: Balcony,Open

Waterfront Y/N: 1

Rooms & Units Description

Unit Number: 1414



Location Details

County Or Parish: Miami-Dade County

Fees & Taxes

Tax Annual Amount: 7196

Tax Year: 2023

Tax Legal Description: ISOLA CONDO
UNIT 1414 UNDIV 985/259,762 INT IN
COMMON ELEMENTS OFF REC
22645-3124 COC 22850-3081 10 2004 1

Association Fee: 1564

Association Fee Frequency: Monthly

Association Fee Includes:
Amenities,Insurance,Sewer,Trash,Water

Miscellaneous

Public Survey Township: 1

**Public
Survey
Section:** 7

Syndication Remarks: OPPORTUNITY! REMODELED Brickell Key fully furnished
water views 2 bed/2 bath ARCHITECTURALLY RE-REDESIGNED floor plan has a
BONUS DEN/Study.

**Year Built
Details:**
Resale

Virtual Tour URL: <https://www.propertypanorama.com/instaview/mia/A11471589>

Courtesy of

Office Name: Compass Florida, LLC

