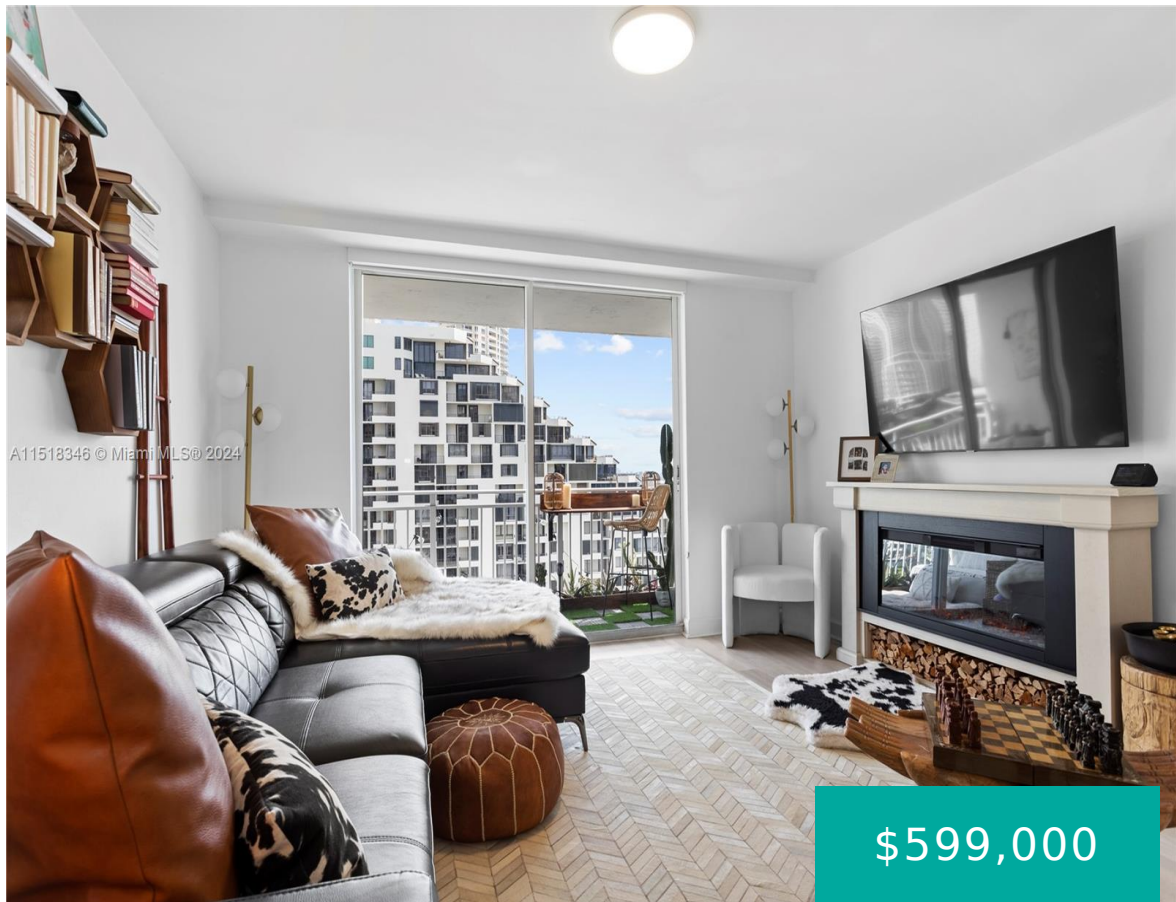


770 CLAUGHTON ISLAND DR 1705 MIAMI FL 33131

https://www.cays.com



Welcome to Brickell Key. This fully remodeled 1-bed residence boasts upgraded appliances, stylish furnishings Brand new water heater and A/C. Enjoy breathtaking views of Brickell Key, Black out blinds throughout the unit and the convenience of a parking spot on the 1st floor. Excitingly, brand new amenities including common ground area, a pool/Spa and tennis [...]

- 1 bed
- 1 bath
- Condominium
- Residential
- Active
- 708 sq ft

Basics

Bathrooms Full: 1
Category: Residential
Status: Active
Bathrooms: 1 bath
Year built: 1990

Lot Size Units: Square Feet
Type: Condominium
Bedrooms: 1 bed
Area: 708 sq ft



Property details

Total Building Area: 708
Subdivision Name: ISOLA CONDO
Possession: Close Of Escrow

Disclosures: Special Assessment
Parcel Number: 01-42-07-004-0890

Property Features

Exterior Features: Balcony,Privacy Wall

Accessibility Features: Accessible Elevator Installed,Accessible Approach with Ramp,Accessible Doors,Accessible Hallway(s)

Window Features: Blinds

Security Features: Lobby Secured,Other,Phone Entry

Architectural Style: Other

Construction Materials: Brick,Block,Stucco

Cooling Y/N: 1

Flooring: Tile

Garage Spaces: 1

Heating: Central

Pets Allowed: Conditional,Yes

View Y/N: 1

Entry Location: 17

Property Attached Y/N: 1

Stories Total: 23

Interior Features: Bedroom on Main Level,First Floor Entry,Air Filtration

Waterfront Features: Bay Front

Parking Features: One Space

Appliances: Dishwasher,Disposal

Association Amenities: Fitness Center,Elevator(s)

Cooling: Central Air

Covered Spaces: 1

Furnished: Furnished

Garage Y/N: 1

Heating Y/N: 1

View: Bay,City,Ocean,Other

Entry Level: 17

Patio and Porch Features: Balcony,Open

Waterfront Y/N: 1

Utilities: Cable Available

Rooms & Units Description

Unit Number: 1705



Location Details

County Or Parish: Miami-Dade County

Fees & Taxes

Tax Year: 2023

Tax Legal Description: ISOLA CONDO
UNIT 1705 UNDIV 708/259,762 INT IN
COMMON ELEMENTS OFF REC
22645-3124 COC 23111-0069 01 2005 1

Association Fee: 1070

Association Fee Frequency: Monthly

Association Fee Includes: Association
Management,Common Areas,Cable TV,Hot
Water,Maintenance Grounds,Pool(s),Reserve
Fund,Sewer,Trash,Water

Miscellaneous

Public Survey Township: 1

**Public
Survey
Section:** 7

Syndication Remarks: Special Assessment - \$379.17 Per month

**Year Built
Details:**
Resale

Virtual Tour URL:
<https://www.propertypanorama.com/instaview/mia/A11518346>

Courtesy of

Office Name: Douglas Elliman

