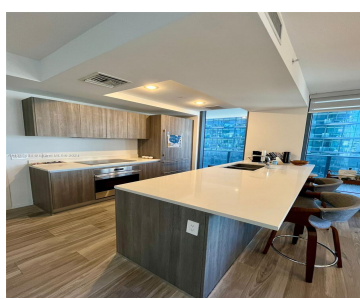
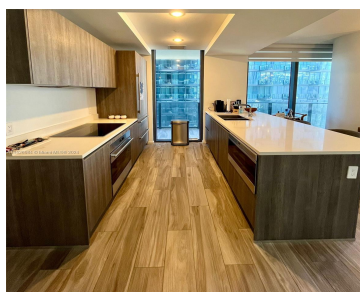
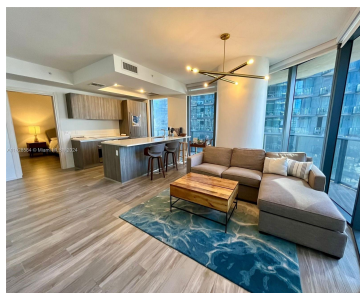


801 S MIAMI AVE 3005 MIAMI FL 33130

https://www.cays.com



Welcome to SLS Lux! Brickell's newest addition in a superb location, Located across from the Brickell City Centre. This incredible CORNER unit features a PRIVATE elevator, 2 bedrooms | 2 Bathrooms, MODERN TITLE FLOORS throughout, an Italian Kitchen with modern appliances, and SPECTACULAR City Views. Enjoy the best amenities: 2 swimming pools, a restaurant, a [...]

- 2 beds
- 2 baths
- Condominium
- Residential Lease
- Active
- 1152 sq ft

## Basics

**Bathrooms Full:** 2  
**Category:** Residential Lease  
**Status:** Active  
**Bathrooms:** 2 baths  
**Year built:** 2018

**Lot Size Units:** Square Feet  
**Type:** Condominium  
**Bedrooms:** 2 beds  
**Area:** 1152 sq ft



---

## Property details

**Lease Term:** 12 Months

**Subdivision Name:** 801 SMA RESIDENCES CONDO

**Parcel Number:** 01-41-38-161-1950

**Rent Includes:** Internet,Sewer,Water

---

## Property Features

**Community Features:** Pool

**Exterior Features:** Balcony

**Interior Features:** Entrance  
Foyer,Eat-in Kitchen,Living/Dining  
Room,Split Bedrooms,Bar

**Window Features:** Sliding

**Pool Features:** Pool,Community

**Parking Features:** Assigned,Covered,One Space

**Security Features:** Building  
Security,Closed Circuit  
Camera(s),Lobby Secured,Smoke  
Detector(s)

**Appliances:** Dryer,Dishwasher,Electric  
Range,Disposal,Microwave,Refrigerator,Washer

**Architectural Style:** High Rise

**Association Amenities:** Billiard Room,Fitness  
Center,Management,Playground,Pool,Putting  
Green(s),Sauna

**Construction Materials:** Block

**Cooling:** Central Air,Electric

**Cooling Y/N:** 1

**Covered Spaces:** 1

**Flooring:** Tile

**Furnished:** Unfurnished

**Garage Spaces:** 1

**Garage Y/N:** 1

**Heating:** Central,Electric

**Heating Y/N:** 1

**Pets Allowed:** Conditional,No

**Sewer:** Public Sewer

**Entry Level:** 30

**Entry Location:** 30

**Patio and Porch Features:**  
Balcony,Open

**Water Source:** Public

---

## Rooms & Units Description

**Unit Number:** 3005



---

## Location Details

**County Or Parish:** Miami-Dade County

**Zoning Description:** 6408

---

## Fees & Taxes

**Tax Legal Description:** 801 SMA RESIDENCES CONDO UNIT 3005 UNDIV 0.002184% INT IN COMMON ELEMENTS OFF REC 29216-0119

---

## Miscellaneous

**Public Survey  
Township:** 1

**Public Survey Section:** 38

**Syndication Remarks:**  
The best building in a superb location, Located across from the Brickell City Centre. PRIVATE elevator, 2 bedroom and 2 Bathrooms.

**Virtual Tour URL:**  
<https://www.propertypanorama.com/instaview/mia/A11528584>

---

## Courtesy of

**Office Name:** Compass Florida, LLC

