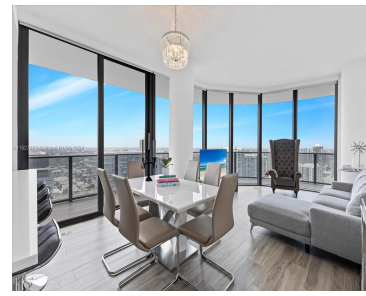


801 S MIAMI AVE 5209 MIAMI FL 33130

<https://www.cays.com>



\$1,750,000



Turn-key furnished 52nd floor corner lower Penthouse at SLSLUX. Corner unit with stunning views to the North-west with full wrap around balcony. Private elevator access and higher ceilings on the 52nd floor. SLSLUX is a premium luxury condominium directly across the street from Brickell City Center and Mary Brickell Village. Best location in the city. [...]

- 3 beds
- 3 baths
- Condominium
- Residential
- Active
- 1445 sq ft

Basics

Bathrooms Full: 3

Category: Residential

Status: Active

Bathrooms: 3 baths

Year built: 2018

Lot Size Units: Square Feet

Type: Condominium

Bedrooms: 3 beds

Area: 1445 sq ft



Property details

Total Building Area: 1445

Disclosures: Owner Is Listing Agent

Subdivision Name: 801 SMA RESIDENCES CONDO

Parcel Number: 01-41-38-161-3900

Possession: Close Of Escrow,Seller Rent Back

Property Features

Exterior Features: Security/High Impact Doors

Interior Features: Bidet,Walk-In Closet(s)

Pool Features: Association,Heated

Parking Features: One Space

Security Features: Security Guard,Fire Sprinkler System

Appliances: Dryer,Dishwasher,Electric Range,Microwave,Refrigerator,Washer

Association Amenities: Billiard Room,Clubhouse,Fitness Center,Pool,Spa/Hot Tub,Tennis Court(s)

Construction Materials: Block

Cooling: Central Air

Cooling Y/N: 1

Covered Spaces: 1

Flooring: Tile

Furnished: Furnished

Garage Spaces: 1

Garage Y/N: 1

Heating: Central

Heating Y/N: 1

Pets Allowed: Conditional,Yes

View: Bay,City,Intercoastal

View Y/N: 1

Entry Level: 52

Entry Location: 52

Property Attached Y/N: 1

Stories Total: 58

Utilities: Cable Available

Rooms & Units Description

Unit Number: 5209

Location Details



County Or Parish: Miami-Dade County

Fees & Taxes

Tax Annual Amount: 13007

Tax Year: 2023

Tax Legal Description: 801 SMA RESIDENCES CONDO
UNIT5209 UNDIV 0.002739% INT IN COMMON ELEMENTS
OFF REC 29216-0119

Association Fee: 2355

Association Fee Frequency: Monthly

Association Fee Includes: Cable
TV,Hot Water,Internet

Miscellaneous

Public Survey Township: 1

**Public
Survey
Section:** 38

Syndication Remarks: Turn-key furnished 52nd floor corner lower Penthouse at
SLSLUX. Corner unit with stunning views to the North-west with wrap around
balcony.

**Year Built
Details:**
Resale

Virtual Tour URL: <https://www.propertypanorama.com/instaview/mia/A11527463>

Courtesy of

Office Name: West Avenue Realty

