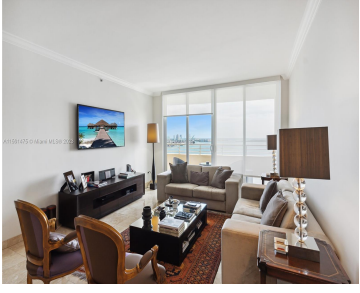


808 BRICKELL KEY DR 2502 MIAMI FL 33131

<https://www.cays.com>



MUST SEE! Great opportunity to own the best unobstructed views of Brickell Key. This 2/2.5 unit has a split floor plan, marble floors throughout and wood floors in bedrooms. Unit is bright and spacious, has state of the art appliances, lots of cabinet space in the kitchen and large walk in closets in the bedrooms. [...]

- 2 beds
- 3 baths
- Condominium
- Residential
- Active
- 1709 sq ft

Basics

Bathrooms Half: 1

Lot Size Units: Square Feet

Type: Condominium

Bedrooms: 2 beds

Area: 1709 sq ft

Bathrooms Full: 2

Category: Residential

Status: Active

Bathrooms: 3 baths

Year built: 1998



Property details

Total Building Area: 1709

Subdivision Name: TWO TEQUESTA POINT CONDO

Parcel Number: 01-42-06-059-0600

Possession: Close Of Escrow

Property Condition: Updated/Remodeled

Property Features

Exterior Features: Barbecue,Security/High Impact Doors

Interior Features: Bedroom on Main Level,Breakfast Area,Closet Cabinetry,Dining Area,Separate/Formal Dining Room,Dual Sinks,Eat-in Kitchen,First Floor Entry,Separate Shower

Waterfront Features: Ocean Front

Pool Features: Association

Parking Features: One Space,Valet

Security Features: Door Man,Elevator Secured,Secured Garage/Parking,Smoke Detector(s)

Appliances: Dryer,Dishwasher,Electric Range,Disposal,Microwave,Refrigerator,Washer

Architectural Style: High Rise

Association Amenities: Fitness Center,Barbecue,Picnic Area,Pool,Sauna,Spa/Hot Tub,Tennis Court(s),Trail(s),Trash,Elevator(s)

Construction Materials: Block

Cooling: Central Air

Cooling Y/N: 1

Covered Spaces: 1

Flooring: Marble,Wood

Garage Spaces: 1

Garage Y/N: 1

Heating: Central

Heating Y/N: 1

Pets Allowed: Size Limit,Yes

View: Ocean,Water

View Y/N: 1

Entry Level: 25

Entry Location: 25

Property Attached Y/N: 1

Waterfront Y/N: 1

Stories Total: 30

Rooms & Units Description



Unit Number: 2502

Location Details

County Or Parish: Miami-Dade County

Fees & Taxes

Tax Annual Amount: 17794

Tax Year: 2022

Tax Legal Description: TWO TEQUESTA
POINT CONDO UNIT 2502 UNDIV 0.369 INT
IN COMMON ELEMENTS OFF REC 18379-274
OR 20747-2551 10/2002 1

Association Fee: 370

Association Fee Frequency: Monthly

Association Fee Includes: Amenities,Common
Areas,Maintenance
Structure,Security,Trash,Water

Miscellaneous

Public Survey Township: 1

**Public
Survey
Section:** 6

Syndication Remarks: MUST SEE! This 2/2.5 unit has a split floor plan, marble floors throughout and wood floors in bedrooms. Unit is bright and spacious. Amazing Views!

**Year Built
Details:**
Resale

Virtual Tour URL: <https://www.propertypanorama.com/instaview/mia/A11501475>

Courtesy of

Office Name: One Sotheby's International Realty

