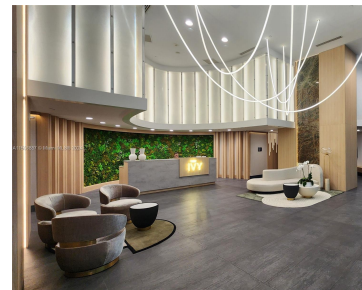
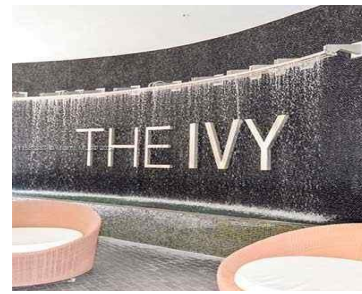
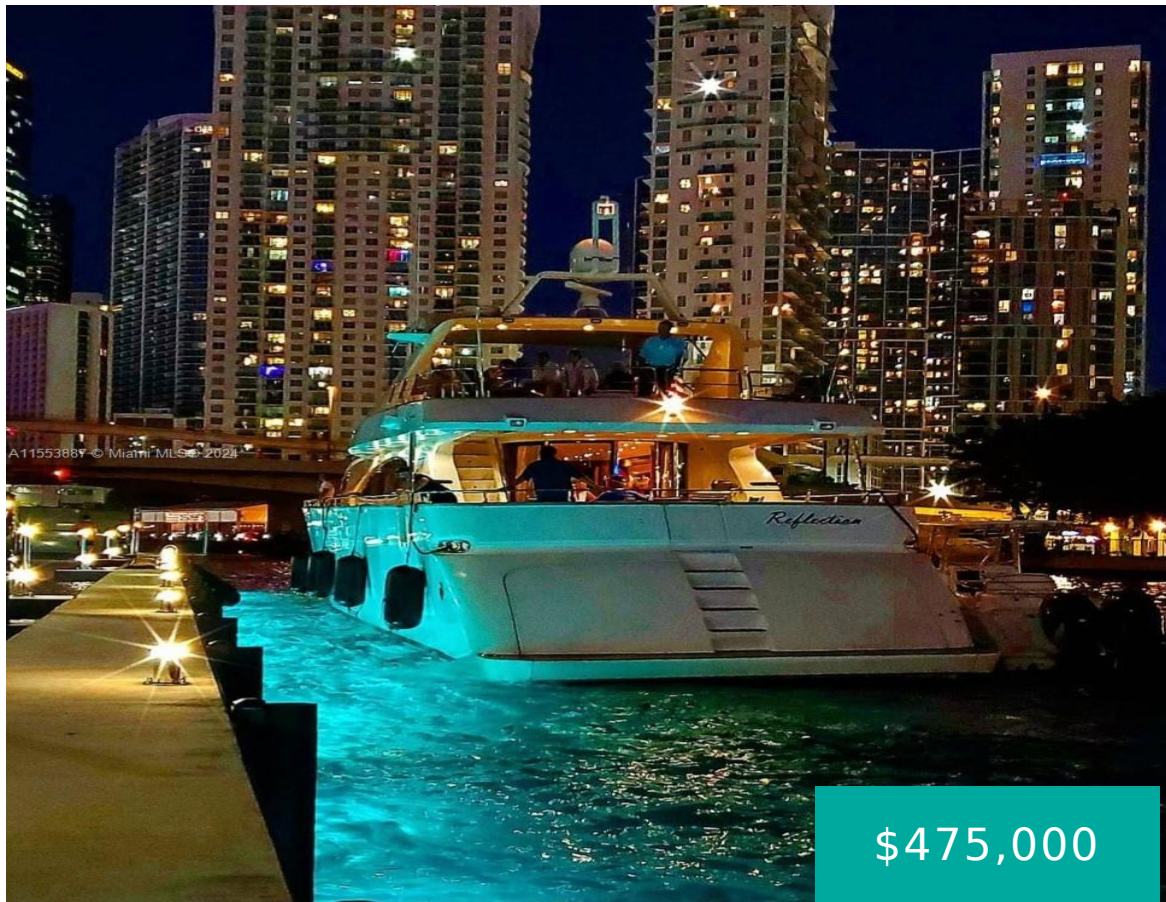


90 SW 3RD ST 1414 MIAMI FL 33130

<https://www.cays.com>



Welcome to “Tropical Manhattan” in the heart of Brickell! Enjoy breathtaking views of colorful buildings, the Miami River, and sparkling swimming pools from unit. This 1 bed features a walk-in closet, 1.5 baths and a spacious living room with the best view Brickell has to offer. This recently redesigned haven offers a big fitness facility, [...]

- 1 bed
- 2 baths
- Condominium
- Residential
- Active
- 846 sq ft

## Basics

**Bathrooms Half:** 1

**Lot Size Units:** Square Feet

**Type:** Condominium

**Bedrooms:** 1 bed

**Area:** 846 sq ft

**Bathrooms Full:** 1

**Category:** Residential

**Status:** Active

**Bathrooms:** 2 baths

**Year built:** 2008



---

## Property details

**Total Building Area:** 846

**Parcel Number:** 01-41-37-063-4190

**Subdivision Name:** IVY CONDO

**Possession:** Closing & Funding

---

## Property Features

**Exterior Features:** Balcony

**Waterfront Features:** River Front

**Parking Features:** One Space

**Appliances:** Dryer,Dishwasher,Electric Range,Disposal,Refrigerator,Washer

**Association Amenities:** Fitness Center,Pool,Elevator(s)

**Cooling:** Central Air,Electric

**Flooring:** Ceramic Tile

**Heating Y/N:** 1

**View:** River

**Entry Level:** 14

**Patio and Porch Features:** Balcony,Open

**Waterfront Y/N:** 1

**Interior Features:** Bedroom on Main Level,Closet Cabinetry,Kitchen Island,Living/Dining Room,Split Bedrooms,Walk-In Closet(s),Elevator

**Pool Features:** Association

**Security Features:** Elevator Secured,Other,Fire Sprinkler System

**Architectural Style:** High Rise

**Construction Materials:** Block

**Cooling Y/N:** 1

**Heating:** Central,Electric

**Pets Allowed:** Conditional,Yes

**View Y/N:** 1

**Entry Location:** 14

**Property Attached Y/N:** 1

**Stories Total:** 45

---

## Rooms & Units Description

**Unit Number:** 1414

---

## Location Details



County Or Parish: Miami-Dade County

---

## Fees & Taxes

**Tax Annual Amount:** 5589 **Tax Year:** 2023

**Tax Legal Description:** IVY **Association Fee:** 902

CONDO UNIT 1414 UNDIV  
0.1539% INT IN COMMON  
ELEMENTS OFF REC  
26412-2468

**Association Fee  
Frequency:** Monthly

**Association Fee Includes:** Common  
Areas,Internet,Maintenance  
Structure,Other,Parking,Pool(s),Security,Trash,Water

---

## Miscellaneous

**Public Survey Township:** 1

**Public  
Survey  
Section:** 37

**Syndication Remarks:** Welcome to Tropical Manhattan in the heart of Brickell!  
Enjoy breathtaking views of colorful buildings, the Miami River, and sparkling  
swimming pools.

**Year Built  
Details:**  
Resale

**Virtual Tour URL:** <https://www.propertypanorama.com/instaview/mia/A11553887>

---

## Courtesy of

**Office Name:** Miami New Realty

