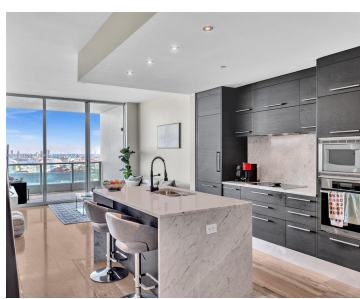
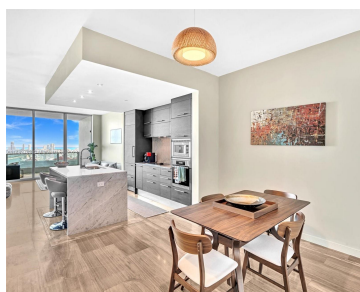
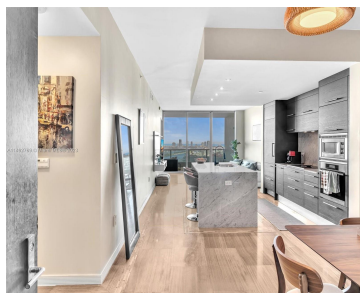
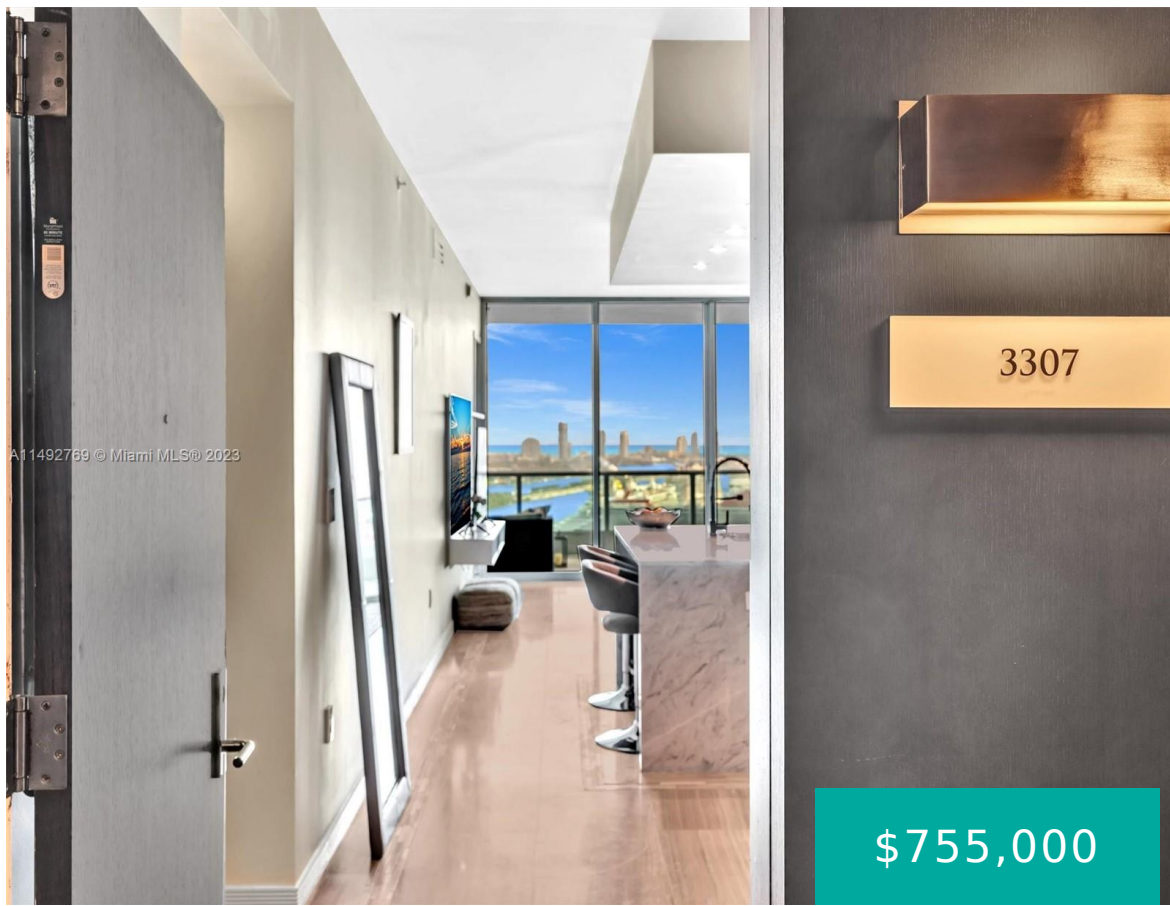


900 BISCAYNE BLVD 3307 MIAMI FL 33132

<https://www.cays.com>



Exceptional views abound from one of Miami's premiere downtown addresses. This 1BR+Den w/2 full baths offers zen vibes & luxurious upgrades throughout. Imported marble-tiled floors frame an open concept living/dining/kitchen area w/ top of the line Miele & Subzero appliances. Marble countertops in kitchen & bath have been newly polished & new washer/dryer recently installed. High [...]

- 1 bed
- 2 baths
- Condominium
- Residential
- Active
- 938 sq ft

Basics

Bathrooms Full: 2
Category: Residential
Status: Active
Bathrooms: 2 baths
Year built: 2008

Lot Size Units: Square Feet
Type: Condominium
Bedrooms: 1 bed
Area: 938 sq ft



Property details

Total Building Area: 938

Subdivision Name: 900 BISCAYNE BAY CONDO

Parcel Number: 01-32-31-069-3070 **Possession:** Closing & Funding

Property Features

Exterior Features: Security/High Impact Doors

Waterfront Features: Bay Front

Security Features: Elevator Secured,Secured Garage/Parking,Security Guard,Smoke Detector(s)

Architectural Style: High Rise

Construction Materials: Block

Cooling Y/N: 1

Flooring: Marble,Slate

Garage Y/N: 1

Heating Y/N: 1

View: Bay

Entry Level: 33

Property Attached Y/N: 1

Stories Total: 63

Interior Features: Built-in Features,Bedroom on Main Level,Closet Cabinetry,Dual Sinks,Walk-In Closet(s)

Parking Features: Covered,One Space,Valet

Appliances: Built-In Oven,Dryer,Dishwasher,Electric Range,Disposal,Gas Range,Ice Maker,Microwave,Refrigerator,Washer

Association Amenities: Billiard Room,Business Center,Barbecue,Picnic Area,Storage,Elevator(s)

Cooling: Central Air

Covered Spaces: 1

Garage Spaces: 1

Heating: Central

Pets Allowed: Size Limit,Yes

View Y/N: 1

Entry Location: 33

Waterfront Y/N: 1

Utilities: Cable Available

Rooms & Units Description

Unit Number: 3307

Location Details



County Or Parish: Miami-Dade County

Fees & Taxes

Tax Annual Amount: 6734

Tax Year: 2022

Tax Legal Description: 900 BISCAYNE BAY
CONDO UNIT 3307 UNIDV 0.115590% INT IN
COMMON ELEMENTS OFF REC 26340-0882

Association Fee: 1245

Association Fee Frequency: Monthly

Association Fee Includes:
Amenities,Common Areas,Cable
TV,Internet,Parking

Miscellaneous

Public Survey Township: 1

**Public
Survey
Section:** 31

Syndication Remarks: 1BR+Den w/2 full baths, luxurious upgrades throughout.
Â Imported marble-tiled floors, Miele & Subzero appliances, newly installed
wash/dryer, parking

**Year Built
Details:**
Resale

Virtual Tour URL: <https://www.propertypanorama.com/instaview/mia/A11492769>

Courtesy of

Office Name: Prospect Equities

