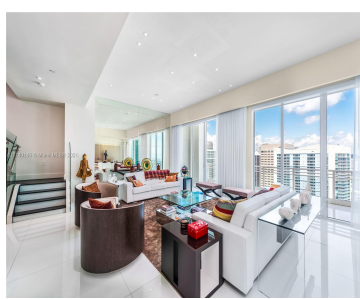
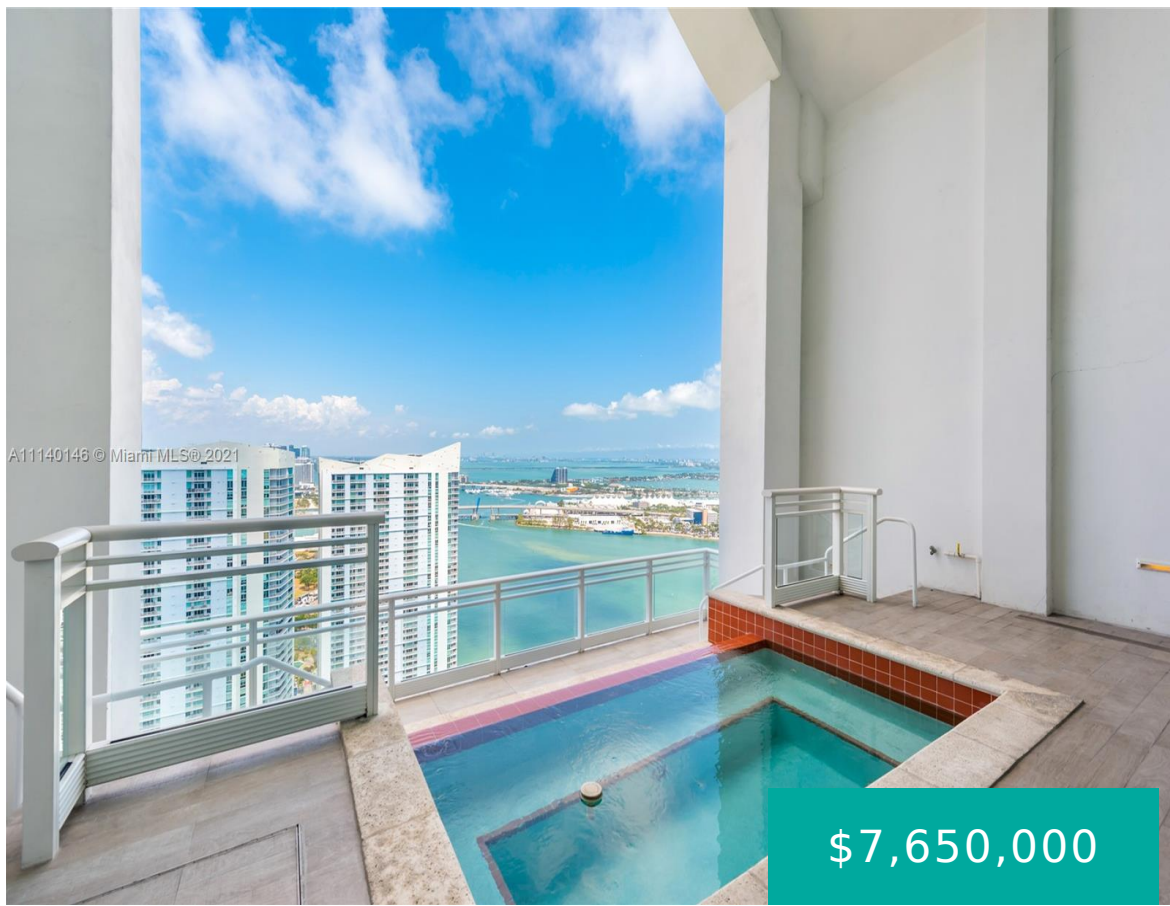


900 BRICKELL KEY BLVD PH3402 MIAMI FL 33131

<https://www.cays.com>



Luxury Penthouse in the newest and most exclusive building in Brickell Key. This unit has your own Private Pool, roof top terrace, in unit elevator & 3 Living Rooms making this place great for entertaining. Private elevator w/ Fingerprint sensors that lead directly to the foyer of your unit. Designed and completed by top designers [...]

- 4 beds
- 7 baths
- Condominium
- Residential
- Active
- 5000 sq ft

Basics

Bathrooms Half: 2
Lot Size Units: Square Feet
Type: Condominium
Bedrooms: 4 beds
Area: 5000 sq ft

Bathrooms Full: 5
Category: Residential
Status: Active
Bathrooms: 7 baths
Year built: 2008



Property details

Direction Faces: Northeast

Parcel Number: 01-42-06-067-0570

Living Area Source: Appraiser

Subdivision Name: Asia Condo

Possession: Closing & Funding

Property Features

Exterior Features:

Deck, Security/High Impact
Doors, Tennis Court(s)

Waterfront Features: Bay
Front, River Front

Pool Features:
Association, Heated

Security Features: Door
Man, Secured
Garage/Parking, Lobby Secured

Architectural Style: High
Rise, Penthouse

Construction Materials: Block

Cooling Y/N: 1

Flooring: Marble, Tile

Garage Y/N: 1

Heating Y/N: 1

View: Bay, Intercoastal, Ocean

Entry Level: 34

Patio and Porch Features: Deck

Waterfront Y/N: 1

Stories Total: 34

Interior Features: Built-in Features, Breakfast Area, Closet
Cabinetry, Dining Area, Separate/Formal Dining
Room, Entrance Foyer, Living/Dining Room, Custom
Mirrors, Sitting Area in Primary, Separate Shower, Upper
Level Primary, Bar, Elevator

Window Features: Blinds, Impact Glass

Parking Features:
Assigned, Attached, Covered, Garage, Two or More Spaces

Appliances: Built-In Oven, Dryer, Dishwasher, Electric
Range, Disposal, Ice Maker, Microwave, Refrigerator, Self
Cleaning Oven, Washer

Association Amenities: Basketball Court, Bike
Storage, Fitness Center, Pool, Sauna, Spa/Hot Tub, Tennis
Court(s), Trash

Cooling: Central Air

Covered Spaces: 3

Garage Spaces: 3

Heating: Central

Pets Allowed: Conditional, Yes

View Y/N: 1

Entry Location: 34

Property Attached Y/N: 1

Attached Garage Y/N: 1

Utilities: Cable Available



Rooms & Units Description

Unit Number: PH3402

Location Details

County Or Parish: Miami-Dade County

Fees & Taxes

Tax Annual Amount: 90511

Tax Year: 2021

Tax Legal Description: ASIA CONDO UNIT 3402 UNDIV 1.4493% INT IN COMMON ELEMENTS OFF REC 26305-0303

Association Fee Frequency:
Monthly

Association Fee Includes: Association Management,Amenities,Cable TV,Insurance,Internet,Maintenance Structure,Parking,Pool(s),Recreation Facilities,Reserve Fund,Sewer

Miscellaneous

Public Survey Township: 1

Public Survey Section: 6

Syndication Remarks: Over 5,000 sq ft PH with private hot tub and elevator in your unit. 3 different Living room spaces. Most exclusive building in Brickell.

Year Built Details: New Construction

Virtual Tour URL:

<https://app.immoviewer.com/landing/unbranded/61cd89bbc439d27428d0d5f2>

Courtesy of

Office Name: Multivest Realty, Inc.

