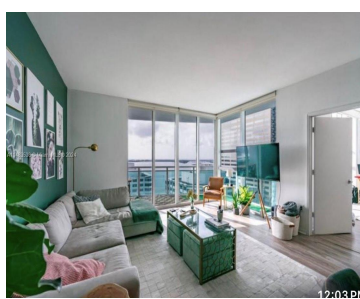
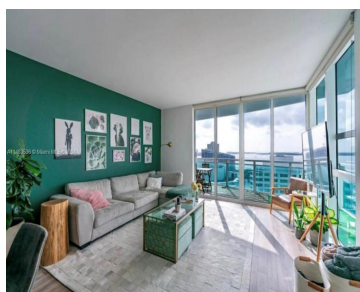
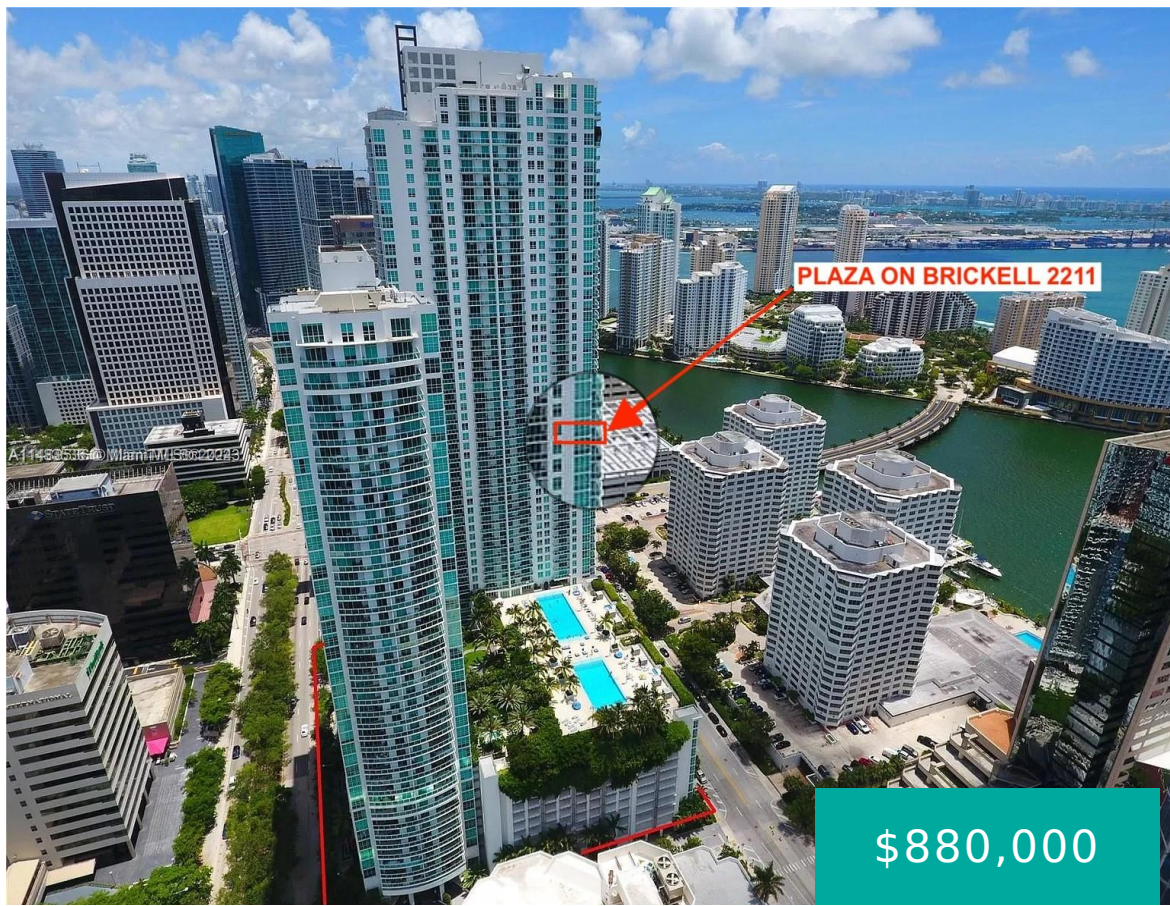


950 BRICKELL BAY DR 2211 MIAMI FL 33131

<https://www.cays.com>



BEAUTIFUL UNIT FOR SALE!! 2 beds, 2.5 baths Corner unit, Bay View, close distance to banks, supermarket, Nightlife and great restaurants. Best amenities in Brickell, 2 infinity pools, hot tub, meditation garden, business center, fitness center with spa and steamroom, party room, valet parking, concierge and much more. Unit occupied! Please, for showing see instructions at [...]

- 2 beds
- 3 baths
- Condominium
- Residential
- Active
- 1278 sq ft

Basics

Bathrooms Half: 1

Lot Size Units: Square Feet

Type: Condominium

Bedrooms: 2 beds

Area: 1278 sq ft

Bathrooms Full: 2

Category: Residential

Status: Active

Bathrooms: 3 baths

Year built: 2008



Property details

Total Building Area: 1278

Subdivision Name: THE PLAZA 851 BRICKELL CO

Parcel Number: 01-41-38-146-5270 **Possession:** Other

Property Features

Exterior Features: Balcony,Other

Window Features: Impact Glass

Parking Features: Attached,Covered,Garage,One Space

Appliances: Dryer,Dishwasher,Disposal,Ice Maker,Microwave,Refrigerator,Washer

Association Amenities: Fitness Center,Other,Pool,Spa/Hot Tub,Elevator(s)

Cooling: Central Air

Covered Spaces: 1

Garage Spaces: 1

Heating: Central,Electric

Pets Allowed: No Pet Restrictions,Yes

View Y/N: 1

Entry Location: 22

Attached Garage Y/N: 1

Interior Features: Elevator,First Floor Entry,Other

Pool Features: Association

Security Features: Key Card Entry,Lobby Secured,Other,Smoke Detector(s)

Architectural Style: High Rise

Construction Materials: Block

Cooling Y/N: 1

Flooring: Tile,Wood

Garage Y/N: 1

Heating Y/N: 1

View: Bay,Other

Entry Level: 22

Patio and Porch Features: Balcony,Open

Stories Total: 56

Rooms & Units Description

Unit Number: 2211

Location Details



County Or Parish: Miami-Dade County

Fees & Taxes

Tax Annual Amount: 10233

Tax Year: 2022

Tax Legal Description: THE PLAZA 851 BRICKELL CONDO
UNIT 2211 UNDIV 0.249152% INT IN COMMON ELEMENTS
OFF REC 26287-0123

Association Fee: 1404

Association Fee Frequency: Monthly

Association Fee Includes: Hot
Water,Other

Miscellaneous

Public Survey Township: 1

**Public
Survey
Section:** 38

Syndication Remarks: BEAUTIFUL UNIT FOR SALE!! 2 beds, 2.5 baths Corner
unit, Bay View, close distance to banks, supermarket, restaurants and much more.

**Year Built
Details:**
Resale

Virtual Tour URL: <https://www.propertypanorama.com/instaview/mia/A11483536>

Courtesy of

Office Name: Compass Florida, LLC.

