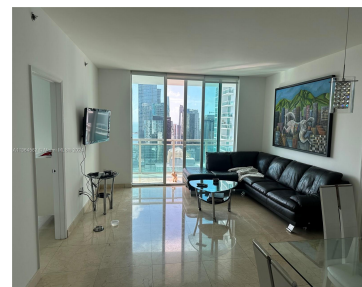


# 950 BRICKELL BAY DR 3505 MIAMI FL 33131

<https://www.cays.com>



\$960,000

STUNNING CONDO 2/2 W/ AMAZING BAY & SKYLINE VIEWS FROM THE 35TH FLOOR. COMPLETED IN 2009, THE PLAZA ON BRICKELL IS A STYLISH, MIX-USE PROJECT W/ A UNIQUE URBAN PLAZA & SPECTACULAR BAY & CITY VIEWS. LOCATED IN THE HEART OF BRICKELL, THE PLAZA OFFERS A DYNAMIC LIFESTYLE FEATURING: DOWNTOWN STYLE LIVING, IMMEDIATE ACCESS TO [...]

- 2 beds
- 2 baths
- Condominium
- Residential
- Active
- 1101 sq ft

## Basics

**Bathrooms Full:** 2

**Category:** Residential

**Status:** Active

**Bathrooms:** 2 baths

**Year built:** 2008

**Lot Size Units:** Square Feet

**Type:** Condominium

**Bedrooms:** 2 beds

**Area:** 1101 sq ft



---

## Property details

**Total Building Area:** 1101

**Disclosures:** Owner Is Listing Agent

**Subdivision Name:** THE PLAZA 851 BRICKELL CO

**Parcel Number:** 01-41-38-146-2740

**Possession:** Close Of Escrow

---

## Property Features

**Exterior Features:** Balcony

**Interior Features:** Bedroom on Main Level,First Floor Entry,Handicap Access,Split Bedrooms,Walk-In Closet(s),Elevator

**Pool Features:** Association

**Parking Features:** Assigned,One Space,Garage Door Opener

**Security Features:** Fire Alarm,Secured Garage/Parking,Key Card Entry,Fire Sprinkler System,Smoke Detector(s)

**Appliances:** Dryer,Dishwasher,Refrigerator,Trash Compactor,Washer

**Architectural Style:** High Rise

**Association Amenities:** Pool,Sauna,Elevator(s)

**Construction Materials:** Block

**Cooling:** Central Air

**Cooling Y/N:** 1

**Covered Spaces:** 1

**Flooring:** Marble

**Garage Spaces:** 1

**Garage Y/N:** 1

**Heating:** Electric

**Heating Y/N:** 1

**Pets Allowed:** Size Limit,Yes

**View:** Bay

**View Y/N:** 1

**Entry Level:** 35

**Entry Location:** 35

**Patio and Porch Features:** Balcony,Open

**Stories Total:** 54

---

## Rooms & Units Description

**Unit Number:** 3505



---

## Location Details

**County Or Parish:** Miami-Dade County

**Directions:** Exit 2A from I95.BEHIND BRICKELL AVE ON BRICKELL BAY DR AND 9TH STREET.

---

## Fees & Taxes

**Tax Annual Amount:** 6999

**Tax Year:** 2022

**Tax Legal Description:** THE PLAZA 851 BRICKELL CONDO UNIT 3505 UNDIV 0.214644% INT IN COMMON ELEMENTS OFF REC 26287-0123

**Association Fee:** 1000

**Association Fee Frequency:** Monthly

**Association Fee Includes:** Amenities,Cable TV,Hot Water,Internet,Security,Trash,Water

---

## Miscellaneous

**Public Survey Township:** 1

**Public Survey Section:** 38

**Syndication Remarks:** Submit all offers via MLS Offers

**Year Built Details:** New Construction

**Virtual Tour URL:**

<https://www.propertypanorama.com/instaview/mia/A11364582>

---

## Courtesy of

**Office Name:** Bayview International Realty

