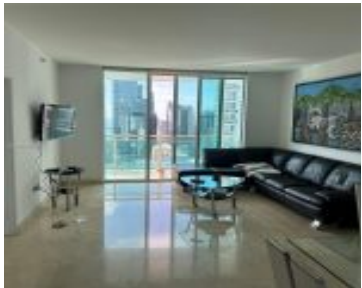


# 950 BRICKELL BAY DR MIAMI FL 33131 950 BRICKELL BAY DR 3505

<https://www.cays.com>



\$960,000



THE PLAZA 851 BRICKELL CONDO UNIT 3505 UNDIV 0.214644% INT IN COMMON ELEMENTS OFF REC 26287-0123 STUNNING CONDO 2/2 W/ AMAZING BAY & SKYLINE VIEWS FROM THE 35TH FLOOR. COMPLETED IN 2009, THE PLAZA ON BRICKELL IS A STYLISH, MIX-USE PROJECT W/ A UNIQUE URBAN PLAZA & SPECTACULAR BAY & CITY VIEWS. LOCATED IN THE [...]

- 2 beds
- 2, 2 baths
- Condominium, Residential
- Condominium, Residential
- Active
- 1101 sq ft

## Basics



**Category:** Condominium, Residential

**Status:** Active

**Bathrooms:** 2, 2 baths

**Floors:** 54 floors

**Year built:** 2008

**Subdivision Name:** THE PLAZA 851 BRICKELL CO

**Type:** Condominium, Residential

**Bedrooms:** 2 beds

**Half baths:** 0 half baths

**Area:** 1101 sq ft

**View:** Bay

**County:** Miami-Dade

---

## Property details

**Subdivision Name:** THE PLAZA 851 BRICKELL CO

**Parcel Number:** 33131

---

## Property Features

**Parking Features:** Assigned,OneSpace,GarageDoorOpener

**Cooling Y/N:** 1

**Heating:** Electric

**Pets Allowed:** SizeLimit,Yes

**View Y/N:** 1

**Cooling:** CentralAir

**Garage Y/N:** 1

**Heating Y/N:** 1

**View:** Bay

**Stories Total:** 54

---

## Rooms & Units Description

**Unit Number:** 3505

---

## Location Details

**County Or Parish:** Miami-Dade

**Directions:** Exit 2A from I95.BEHIND BRICKELL AVE ON BRICKELL BAY DR AND 9TH STREET.

---

## Building Details



**Architectural Style:** HighRise

**Construction Materials:** Block

**Covered Spaces:** 1

**Garage Spaces:** 1

**Floor covering:** Marble

---

## Amenities & Features

**Pool Features:** Association

**Security Features:**

FireAlarm,SecuredGarageParking,KeyCardEntry,FireSprinklerSystem,SmokeDetectors

**Association Amenities:** Pool,Sauna,Elevators

**Exterior Features:** Balcony

**Interior Features:**

BedroomOnMainLevel,FirstFloorEntry,HandicapAccess,SplitBedrooms,WalkInClosets,Elevator

**Parking Features:**

Assigned,OneSpace,GarageDoorOpener

**Patio & Porch Features:** Balcony,Open

**Cooling:** CentralAir

**Heating:** Electric

**Appliances:**

Dryer,Dishwasher,Refrigerator,TrashCompactor,Washer

---

## Expenses, Fees & Taxes

**Association Fee:** \$1,000

**Tax Annual Amount:** \$6,999

**Tax Year:** 2022

---

## Fees & Taxes

**Association Fee:** 1000

---

## Miscellaneous

**Association Fee Frequency:** Monthly **List Office Name:** Bayview International Realty

**Listing Terms:** Conventional

---

## Miscellaneous

**Above Grade**

**Virtual Tour URL:**

**Finished Area:** <https://www.propertypanorama.com/instaview/mia/A11364582>

Miami, FL



---

# Courtesy of

**Office Name:** Bayview International Realty

